

Recessed Steel TV Box™

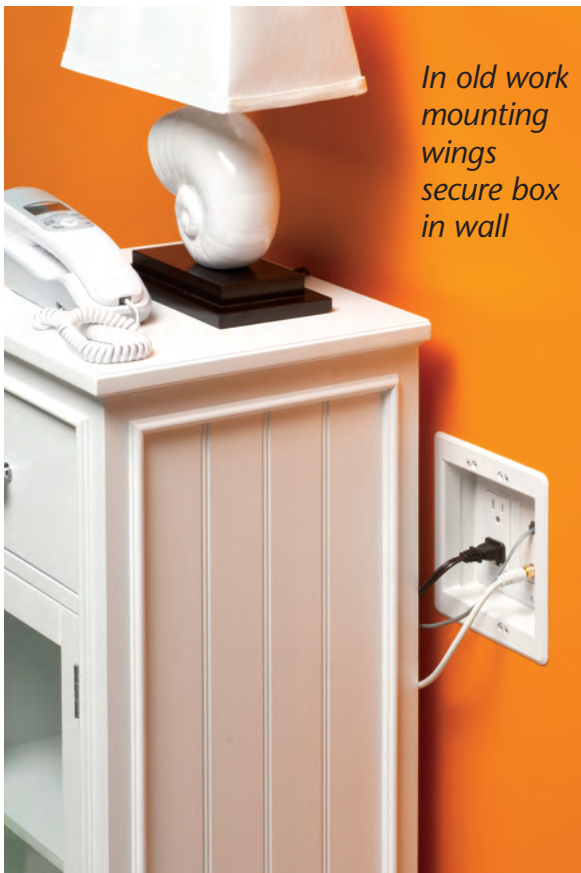
NEW!
more on
reverse

For flush-to-wall placement of TVs, furniture, appliances



**4-GANG
TVBS613**
Steel combination
power/low voltage box

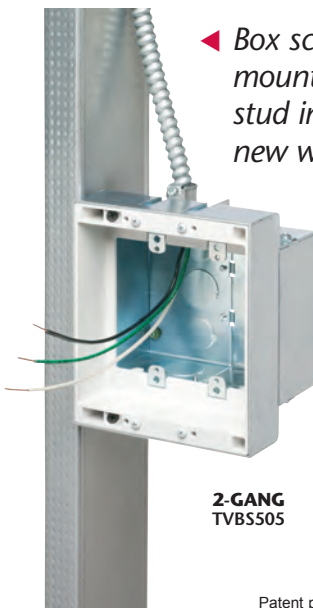
Plugs/connections stay inside recessed box in new or old work



*In old work
mounting
wings
secure box
in wall*



*Box screw-
mounts to
stud in
new work*




**2-GANG
TVBS505**

Patent pending

Arlington's recessed STEEL combination power and low voltage TV BOX™ is the best way to mount flat screen TVs flush against a wall. It's also great for hotel and other settings where furniture and/or appliances need to be pushed close to the wall.

Plugs and connectors stay inside the box, without extending past the wall.

Designed for use in commercial construction where metal raceway is used, Steel TV BOX provides power and/or low voltage in one or more of the openings. TV BOX is available in 2-, 3- and 4-gang styles. We have a box for almost any new or old work application!

- Steel box with non-metallic paintable white or black trim plate
- Easy to install, secure installation
- Mounting wings on two- and three-gang styles hold boxes securely against the wall in retrofit projects
- Boxes screw-mount to stud in new construction
- Optional covers for unused boxes
- UL Listed 



Scan QR code for more info.



Arlington

1 Stauffer Industrial Park
Scranton, PA 18517
800/233.4717
Fax 570/562.0646
www.aifittings.com

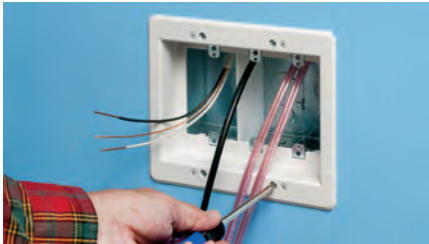
Recessed Steel TV Box™

Power/low voltage combination box for use with steel raceway

OLD WORK - Three-gang TVBS507 shown



1 Cut hole using enclosure, without trim plate, as a template. (Mounting wings hold box in wall.)



2 Pull cable. Insert box in hole. Tighten mounting wing screws to hold box securely against wall.

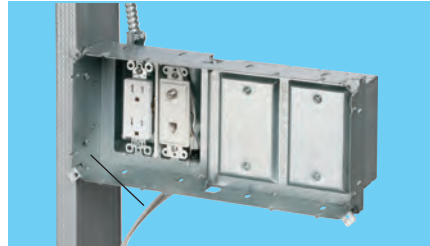


3 Install voltage separator for power and low voltage.



4 Install devices, then the wall plates.

NEW CONSTRUCTION - Four-gang TVBS613 shown



1 Attach box to steel stud using #6 screws. Pull wires.



2 Or attach to a wood stud using #6 screws. Pull wires.



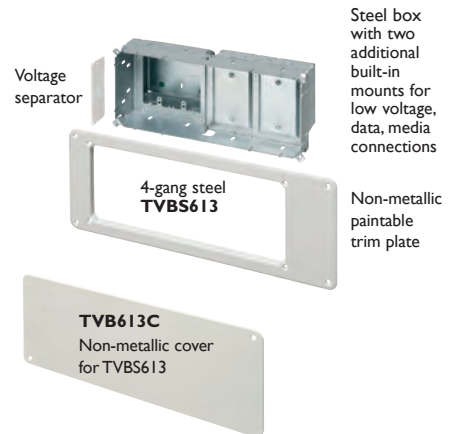
3 After drywall is installed, add trim plate, then install enclosure assembly to the wall with outer screws.



4 Install voltage separator.

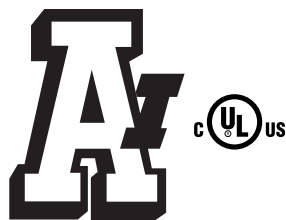


5 Install devices and plates.



CATALOG NUMBER	UPC/DCI/NAED MFG #01 8997	DESCRIPTION	UNIT PKG	STD PKG
TVBS505	37955	Two-gang steel box w/ white non-metallic trim plate	1	1
TVBS507	37956	Three-gang steel box w/ white non-metallic trim plate	1	1
TVBS613	09633	Four-gang steel box with white non-metallic trim plate	1	1
TVBS613BL	09660	Four-gang steel box with black non-metallic trim plate	1	1
TVB613C	09631	Non-metallic, blank cover for TVBS613	1	1

NEW



Arlington

1 Stauffer Industrial Park
Scranton, PA 18517

800/233.4717

Fax 570/562.0646

www.aifittings.com

Patent pending
Steel TV BOX 0511/25M

NEW

2-gang TVBS505



Voltage separator

Scan QR code for more info.



Distributed by