



SUMMER 2015 POCKET GUIDE



CONNECTING IDEAS



AKG

AMX



dbx

DigitTech



lexicon

Martin

Soundcraft

STUDER

NETWORK MEDIA

NEW SVSI FAMILY

VISION²

INSPIRED SIGNAGE

WORKSPACE & COLLABORATION

NEW AMX ROOMBOOK

NEW ENZO

SERENO

ALERO

HYBRID SWITCHING & CONTROL

ENOVA DVX

ENOVA DGX

ENOVA DVX COMPARISON

ENOVA DGX COMPARISON

NEW NETLINX NX SERIES

DXLINK

SOLECIS

EPICA FIBER

ICSLAN

PDU

USER INTERFACES

NEW MODERO 10" RETRACTABLE

NEW HYDRAPORT TOUCH

MODERO X SERIES

NEW HYDRAPORT CONNECTION

MODERO S SERIES

MASSIO

MODERO COMPARISON

MODERO MOUNTING OPTIONS

SOFTWARE

NEW RPM

RMS

RESOURCES

SALES CONTACTS & SHOWROOMS

NEW HARMAN PROFESSIONAL SERVICES

INDUSTRY PARTNERS

TPCONTROL

LUTRON



© 2015 AMX by HARMAN. All rights reserved. AMX does not assume responsibility for errors or omissions.

Alero, AMX, CatPro, ClearConnect, DXLink, Enova, Enzo, Epica, HydraPort, InspiredSignage, InConcert, InstaGate Pro, Massio, Metreau, Mio Modero, Modero X Series, Modero S Series, NetLinX NX, Network Media, Precise, Rapid Project Maker, Resource Management Suite, RMS, RMS Enterprise, Sereno, SmartScale, SmoothTouch, SVSI, Vision2, XPort, XPort and XPress and any other brand name referenced in this guide are trademarks/registered trademarks of AMX by HARMAN.

AIA, Android, Apple, Apple iPad (Phone and Pod), Aston Martin, Bang & Olufsen, Benq, BICSI, Bowers & Wilkins, Canon, Casio, CEDIA, CEA, Chief, Christie, Cisco, Commercial Integrator, DENT PowerScout, Digital Signage Association, EH Publishing, Epson, Field Server Technologies, Google, HBA, Hitachi, ICEpower, InfoComm, Integrated Systems Europe, Kensington, KMX, Lutron, Lutron Clear Connect, Mercedes-Benz, Microsoft, Microsoft Exchange, Microsoft Office 365, Microsoft Windows 8, XP and Vista, Mitsubishi, NAB, NAHB, NEG, NSCA, Panasonic, Parks Associates, RAVE Publications, RedMere Technology, Roku, Sony, Tridium, Touch Panel Control, TPCControl, USBCC and Zyxel and any other company or brand name referenced in this guide are trademarks/registered trademarks of their respective companies.

The product specifications/information provided specific to these designated products are not confirmed as of 06/15/15 and are subject to change. The information included is solely intended as a basis for comparison and forecasting. AMX reserves the right to change said product specifications without prior notification.

NEW

NETWORKED AV




Any Source, Anywhere, Anytime

Imagine an enterprise AV solution with a variety of networked products from AMX that are flexible, easy to deploy and truly expandable. That dream is now a reality with the new SVSI family of products from AMX. The newest AMX network media product family includes AV over IP video encoders, decoders, audio transceiver, network video recorders, IP windowing/wall processors, and video management systems, as well as video over IP application system solutions. The SVSI networked AV products are easy to install and use. They support point-to-multipoint streaming and distributed matrix switching for small/large and symmetric/asymmetric configurations. It's as simple as knowing how many sources you want to distribute over the network and where you want to distribute them.

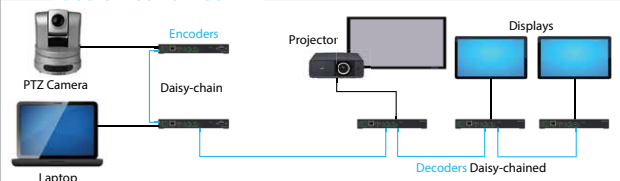
Because the SVSI AV over IP encoder/decoder products use standard network cabling and IP technology to distribute source content to your endpoint components, distributing AV over your network is a breeze.

The SVSI video management products manage all the SVSI devices within the distributed media system and create a complete digital media distribution solution from each source to every display. The flexible user interface includes access from your desktop/laptop, iPad, iPhone or Android device.

THE SVSI PRODUCT LINE UP

- **N1000 SERIES – MINIMAL PROPRIETARY COMPRESSION**
 - Distribution within a room or single switch
 - Keyboard and Mouse Control
- **N2000 SERIES – VIDEO OVER IP**
 - Digital Cinema Grade
 - Keyboard and Mouse Control
 - 4K Ultra HD/JPEG 2000 Compression
 - 4K Ultra HD/Uncompressed
- **N3000 SERIES – h.264 VIDEO**
 - Distribution across a WAN to dedicated decoders or desktop/mobile devices
- **AUDIO OVER IP TRANSCIVER**
- **2 WINDOWING/WALL PROCESSORS**
- **NETWORK VIDEO RECORDER**
- **VIDEO MANAGEMENT & CONTROL SOFTWARE TOOLS**
- **AND MORE**

Basic Networked AV



The typical networked AV system can be added to an existing network or built as a separate system using standard layer three switches. With the SVSI products, your system is scalable and will grow as your needs grow. When you need to expand your system with sources or displays, simply add an encoder or decoder depending upon your additional needs – it's that simple!

ENCODERS & DECODERS

NEW

N1000 SERIES

NETWORKED AV Any Source, Anywhere, Anytime

The SVSI N-Series products offer a full range of AV over IP encoders and decoders optimized for delivering the ultimate performance and flexibility at the right price.

This affordable local AV over IP switching solution packetizes video into a standard IP format to create anywhere from a small 2x1 seamless presentation switcher up to a large 32x32 matrix switcher using off-the-shelf layer-3 network switches.

Each video stream bandwidth is fixed at 880-Mbps and must home-run to gigabit switches, but can use the built-in multicast routing feature of layer-3 switches to prevent overloading of any port or network segment. The new MPC (Minimal Proprietary Compression) N1000 Series provides users with a variety of connectivity options including two RJ45 network ports (one PoE) as well as a version that offers SFP fiber/RJ45 copper network ports, with USB control inputs for KVM-over-IP keyboard and mouse operation. All MPC N1000 Series includes input and output scaling, serial, balanced audio, and HDMI video connection.

SVSI N1000 Series Encoders

NEW



NMX-ENC-N1122 | N1122 MPC 1080p60 POE ENCODER

NEW



NMX-ENC-N1133 | N1133 MPC 1080p60 POE / SFP WITH USB ENCODER

SVSI N1000 Series Decoders

NEW



NMX-DEC-N1222 | N1222 MPC 1080p60 POE DECODER

NEW



NMX-DEC-N1233 | N1233 MPC 1080p60 POE / SFP WITH USB DECODER

ENCODERS & DECODERS

N2000 SERIES

NETWORKED AV Any Source, Anywhere, Anytime

The SVSI N-Series products offer a full range of AV over IP encoders and decoders optimized for delivering the ultimate performance and flexibility at the right price.

Digital Cinema Grade – This encoder/decoder set utilizes JPEG 2000 compression technology for applications when video quality is top priority. Users can control video quality and bandwidth usage with a simple slider control provided in the web-based user interface allowing each installation to be customized for maximum performance.

Low-Latency – These products provide low latency for 1080p/60hz encoding and decoding. With the ability to direct any source stream to any display, large, low-cost switching and distribution systems are simple to deploy without proprietary cabling or dedicated switching hardware.

SVSI N2000 Series JPEG2000 Digital Cinema Grade



NMX-ENC-N2121 | N2121 JPEG2000 DIGITAL CINEMA GRADE ENCODER
NMX-DEC-N2221 | N2221 JPEG2000 LOCAL PLAY DECODER

SVSI N2000 Series Low-Latency



NMX-ENC-N2141 | N2141 JPEG2000 1080p60 LOW LATENCY ENCODER
NMX-DEC-N2241 | N2241 JPEG2000 1080p60 LOW LATENCY DECODER

N2510 4x1 Windowing Processor (N2000 Series)



The N2510 4x1 Windowing Processor works with the N2000 Series encoders and decoders to distribute multiple real-time HD streams with no video input or output connectors – only a single network port. The 1RU rack-mount appliance connects to the video over IP network and accepts any four video streams as input. Each input can be cropped, scaled, and positioned according to stored presets (such as quad, window-in-window, 3+1, etc) or in any user-defined configuration. The combined output video stream is then routed to one or more displays at HD 1080p or CG 1600x1200 resolution. It functions as a 4x1 windowing processor and can be stacked to give 7x1, 10x1, 13x1, 16x1, or higher capability. A single connection to the network provides access to all available video streams for window selection and for output of the combined stream.

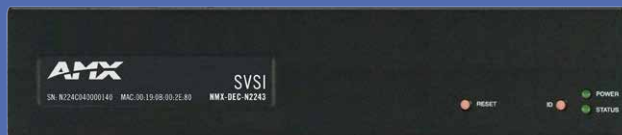
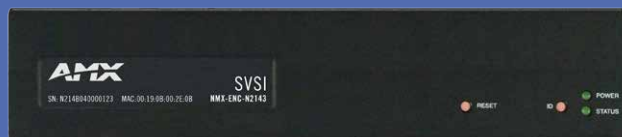
ENCODERS & DECODERS

N2000 SERIES

Keyboard and Mouse Control – This encoder/decoder set feature keyboard and mouse extension over IP, input and output scaling, embedded 7.1 audio, de-embedded balanced analog audio, and power over Ethernet.

4K Ultra HD Video over IP – This encoder/decoder set offers the only seamless switching 4K solution on the market. Whether uncompressed Ultra HD video in a 10-Gbps stream or JPEG2000 compressed video through a gigabit port, these products offer visually loss-less quality at ultra-low latency for ProAV applications. Keyboard and mouse extension are standard on our 4K products as is 7.1 digital audio, serial, and IR. All the SVSI 4K products are based on industry-standard IP protocols and can be switched and routed using standard gigabit network appliances.

SVSI N2000 Series Keyboard and Mouse Control



NMX-ENC-N2143 | N2143 JPEG2000 1080p60 LOW LATENCY WITH USB ENCODER
 NMX-DEC-N2243 | N2243 JPEG2000 1080p60 LOW LATENCY WITH USB DECODER

SVSI N2000 Series 4K Ultra HD



NMX-ENC-N2151 | N2151 JPEG2000 4K UHD WITH USB ENCODER
 NMX-DEC-N2251 | N2251 JPEG2000 4K UHD WITH USB DECODER

ENCODER & DECODER

N3000 SERIES

NETWORKED AV

Any Source, Anywhere, Anytime

The N3000 Series extends your reach to the WAN for streaming, video to desktop, digital signage, set-top boxes, or mobile device applications. Fully integrated with existing control options, the N3000 Series delivers the highest quality HD video content at the lowest bandwidth for the most demanding applications. Moving AV to or from the Cloud just became a lot easier with the N3000.

The N3000 Series' H.264 compression engine delivers low-latency 1080p60 video at half the bandwidth of comparable encoders. High profile H.264 encoders output unicast or multicast to one or more N3000 Series decoders with the same seamless switching capability as the N1000 and N2000 lines. Multiple, selectable streaming protocols (RTP, RTSP, and more) allow for software endpoints during video to desktop applications, our AMX Inspired Signage XPert and XPress players, or third-party hardware endpoints like Roku, Amino, or Google TV. Adjustable bit-rates from 32-Kbps to 10-Mbps give the highest video fidelity at the lowest bandwidths on the market in keeping with our commitment to provide unsurpassed Networked AV quality.

SVSI N3000 Series Encoder



NMX-ENC-N3121 | N3121 H.264 1080p60 ENCODER

SVSI N3000 Series Decoder



NMX-DEC-N3221 | N3221 H.264 1080p60 LOCALPLAY DECODER

NEW

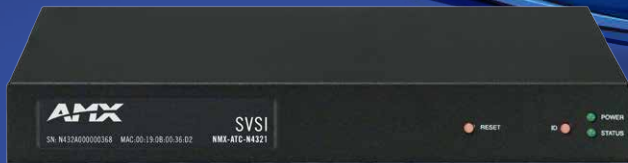
N3510 9x1 Multi-Channel Windowing Processor (N3000 Series)



The N3510 multi-channel windowing processor allows user customization of borders, text overlays, window size and positioning, backgrounds, and stores user presets for quick recovery. Although optimized to work with the SVSI N3000 series of H.264 encoders and decoders, the N3510 also accepts up to nine H.264 streams from most sources while outputting the windowed HD video stream from local viewing through its HDMI port or in streaming format to a remote hardware or software decoder.

 WINNER
BEST SHOW
 InfoComm 2015

AUDIO OVER IP TRANSCEIVER



NETWORKED AV Any Source, Anywhere, Anytime

The SVSI N4321 deploys audio over IP in an easy and cost effective way. Realize the unlimited possibilities of distributed audio over your existing LAN and WAN networks. It sends and receives two-channel balanced or unbalanced audio over IP. Simply connect a balanced audio input into the IN port and it's converted to IP packets that are switchable and routable just like data or voice. The balanced audio output receives an audio-over-IP stream and decodes to analog while preserving audio fidelity. Perfect for point-to-point or point-to-multi-point audio delivery, the N4321 provides audio matrix switching and distribution using the same control options as SVSI's Networked AV video switching and distribution solution.

With two auto-sensing gigabit Ethernet ports, units can be stacked to deliver low-latency multi-channel audio over a house network or a physically separate network. One Ethernet port is PoE for use with a PoE switch, eliminating the need for an external power

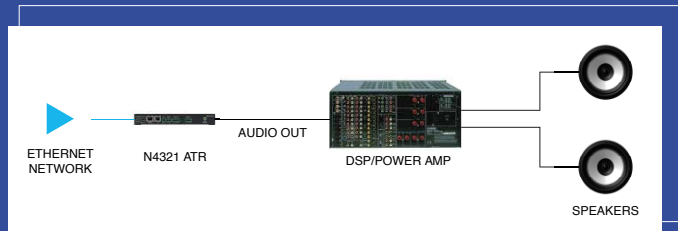
supply. An audio matrix with any number of inputs and outputs can be constructed with the N4321. Since control is the same as for SVSI's video over IP matrix, video and audio matrices can be combined and routed using the same controller for the ultimate in digital media distribution.

SVSI N4321 Audio Transceiver



NMX-ATC-4321 | N4321 2 CHANNEL AUDIO TRANSCEIVER

SVSI N4321 Application



AV OVER IP

NETWORK VIDEO RECORDER



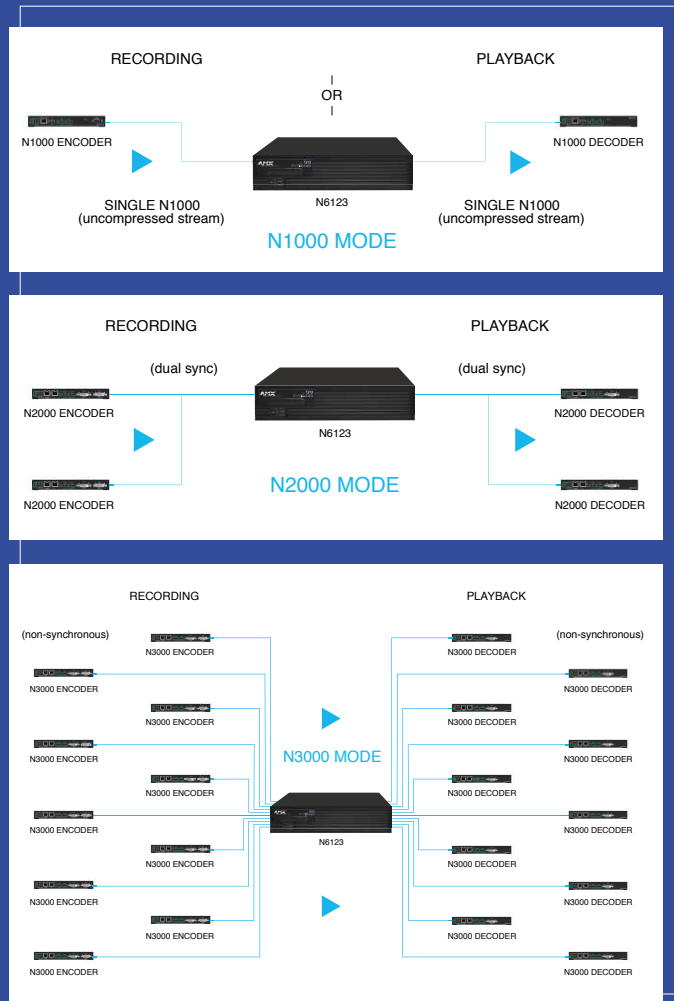
NETWORKED AV Any Source, Anywhere, Anytime

The N6123 network video recorder records hours of high-resolution, HD content over an Ethernet LAN. This rack-mount NVR is compatible with all SVSI AV over IP products and attaches to the video network at any point. The N6123 can record from any of the SVSI encoders (N1000, N2000, N3000, or V-Series) and uses any of the SVSI decoders in the same series for **playback**. Each video stream is recorded and played back at its original resolution. The 2RU form-factor is stackable for a high density of recorded video streams in a small footprint. The SVSI N-Command is used to control all of the product's features (including Time-Shift, Dual-Sync, and H.264 Conversions).

Time-Delayed Broadcast – Time-Shift mode allows a recording to be delayed from several seconds to several hours to coordinate between different venues. Recordings can be initiated at one location and playback started at a separate location. This feature is supported by the N2000 and N3000 Series only.

Multi-Channel Synchronous Recording – Dual-Sync mode records two separate video streams simultaneously at different resolutions and bit-rate and plays them back synchronously. This feature is supported by the N2000 Series only.

SVSI N6123 Applications



3 CONTROL OPTIONS

N-CONTROL SOLUTIONS

NETWORKED AV

Any Source,
Anywhere, Anytime

The SVSI product line includes a variety of control options, insuring you get the most out of your networked AV system: N-Act, N-Command, N-Touch. These products are true IP, making it easy to control any device, anywhere, anytime. In addition, N-Control supports send commands via IR, RS232, or even 12v contact closures.

N-Act | On Board Control – All SVSI N-Series encoders and decoders have on-board, built-in control capability via events that can trigger any number of TCP/UDP commands to other IP controllable devices.

- Event types are 'power on', 'video connect', and 'video disconnect'. Once any of these events occur, encoders and decoders will send out a pre-determined list of commands to any number of devices.
- Control devices such as blinds, lighting, cameras, etc through scripts and panels.

SVSI N-Command | Control Appliance – These web-based hardware controllers offer control options from 5 users/50 devices to unlimited users and devices, includes simplified ASCII interface for 3rd party control via telnet, TCP/IP, or serial. Enterprise controller offer master/slave fail-over protection, hot-swappable drives, and redundant power supplies.

- Intuitive and powerful management of equipment configuration, content management, NVR recording and playback, bandwidth utilization, and AV switching using a web-based, point-and-click graphical matrix.
- View a graphical presentation of video network connections, assign fixed IP addresses for each SVSI component, and adjust variable bit-rate for each video stream.



N-COMMAND CONTROL APPLIANCES | SC-N8001, SC-N8002, SC-N8012

N-Touch | Wallplate / Touch Panel Controllers – These controllers are stand-alone dual-gang IP controllers that send commands to multiple IP clients with the push of a button.

- Programming is through the built-in web-server with multi-page custom graphics stored internally.
- Nine Programmable tactile buttons with 240×320 display.
- Built-in Wi-Fi and Bluetooth for expanding control to mobile devices.



N-TOUCH CONTROLLERS | WALLPLATE / TOUCH PANEL

Panel Builder | Free Software – Build attractive touch-panels to control third-party equipment via serial, IP, or IR using these control ports on all of the SVSI products.

NETWORK MEDIA

H.264 ENCODERS

The On-Ramp to NETWORK MEDIA

If you have a PC, camera or set top box that you want to stream on a network, you need an encoder to convert the audio and video outputs of those sources to a format that can be streamed. The AMX H.264 Encoder offers standardized, bandwidth-efficient encoding for SD and HD sources.

- Multi-format video input for encode of analog and digital video signals
- SDI input for encoding of SD-SDI and HD-SDI
- Audio/video pass-through outputs allow you to daisy chain encoders together for low and high bandwidth streams, or to monitor your encoded source
- Encoded video can be recorded for on-demand playback
- Built-in managed Ethernet switch allows for installation of one or more encoders in a location without having to run additional Ethernet cables
- Audio level meter on front of unit makes it easy to validate that user audio is being picked up



NMX-ENC-1105 | H.264 ENCODER MULTI-FORMAT + SDI



NMX-ENC-1100 | H.264 ENCODER MULTI-FORMAT

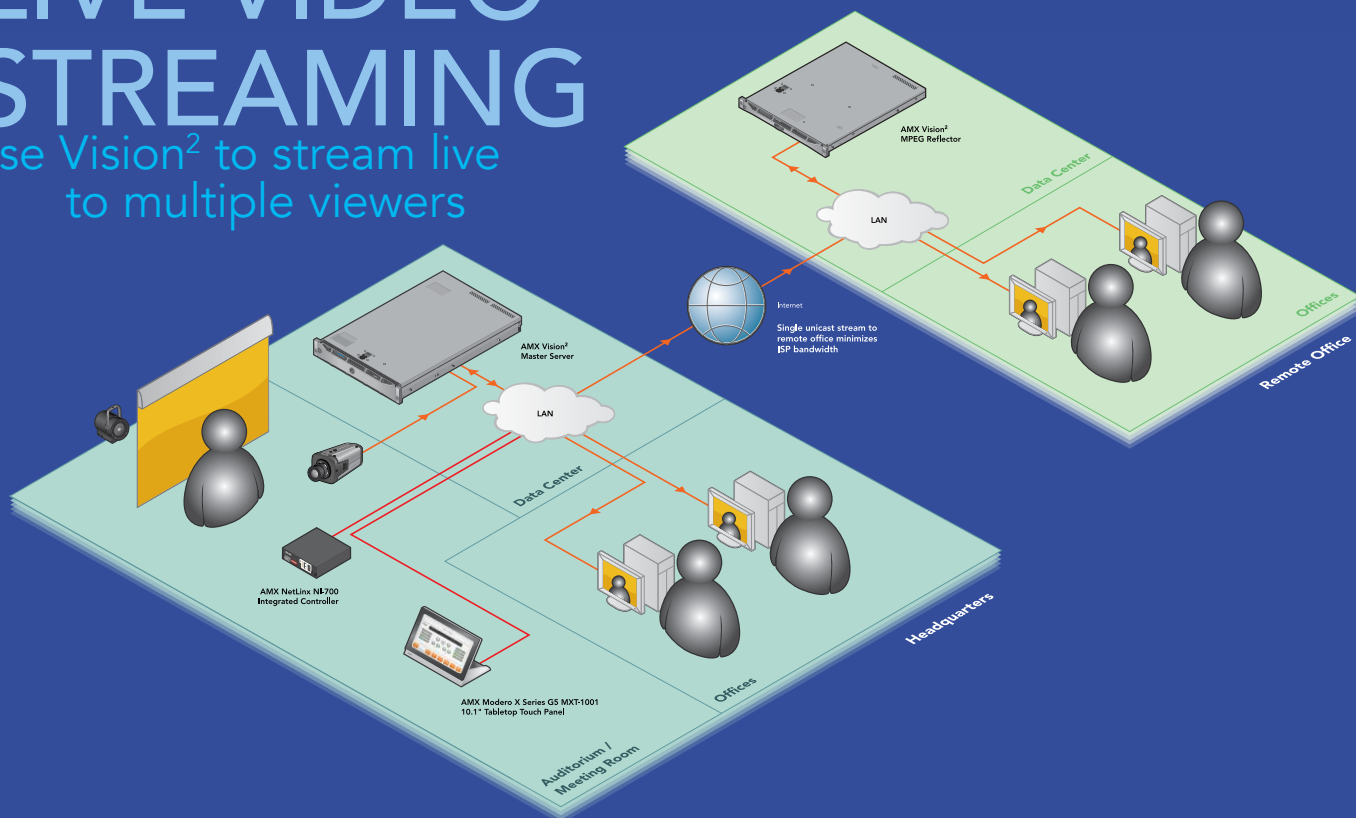
Quick Facts H.264 ENCODERS

Model	Video Inputs	Video Codec	Audio Codec	Streaming	Maximum Resolution
NMX-ENC-1100	Multi-Format	H.264 (MPEG-4 Part 10)	AAC-LC ADTS	MPEG-2 TS over UDP, RTP	1080p30
NMX-ENC-1105	Multi-Format, SDI	H.264 (MPEG-4 Part 10)	AAC-LC ADTS	MPEG-2 TS over UDP, RTP	1080p30

NETWORK MEDIA VISION²

LIVE VIDEO STREAMING

use Vision² to stream live
to multiple viewers



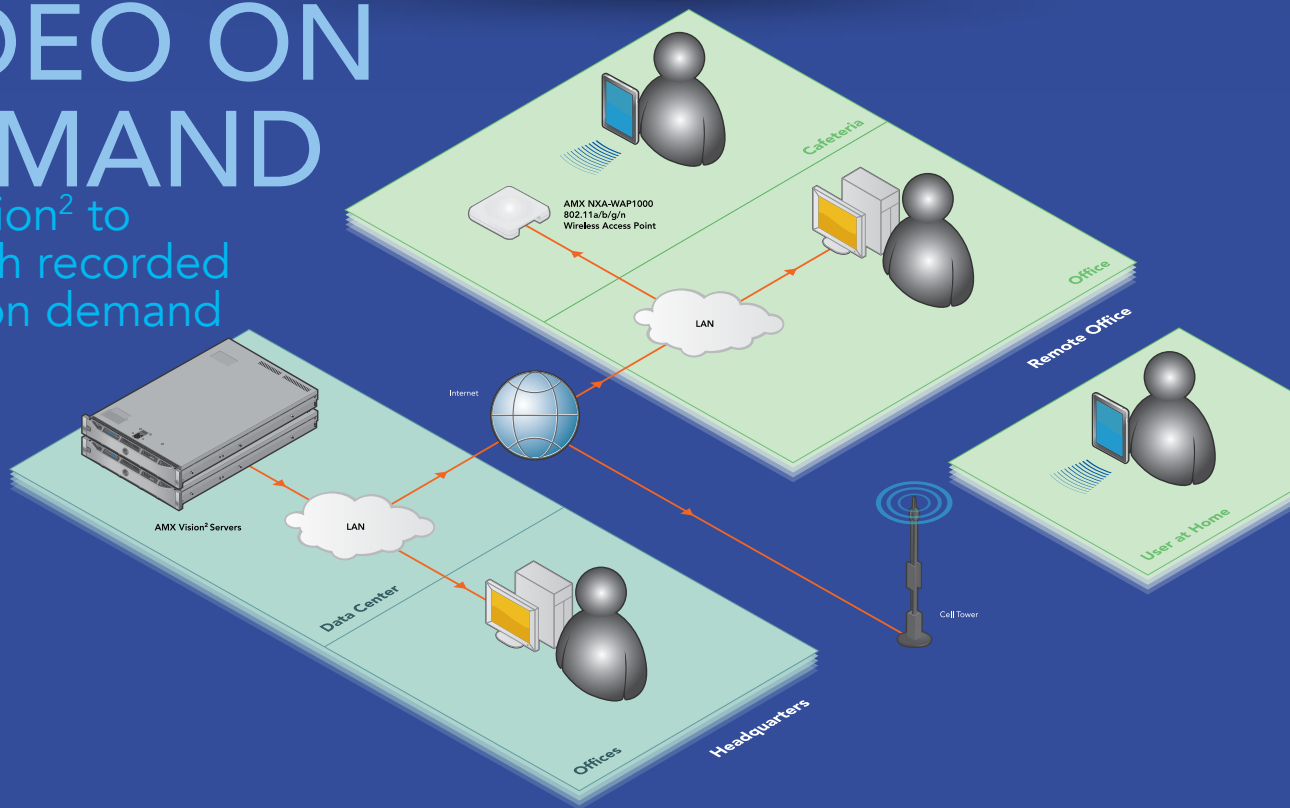
Vision² allows you to leverage your corporate infrastructure to stream live events such as all hands meetings, sales conferences or training classes to any number of destinations – while effectively managing network impact. With a simple button press, a live event can be captured and streamed to employees watching on displays in a cafeteria, PCs at a desk or on

a laptop when working remotely. As video viewing on mobile devices grows in popularity, AMX has a solution by providing a user interface that makes it simple to watch while on the go. Whether it's an iPhone, iPad or Android device, Vision² can provide a beautiful quality video that will enhance communication within an organization.

NETWORK MEDIA VISION²

VIDEO ON DEMAND

use Vision² to
watch recorded
video on demand



Vision² makes it beautifully simple to watch recorded digital videos anywhere, anytime. During the record and store process, videos can be meta-tagged with information that makes it easy to search for them later by keyword, subject or other metadata.

Global organizations can benefit from video playback as some events and activities can only take place during specific timeframes. And unique applications

can be enabled such as recording a medical procedure for review with a patient or student.

Vision² now integrates with NAS (Network Attached Storage) and SAN (Storage Area Network) to easily integrate with existing infrastructure and backup procedures, and has enhanced roles and privileges allowing ownership delegation to various groups within a corporation.

NETWORK MEDIA

INSPIRED XPert

Sophisticated Digital Signage in an Easy-To-Use Solution

Inspired XPert provides digital signage with the industry's best content tools to make creating and managing digital messages simple.

- The IS-XPT-2100 is a compact player that can be mounted behind displays and features high resolution 1080p processing power to support HD video, images, text, and internet feeds
- Addresses customer's content challenges with the availability of professionally designed, easy-to-use message templates
- Enables groups to manage their own content, while allowing a review and approval cycle before it is published to displays
- With no on-going software license fees, Inspired XPert is more cost effective than subscription-based solutions
- Supports display of internal and external data sources using XPort Data Integration Software
- NetLinX integration provides the ability to combine Inspired XPert with AMX Control systems to create messaging solutions that incorporate the entire environment
- Native integration with RMS Enterprise allows system administrators to monitor and control the signage player and its connected display device

COMPOSER SOFTWARE

- Permissions-based workflow management enables an approval process for created content
- Software installed on a user's server enables updates to content by multiple users
- Supports LDAP authentication
- Part of the Inspired XPert Management Suite



PLAYER (IS-XPT-2100)

- Generates high-res images up to 1080p at 30 frames per second
- Compact player can be mounted behind display
- NetLinX integration allows for content control from a NetLinX system



AVAILABLE TEMPLATE PAKS

- Content templates provide graphics and layouts that make it easy to simply add text and then publish



AVAILABLE CUSTOM CONTENT

- Our experienced team of graphics designers work directly with customers to develop a custom set of templates



NETWORK MEDIA

INSPIRED XPRESS



A Small Giant!

Don't let its compact size fool you. While it has no moving parts and uses a mere three watts of power the IS-SPX-1300 has an embedded web server, metric collection capability and HDMI/VGA video outputs.

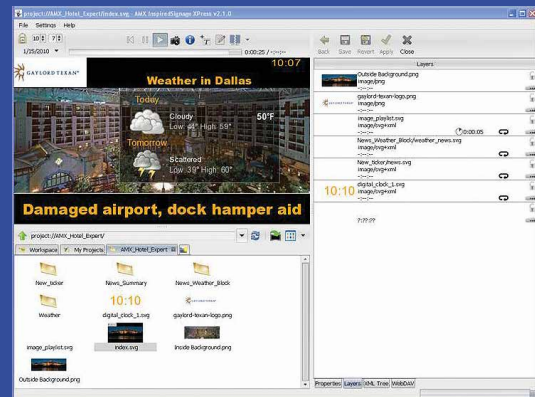
- **View Content Being Played** From the IS-SPX-1300 embedded web server an administrator can take a snapshot showing exactly what is playing on the connected display for status or reporting purposes
- **HDMI and VGA Outputs** The IS-SPX-1300 features 2 simultaneous, independent, active video output connections, one digital and one analog
- **Powerful Compact Player** This tiny player is small, light, with no moving parts, yet is packed with capabilities that most PC-based solutions can't match like live video and video wall support
- **Green** The player uses only 3 watts of power

Quick Facts IS XPRESS SPX-1300

Maximum Resolution	Video Output	Audio Codecs	Enclosure Size (HWD)
1280 x 720 (16:9), 1024 x 640 (16:10), 1024 x 768 (4:3)	720P (HD-READY), 576P, 480P, VGA; 50 OR 60 FPS	MPEG AUDIO LAYER 1/2/3, ITU G.711, G.722, G.729, PCM, MICROSOFT WMA, REAL AUDIO	1" x 6 1/4" x 3 1/4" 1 RU

A Dynamic Software Solution

Inspired XPress is ideal for delivering dynamic information to customers of retailers, hotels, banks, event venues and other public spaces in multiple languages. Content design is fluid, similar to a web page. Inspired XPress allows staff to create templates and content, and publish that content to IS XPress players.



- **Easy-To-Use** Inspired XPress software allows administrators to very easily create and manage their content and distribution.
- **Standards Based Architecture** Technology such as Scalable Vector Graphics (SVG) and XML produce graphics that are smaller, transmit more quickly, and are scalable without resolution loss.
- **Wide Variety of Graphics Supported** The design aspect of IS XPress software allows for the use of content already developed such as JPEG, PNG, GIF, and SVG for still image format and MPEG-2, MPEG-4, H.264, WMV 9 for SD motion video as well as importation of PowerPoint presentations.

NETWORK MEDIA XPORT

Now You Can XPort Your Data Exactly the Way You Want!

With XPort Data Integration Software, you can pull data from a variety of sources and distribute it to touch panels, digital signage and mobile devices. It provides an easy and secure method to manage internal and external data feeds.

- Simple intuitive software gives anyone the ability to create custom feeds
- Offers mobile friendly HTML output
- Deliver content to touch panels, digital signage and mobile devices



Touch Panels



Digital Signage



Mobile Devices

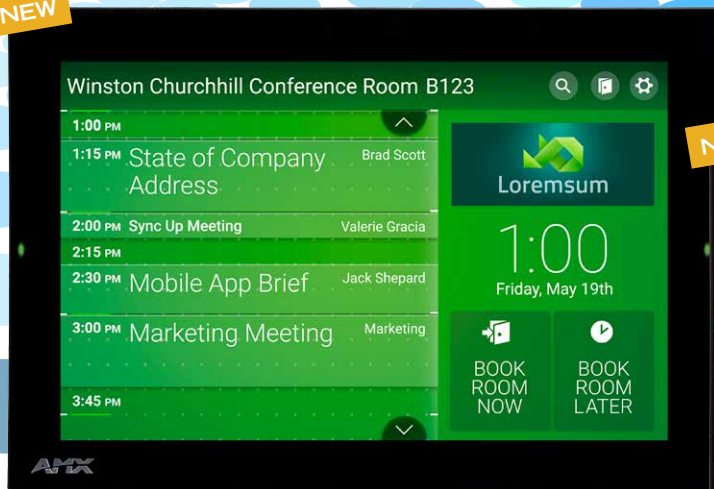


10.1" / 7"

AMX RoomBook

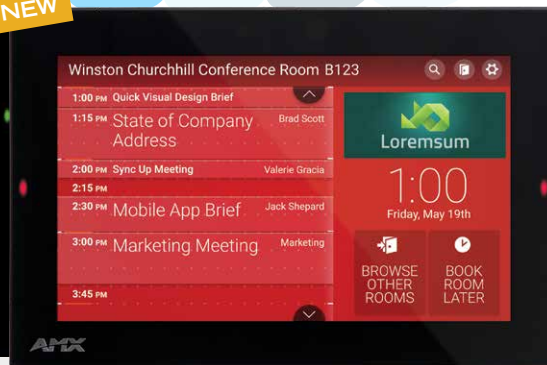
WIDESCREEN WALLS

NEW



RMBK-1001 | 10.1" WIDESCREEN

NEW



RMBK-701 | 7" WIDESCREEN

Intuitive Room Scheduling Designed for Simplicity

Imagine the convenience of viewing a meeting room's schedule and reserving the room from a touch panel mounted right outside the door. The new AMX RoomBook 10.1" and 7" Scheduling Panels include an intuitive user interface that makes it simple for users to reserve and book rooms directly from the panel. Also, they are quick and easy to install and configure: just plug in your Ethernet cable, use our easy setup wizard to integrate with your enterprise scheduling platform, and you are up and running with scheduling! Both panels include red/green room availability indicators, an intuitive and attractive user interface, and a series of reports that show usage activity for each room.

KEY FEATURES

- **Standalone Scheduling Panel Provides Room Booking, Availability, Notification and Reporting** – Reduce cost by streamlining installation, simplifying configuration, and eliminating the need for a central controller and monitoring software
- **Directly Integrates with Microsoft Exchange, Office 365, IBM/Lotus Notes and Google Calendar** – Use with the most popular scheduling platforms without additional software or configuration complications
- **Available in the Most Popular AMX Touch Panel Sizes: 10.1" and 7"** – Allows

QUICK FACTS 10.1" WIDESCREEN SCHEDULING PANEL

Wired / Wireless	Screen Ratio	Screen Resolution	Dimensions (HWD)	Scheduling Platforms	Intercom + Phone	Streaming Video
WIRED	16:9	1280 x 800	6 3/16" x 10 3/8" x 2 5/16"	MICROSOFT EXCHANGE OFFICE 365 IBM/LOTUS NOTES GOOGLE CALENDAR	NO	NO

QUICK FACTS 7" WIDESCREEN SCHEDULING PANEL

Wired / Wireless	Screen Ratio	Screen Resolution	Dimensions (HWD)	Scheduling Platforms	Intercom + Phone	Streaming Video
WIRED	16:9	1024 x 600	4 7/8" x 7 3/8" x 2 1/4"	MICROSOFT EXCHANGE OFFICE 365 IBM/LOTUS NOTES GOOGLE CALENDAR	NO	NO

users to select the optimal panel size for each room while providing all the same scheduling benefits of AMX Modero X Series and S Series Touch Panels

- **Fast & Simple Installation** – Simply mount the panel, connect your Ethernet cable and integrate with your scheduling platform using our easy setup wizard. It saves time and money, and gets your organization up and running in a matter of minutes. Currently supports the most popular Scheduling Platforms: Microsoft Exchange, Office 365, Google Calendar and IBM Notes

SCHEDULING PANEL FAMILY

OPTIONS

ORIENTATION:
LANDSCAPE

LOCATION:
WALL

EXTRAS:
CUSTOM SCHEDULING UI, SIMPLE
SCHEDULING SYSTEM INTEGRATION,
ROOM AVAILABILITY LEDS

COLOR:
BLACK



RMBK-1001



RMBK-701

modero Xseries



Modero X Series G5 Evolves With... More Power, More Functionality and More Speed

The all new Modero X Series has been significantly enhanced to include a new G5 Graphics Engine to provide faster and smoother animations and transitions for a UI that redefines simply beautiful, beautifully simple. While we were dropping a new graphics engine under the hood, we decided to quadruple the processing horsepower with a new Quad Core Processor – the fastest in the industry. It launches and runs today's applications quicker than ever and has enough processing power on tap to run even more demanding applications to come in the future.

NEW

- **Customizable Security Levels** – set your panel's security profile in accordance with your organization's requirements
- **New G5 Graphics Engine** – renders graphics faster and smoother for an even better looking user experience
- **New Quad Core Processor** – provides improved processing power to run the most demanding applications today and for years to come
- **Built-in Web Browser and Document Viewers** – conveniently simplifies accessing and presenting documents during meetings
- **More Mounting Options Including Flush Wall Mount and Secured Lectern/Table Mount** – now available in a sleek, in-wall/lectern/table mounting solution for enhanced aesthetics and theft deterrence
- **Deploy and Update Touch Panel Files** from a network URL to simplify touch panel file management

Modero X Series G4 Touch Panels Also Available

Modero X Series G4 Touch Panels are also available for purchase. Additionally, Modero X Series G4 7", 10.1", 19.4" and 20.3" Touch Panels can be upgraded with the G5 Graphics Engine by purchasing the Modero X G4 to Modero X G5 (MXA-G5-UPG) Upgrade Kit.

10.1"

moderox
WIDESCREEN RETRACTABLE

NEW



MXR-1001 | 10.1" WIDESCREEN

Out of Sight

When it comes to focusing more attention on the presenter and less on the technology managing the meeting, nothing comes close to the ultra-low profile design of Modero X Series G5 Touch Panels. The 10.1" Modero X Series G5 Retractable Touch Panel goes a step further by eliminating table clutter and completely retracting into the table to "hide away" when not being used. This full-featured Modero X Series G5 rises into place as smoothly and easily as it retracts – literally, at the touch of a button. It's the ideal solution for executive boardrooms, conference rooms and classrooms that require the power and elegance of a Modero X Series G5 but could also benefit from it being out of sight when not in use.

KEY FEATURES

- **Hideaway Touch Panel** – Saves space and ensures that sophisticated meeting rooms retain their premium styling by remaining flush with the table when closed
- **Reinforced Thin Panel** – Panel is sleek and thin, while unique hinge design

QUICK FACTS 10.1" WIDESCREEN RETRACTABLE MODERO X SERIES

Wired / Wireless	Screen Ratio	Screen Resolution	Intercom + Phone	Video Capability
WIRED	16:9	1280 x 800	YES	FULL MOTION

ensures that the panel remains sturdy when users press on it

- **Motorized & NetLinx-Controllable** – Raise or lower the panel based on room occupancy, macros, or NetLinx events
- **Standard Modero X Series G5 Technologies** – In addition to the industry's fastest G5 graphics engine and quad core processor, this panel includes all of the features that have made the Modero X Series the best control panel in the industry including integrated NFC, camera, microphone and Bluetooth

MODERO X SERIES FAMILY

OPTIONS

ORIENTATION:
LANDSCAPE

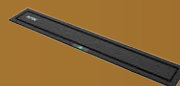
LOCATION:
TABLE

EXTRAS:
IN-TABLE RETRACTABLE, MULTI-TOUCH,
NFC-READY, BLUETOOTH SUPPORT,
720P CAMERA

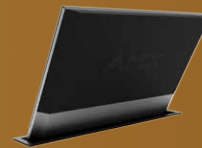
COLOR:
BLACK



MODERO X SERIES MXR-1001



MODERO X SERIES MXR-1001
(CLOSED)



MODERO X SERIES MXR-1001
(BACK VIEW)

moderOX

PANORAMIC TABLES



MODERO X SERIES 2001 | 20.3" PANORAMIC

MODERO X SERIES 1901 | 19.4" PANORAMIC

Putting an X in INNOVATION?

The unique panoramic control surface that lets the user interact with technology in a whole new way now has new features. Faster processing, simplified commissioning and enterprise touch panel file management, and built-in web browsing take multi-tasking to a whole new level. Take control of meetings with easy sophistication; control the room, surf the web, preview video and more on the touch panel with a edge-to-edge glass, capacitive, multi-touch control surface.

KEY FEATURES

- **New Graphics Engine and the Fastest Processor in the Industry** – Fast, smooth animations and transitions with the power to run applications today and for years to come
- **Remote Updates to Touch Panel Files** – Deploy and update touch panel files from a network URL
- **Secure & Customize with Authentication** – Modero X Series Touch Panels support Near Field Communications (NFC). NFC enables an end user to quickly authenticate to the touch panel with an NFC-capable device such as a mobile phone or keycard,

QUICK FACTS 20.3" PANORAMIC TABLE MODERO X SERIES

Wired / Wireless	Screen Ratio	Screen Resolution	Dimensions (HWD)	Intercom + Phone	Video Capability	Memory + Storage	ENERGY SAVINGS
WIRED	12:5	1920 x 800	9 3/16" x 20 3/8" x 5 7/8"	YES	FULL MOTION	SDRAM: 2 GB FLASH: 16 GB	85%**

*See AMX.com for other 20.3" Widescreen Modero X Series model dimensions and all metric dimensions
**Energy savings is an estimated value based on integration of RMS and Smart Programming

QUICK FACTS 19.4" PANORAMIC TABLE MODERO X SERIES

Wired / Wireless	Screen Ratio	Screen Resolution	Dimensions (HWD)	Intercom + Phone	Video Capability	Memory + Storage	ENERGY SAVINGS
WIRED	18:5	1920 x 530	7" x 20 3/8" x 5 5/16"	YES	FULL MOTION	SDRAM: 2 GB FLASH: 16 GB	85%**

*See AMX.com for other 19.4" Widescreen Modero X Series model dimensions and all metric dimensions
**Energy savings is an estimated value based on integration of RMS and Smart Programming

which promotes a higher level of user experience

- **Video and Audio Conferences at the Touch of a Button** – Collaboration has never been more important and Modero X Series Touch Panels get your meeting started right away with an intuitive user interface. With full featured VoIP (Voice over Internet Protocol) support, Modero X reduces the need for multiple devices on the table that clutter the space
- **New Mounting Options** – Secured table mounts provide an added layer of theft deterrence

MODERO X SERIES FAMILY

OPTIONS

ORIENTATION:
LANDSCAPE

LOCATION:
TABLE

EXTRAS:
MULTI-TOUCH, LIGHT/MOTION SENSOR,
INTEGRATED CAMERA, SPEAKERS/MIC,
BLUETOOTH SUPPORT, NFC-READY

COLOR:
BLACK



20.3" & 19.4" PANORAMIC TABLE



MODERO X SERIES BLUETOOTH HANDSET
IN CHARGING STATION



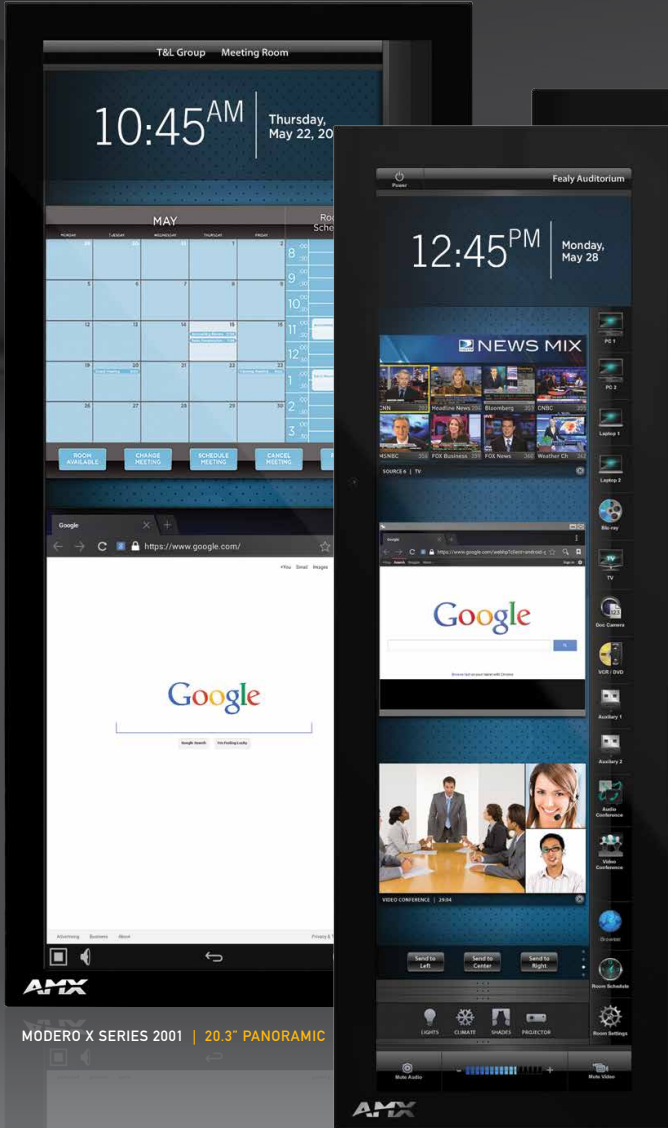
20.3" & 19.4" SECURE TABLE
MOUNTING KITS

MODERO TOUCH PANELS 20.3" / 19.4"



moderOX

PANORAMIC WALLS



MODERO X SERIES 1901 | 19.4" PANORAMIC

QUICK FACTS 20.3" PANORAMIC WALL MODERO X SERIES

Wired / Wireless	Screen Ratio	Screen Resolution	Dimensions (HWD)	Intercom + Phone	Video Capability	Memory + Storage	ENERGY SAVINGS
WIRED	12:5 (LANDSCAPE)	1920 x 800 (LANDSCAPE)	9 1/2" x 20 3/8" x 11/16" (LANDSCAPE)	YES	FULL MOTION	SDRAM: 2 GB FLASH: 16 GB	85%**
	5:12 (PORTRAIT)	800 x 1920 (PORTRAIT)	20 3/8" x 9 1/2" x 11/16" (PORTRAIT)				

**Energy savings is an estimated value based on integration of RMS and Smart Programming

QUICK FACTS 19.4" PANORAMIC WALL MODERO X SERIES

Wired / Wireless	Screen Ratio	Screen Resolution	Dimensions (HWD)	Intercom + Phone	Video Capability	Memory + Storage	ENERGY SAVINGS
WIRED	18:5 (LANDSCAPE)	1920 x 530 (LANDSCAPE)	6 7/8" x 20 3/8" x 11/16" (LANDSCAPE)	YES	FULL MOTION	SDRAM: 2 GB FLASH: 16 GB	85%**
	5:18 (PORTRAIT)	530 x 1920 (PORTRAIT)	20 3/8" x 6 7/8" x 11/16" (PORTRAIT)				

**Energy savings is an estimated value based on integration of RMS and Smart Programming

MODERO X SERIES FAMILY

OPTIONS

ORIENTATION:
PORTRAIT AND LANDSCAPE

LOCATION:
WALL

EXTRAS:
MULTI-TOUCH, LIGHT/MOTION SENSOR,
INTEGRATED CAMERA, SPEAKERS/MIC,
BLUETOOTH SUPPORT, NFC-READY

COLOR:
BLACK



20.3" & 19.4" PANORAMIC WALL



20.3" & 19.4" PANORAMIC WALL



20.3" & 19.4" FLUSH MOUNT KITS

10.1" / 7"

moderOX

WIDESCREEN TABLETOPS



MODERO X SERIES 1001 | 10.1" WIDESCREEN

MODERO X SERIES 701 | 7" WIDESCREEN

The Perfect Complement

The 7" and 10.1" Modero X Tabletop Touch Panels offer the same powerful graphics engine, industry leading processor speed and enhanced capabilities of the larger panels. Ideal for a second means of control in large spaces or the primary control interface in smaller spaces, these touch panels round out the Modero X Series Family.

KEY FEATURES

- **Elegant Design, Simple Beauty** – With a long, low profile, edge-to-edge glass and capacitive touch, Modero X Series Touch Panels offer a control surface that is unobtrusive and simple to use
- **Amazingly Flexible** – Control meeting technology, preview content, run applications and communicate; all from a single panel that gives users full command over the meeting space
- **Rapid Project Maker (RPM) Compatible** – Allows rooms to be installed and programmed using RPM, a quick and easy, wizard-based installation tool

QUICK FACTS 10.1" WIDESCREEN MODERO X SERIES

Wired / Wireless	Screen Ratio	Screen Resolution	Dimensions (HWD)	Intercom + Phone	Video Capability	Memory + Storage	ENERGY SAVINGS
WIRED	16:9	1280 x 800	6 7/8" x 9 7/8" x 4 7/8"	YES	FULL MOTION	SDRAM: 2 GB FLASH: 16 GB	82%**

**Energy savings is an estimated value based on integration of RMS and Smart Programming

QUICK FACTS 7" WIDESCREEN MODERO X SERIES

Wired / Wireless	Screen Ratio	Screen Resolution	Dimensions (HWD)	Intercom + Phone	Video Capability	Memory + Storage	ENERGY SAVINGS
WIRED	16:9	1024 x 600	5" x 7 5/16" x 4 1/8"	YES	FULL MOTION	SDRAM: 2 GB FLASH: 16 GB	82%**

**Energy savings is an estimated value based on integration of RMS and Smart Programming

MODERO X SERIES FAMILY

OPTIONS

ORIENTATION:

LANDSCAPE

LOCATION:

TABLE

EXTRAS:

MULTI-TOUCH, LIGHT/MOTION SENSOR, PoE ENABLED, BLUETOOTH SUPPORT, NFC-READY

COLOR:

BLACK



MODERO X SERIES 1001



MODERO X SERIES 701

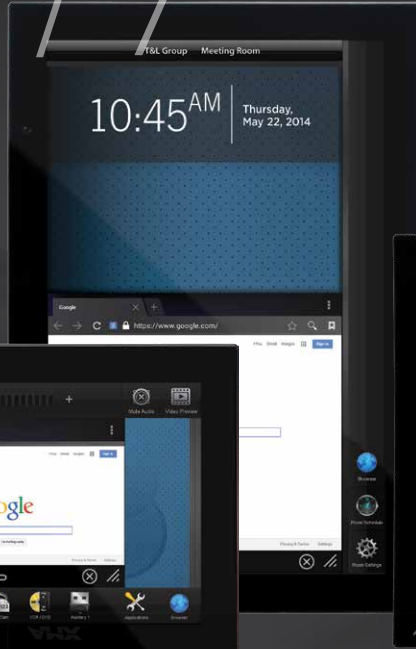
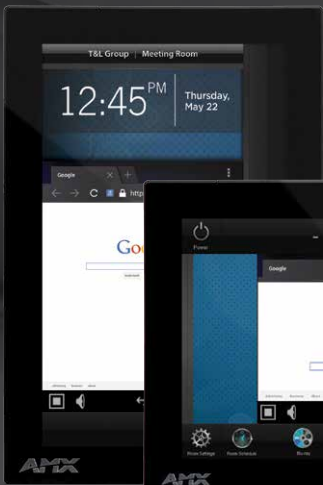


10.1" & 7" SECURE TABLE KITS

10.1" / 7"

moderox

WIDESCREEN WALLS



MODERO X SERIES 701 | 7" WIDESCREEN

MODERO X SERIES 1001 | 10.1" WIDESCREEN

Right at Home, Even in the Boardroom

The 7" and 10.1" Widescreen Modero X Series Touch Panels are available in landscape and portrait. Ideal for any control application including residential, education and commercial; whether controlling the whole-home or displaying scheduling outside a conference space the Modero X does it with brilliant graphics and a lightning fast processor.

KEY FEATURES

- **Scheduling & Signage** – Schedule meetings and view signage outside any room from this elegant panel
- **Gorgeous Mounting** – The flush-mounting option gives you that smooth-surface experience that modern interior designers crave
- **Rapid Project Maker (RPM) Compatible** – Allows rooms to be installed and programmed using RPM, a quick and easy, wizard-based installation tool

QUICK FACTS 10.1" WIDESCREEN MODERO X SERIES

Wired / Wireless	Screen Ratio	Screen Resolution	Dimensions (HWD)	Intercom + Phone	Video Capability	Memory + Storage	ENERGY SAVINGS
WIRED	16:9 (LANDSCAPE)	1280 x 800 (LANDSCAPE)	6 11/16" x 9 7/8" x 2 5/8" (LANDSCAPE)	YES	FULL MOTION	SDRAM: 2 GB	82% **
	9:16 (PORTRAIT)	800 x 1280 (PORTRAIT)	9 7/8" x 6 11/16" x 2 5/8" (PORTRAIT)			FLASH: 16 GB	

**Energy savings is an estimated value based on integration of RMS and Smart Programming

QUICK FACTS 7" WIDESCREEN MODERO X SERIES

Wired / Wireless	Screen Ratio	Screen Resolution	Dimensions (HWD)	Intercom + Phone	Video Capability	Memory + Storage	ENERGY SAVINGS
WIRED	16:9 (LANDSCAPE)	1024 x 600 (LANDSCAPE)	4 13/16" x 7 5/16" x 2 1/2" (LANDSCAPE)	YES	FULL MOTION	SDRAM: 2 GB	82% **
	9:16 (PORTRAIT)	600 x 1024 (PORTRAIT)	7 5/16" x 4 13/16" x 2 1/2" (PORTRAIT)			FLASH: 16 GB	

**Energy savings is an estimated value based on integration of RMS and Smart Programming

MODERO X SERIES FAMILY

OPTIONS

ORIENTATION:
PORTRAIT AND LANDSCAPE

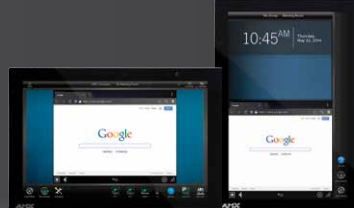
LOCATION:
WALL

EXTRAS:
MULTI-TOUCH, LIGHT/MOTION SENSOR,
INTEGRATED CAMERA, SPEAKERS/MIC,
BLUETOOTH SUPPORT, NFC-READY

COLOR:
BLACK



MODERO X SERIES 701



MODERO X SERIES 1001



10.1" & 7" FLUSH MOUNT KITS

4.3"

moderoX

WIDESCREEN WALLS



MODERO X SERIES 430 | 4.3" WIDESCREEN

Small and Mighty

Don't underestimate the smallest of the Modero X Touch Panels. This unique portrait Modero 4.3" Wall Mount Panel offers the same edge-to-edge capacitive touch glass and multi-touch capabilities as the larger Modero X panels. It enhances any residential architecture by fitting nicely into small spaces such as kitchens and hallways. The 4.3" is also ideal for education settings because it can be flush-mounted into a podium or wall-mounted outside classrooms and conference rooms for scheduling.

KEY FEATURES

- **Expand Design Opportunities** – Extend the beauty of Modero X touch panel control to more rooms and smaller spaces
- **Differentiate Yourself** – The Modero X Series offers design and technology features unmatched in the industry

QUICK FACTS 4.3" WIDESCREEN MODERO X SERIES

Wired / Wireless	Screen Ratio	Screen Resolution	Dimensions (HWD)	Intercom + Phone	Video Capability	Memory + Storage	ENERGY SAVINGS
WIRED	9:16	480 x 800	4 7/8" x 3 1/4" x 2 3/8"	YES	FULL MOTION	512 STD 4 GB FLASH	80%**

**Energy savings is an estimated value based on integration of RMS and Smart Programming

MODERO X SERIES FAMILY

OPTIONS

- ORIENTATION: PORTRAIT
- LOCATION: WALL
- EXTRAS: MULTI-TOUCH, LIGHT/MOTION SENSOR, PoE ENABLED, BLUETOOTH SUPPORT, NFC-READY
- COLOR: BLACK



MODERO X SERIES 430



430 FLUSH MOUNT KITS

multi preview accessories

modero X/S



Preview the Perfect Meeting: Visually Select from up to 10 Input Sources

The Multi Preview (MXA-MP) and Multi Preview Live (MXA-MPL) simplify the perfect meeting user experience by giving presenters an easy way of identifying and selecting the video they want from up to 10 source devices. Users no longer have to guess what video is being output from what source. Instead, they simply choose from a row of preview images (selected image can be converted to an HD video stream with the MXA-MPL) on their Modero X or Modero S Series touch panel. So instead of guessing what's on "PC1", they can touch an easily recognized source image and have it immediately show onscreen.



MODERO X/S SERIES MXA-MP | MULTI PREVIEW
MODERO X/S SERIES MXA-MPL | MULTI PREVIEW LIVE

DEALER BENEFITS

- Perfect your clients' meeting presentations even further with a simple and more visually effective way of selecting video input sources for displaying during meetings
- For the most accurate preview point of source video being output the MXA-MPL offers the ability to view a live HD video stream being output from the source

MULTI PREVIEW FAMILY

OPTIONS

LOCATION:
RACK, TABLE

INPUTS:
1 DVI-I MULTI-FORMAT VIDEO, 1 1/8TH-INCH MINI-JACK AUDIO

OUTPUTS:
1 HDMI PREVIEW VIDEO
2-PIN 3.5 MM PHOENIX-STYLE

COLOR:
BLACK



MODERO X/S SERIES MULTI PREVIEW



MODERO X/S SERIES MULTI PREVIEW LIVE

modero Sseries



Simply Beautiful,
Beautifully Simple

Scheduling and Control
– Now In a Gorgeously
Cost Effective New
Touch Panel Family

Want to bring the same sleek styling, control and scheduling functionality of the award-winning Modero X Series into all your meeting space designs – even those with budget constraints? The new Modero S Series perfectly complements the design of the Modero X but is more applicable for cost sensitive installations such as smaller huddle spaces. It's also perfect for dedicated wall scheduling outside meeting rooms. Even though the Modero S is priced significantly less, you still get much of the core functionality that makes the Modero X so powerful, including beautiful 24 bit color depth, streaming video, and elegant low profile mounting options like surface/glass and secure lectern/tabletop. With the range of options available, the Modero S will enhance the sophistication of any architecture.

- **Architectural design consistency with both Modero S and X** – available in 4.3", 7" and 10.1" in both table and wall mounts
- **Easily Schedule Rooms with Front & Side-Facing Room Availability LEDs** – Our wall-mounted Modero S Series touch panels include front- and side-facing LEDs to make room scheduling and quick determination of room availability easy whether viewing straight-on, at an angle or from down the hall.
- **Secure mounting options** – Discourage theft with secure lectern/table mount options
- **SmoothTouch™ Glass Overlay Technology** – Combines resistive touch and glass into a single overlay that is more rugged and has a greater tolerance to electrical noise than capacitive touch glass overlays. SmoothTouch is also ideal for its ability to connect with the user via indirect touches like a gloved hand, stylus, or prosthetic.

10.1", 7", 4.3"

moderos
WIDESCREEN TABLETOPS



MODERO S SERIES 431 | 4.3" WIDESCREEN

MODERO S SERIES 1001 | 10.1" WIDESCREEN
MODERO S SERIES 701 | 7" WIDESCREEN

Basic Beauty, Rugged Form

Now there's a tabletop Modero for even the most budget conscious basic meeting spaces. The Modero S 10.1", 7" and 4.3" panels provide full room control, VoIP, brilliant 24-bit color depth, PoE connectivity, Bluetooth, USB and streaming video. With all this and new ruggedized plastic housing and secure mounting they have a place at every table.

KEY FEATURES

- **Maintain Design Consistency on a Budget** – No need to compromise style to meet budget, the new Modero S line perfectly complements the original Modero X
- **Secure Table Mount Kits** – Attract customers like higher education with this reassuring theft deterrent
- **SmoothTouch™ Glass Overlay Technology** – Combines resistive touch and glass into a single overlay that is more rugged and has a greater tolerance to electrical noise than capacitive touch glass overlays. SmoothTouch is also ideal for its ability to connect with the user via indirect touches like a gloved hand, stylus, or prosthetic

QUICK FACTS 10.1" WIDESCREEN MODERO S SERIES

Wired / Wireless	Screen Ratio	Screen Resolution	Dimensions (HWD)	Intercom + Phone	Video Capability	Memory + Storage	ENERGY SAVINGS
WIRED	16:9	1280 x 800	6 3/16" x 10 1/6" x 4 1/16"	YES	FULL MOTION	512 MB RAM	82%**

*See AMX.com for other 10.1" Widescreen Modero S Series model dimensions and all metric dimensions

**Energy savings is an estimated value based on integration of RMS and Smart Programming

QUICK FACTS 7" WIDESCREEN MODERO S SERIES

Wired / Wireless	Screen Ratio	Screen Resolution	Dimensions (HWD)	Intercom + Phone	Video Capability	Memory + Storage	ENERGY SAVINGS
WIRED	16:9	1024 x 600	4 1/2" x 7 3/8" x 3 3/16"	YES	FULL MOTION	512 MB RAM	82%**

*See AMX.com for other 7" Widescreen Modero S Series model dimensions and all metric dimensions

**Energy savings is an estimated value based on integration of RMS and Smart Programming

QUICK FACTS 4.3" WIDESCREEN MODERO S SERIES

Wired / Wireless	Screen Ratio	Screen Resolution	Dimensions (HWD)	Intercom + Phone	Video Capability	Memory + Storage	ENERGY SAVINGS
WIRED	16:9	480 x 272	3 1/4" x 5 1/16" x 3 1/8"	YES	M-JPEG	512 MB RAM	80%**

*See AMX.com for other 4.3" Widescreen Modero S Series model dimensions and all metric dimensions

**Energy savings is an estimated value based on integration of RMS and Smart Programming

MODERO S SERIES FAMILY

OPTIONS

ORIENTATION:

LANDSCAPE

LOCATION:

TABLE

EXTRAS:

STREAMING VIDEO, INTERCOM / VOIP TELEPHONE, USB FOR KEYBOARD & MOUSE, BLUETOOTH FOR AUDIO / KEYBOARD & MOUSE



MODERO S SERIES 1001



MODERO S SERIES 701



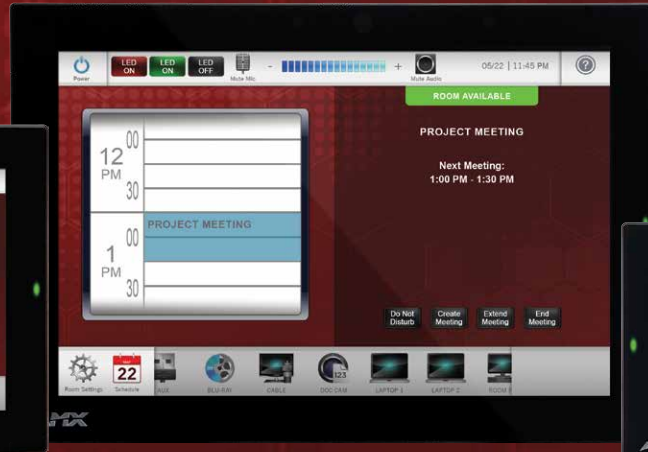
MODERO S SERIES 431

10.1", 7", 4.3"

moderos
WIDESCREEEN WALLS



MODERO S SERIES 1001 | 10.1" WIDESCREEEN
MODERO S SERIES 701 | 7" WIDESCREEEN



MODERO S SERIES 431 | 4.3" WIDESCREEEN

Scheduling Can Be a Thing of Beauty

Is that meeting room available? Who's in there? When will they be done? Can I reserve the room yet? These are all very simple questions that can be surprisingly difficult to answer. Until now. Place a Modero S Series Wall Mount Touch Panel outside every meeting room to view the room schedule at a glance and even reserve it right there at the panel – and get all of this at a price that fits just about any installation budget.

KEY FEATURES

- **Front-facing and Side-Facing Room Availability LEDs for 180° Viewing** – Front- and side-facing LEDs make viewing room availability visible from any angle. Easily glance down the hall and determine whether meeting spaces are occupied no matter if they are being viewed straight on or from the side.
- **Stylish mounting options for any surface including glass** – Use new Any Mount kits to install in any room with a light switch/gang box
- **Architectural design consistency with both Modero S and X** – available in 4.3", 7" and 10.1" in both table and wall mounts
- **SmoothTouch™ Glass Overlay Technology** – Combines resistive touch and glass into a single overlay that is more rugged and has a greater tolerance to electrical noise than capacitive touch glass overlays. SmoothTouch is also ideal for its ability to connect with the user via indirect touches like a gloved hand, stylus, or prosthetic

QUICK FACTS 10.1" WIDESCREEEN MODERO S SERIES

Wired / Wireless	Screen Ratio	Screen Resolution	Dimensions (HWD)	Intercom + Phone	Video Capability	Memory + Storage	ENERGY SAVINGS
WIRED	16:9	1280 x 800	6 3/16" x 10 3/8" x 2 5/16"	YES	FULL MOTION	512 MB RAM	82%**

*See AMX.com for other 10.1" Widescreen Modero S Series model dimensions and all metric dimensions

**Energy savings is an estimated value based on integration of RMS and Smart Programming

QUICK FACTS 7" WIDESCREEEN MODERO S SERIES

Wired / Wireless	Screen Ratio	Screen Resolution	Dimensions (HWD)	Intercom + Phone	Video Capability	Memory + Storage	ENERGY SAVINGS
WIRED	16:9	1024 x 600	4 7/8" x 7 3/8" x 2 1/4"	YES	FULL MOTION	512 MB RAM	82%**

*See AMX.com for other 7" Widescreen Modero S Series model dimensions and all metric dimensions

**Energy savings is an estimated value based on integration of RMS and Smart Programming

QUICK FACTS 4.3" WIDESCREEEN MODERO S SERIES

Wired / Wireless	Screen Ratio	Screen Resolution	Dimensions (HWD)	Intercom + Phone	Video Capability	Memory + Storage	ENERGY SAVINGS
WIRED	16:9	480 x 272	3 3/8" x 5 1/16" x 2 5/8"	YES	M-JPEG	512 MB RAM	80%**

*See AMX.com for other 4.3" Widescreen Modero S Series model dimensions and all metric dimensions

**Energy savings is an estimated value based on integration of RMS and Smart Programming

MODERO S SERIES FAMILY

OPTIONS

ORIENTATION:

LANDSCAPE

LOCATION:

WALL

EXTRAS:

STREAMING VIDEO, INTERCOM / VOIP TELEPHONE, USB FOR KEYBOARD & MOUSE, BLUETOOTH FOR AUDIO / KEYBOARD & MOUSE



MODERO S SERIES 1001



MODERO S SERIES 701



MODERO S SERIES 431



10.1", 7" & 4.3" MULTI MOUNT KITS



Cisco Certified Wireless
Features Cisco CCXv4 certified wireless security, ideal for government, financial and other secure installations.



You Make the Call
With integrated telephone and intercom capability, easily place and receive telephone or intercom calls down the hall or around the globe.



Touch and Go
The convenient capacitive navigation pad offers simplified up, down, right and left navigation just by touching the direction you would like to go in.

The Whole Nine Yards
With a full nine inches of touch screen real estate and integrated full motion video, multi-window videoconferencing is easy to see and control.

MODERO VIEWPOINT 9000i | 9" WIDESCREEN

The Choice Is Simple: Wired & Wireless

The MVP-9000i combines the speed and security of a Power over Ethernet (PoE) wired connection with the freedom of an 802.11 a/b/g wireless connection by simply removing the panel from the docking station. Integrated telephone/ intercom calling, expansive 9" widescreen display and gesturing and page transitions make this one of our most versatile touch panels.

KEY FEATURES

- Leave your PC at home and easily update your customer's firmware or transfer new touch panel pages directly from a micro-SD or USB stick
- Antenna diversity improves wireless reliability by integrating two antennas that smartly switch to the strongest signal, which ultimately decreases the number of lost connections and unhappy end users
- Rough-in box (optional) can be mounted in drywall, concrete, brick and a variety of uneven or solid surfaces

QUICK FACTS 9" MODERO

Wired / Wireless	Screen Ratio	Screen Resolution	Dimensions (HWD)	Intercom + Phone	Video Capability	Memory + Storage	ENERGY SAVINGS
PoE WIRED/ 802.11 A/B/G WIRELESS	16:9	800 x 480	7 5/8" x 11" x 1 1/16"	YES	FULL MOTION JPEG	2GB INTERNAL MICRO SD (1.1 GB ACCESSIBLE TO USER)	80%**

*Metric dimensions available at AMX.com
**Energy savings is an estimated value based on integration of RMS and Smart Programming

A CLOSER LOOK

FLIP IT!
Now with a simple swipe of the screen, users can "gesture" from page to page, just like turning the pages of a book.

SPEAKING YOUR LANGUAGE
We added several international fonts to the user interface including right to left languages such as Arabic. A combination of language styles can be used and this enhancement is available now through a new firmware enhancement for the MVP-9000i, MVP-9200i and additional touch panels will be available soon.



9" MODERO FAMILY

TOUCH PANEL OPTIONS

ORIENTATION:
LANDSCAPE, PORTRAIT

LOCATION:
HANDHELD, TABLE, WALL

EXTERNAL BUTTONS:
4 PROGRAMMABLE CAPACITIVE BUTTONS WITH ON-SCREEN FLY OUT LABELS, 1 CAPACITIVE NAVIGATION PAD

COLORS:
BLACK, WHITE



MODERO MVP-9000i



WALL CHARGING STATION
Also available in white



TABLE CHARGING STATION
Also available in white

Check the Hours
Right from your laptop, you can check the number of remaining lamp hours on your client's pool lighting so you can change lights before they go out.

PC or Mac
With either a PC or Mac, simply navigate over the Internet to the NXV-300. Login with a username/ password and your touch panel interface appears on the screen and is viewable in two resolutions, 800x480 and 480x272.



Remote Diagnostics
Diagnose issues with the client's pool/ spa heaters remotely using Resource Management Suite and the NXV-300.

Point to Touch
To navigate your Touch Panel screens, use the PC's mouse and screen pointer to touch buttons and sectors of the touch panel to initiate actions just like touching the touch panel.

MODERO NXV-300 | VIRTUAL TOUCH PANEL

Power and Functionality WITHOUT the Panel

When you need the intelligence and ease of use that only a touch panel can offer but from remote locations, this small rack-mountable device allows you to access NetLinx Control systems from any PC or Mac via Virtual Network Connection (VNC).

KEY FEATURES

- Provides ability to remotely control the AMX system for support
- Easy to Install – Rack Mountable
- Great way to introduce budget-sensitive customers to the possibilities of control.

QUICK FACTS VIRTUAL MODERO

Wired / Wireless	Communication	Power	Dimensions (HWD)	Memory + Storage
WIRED	ETHERNET	POWER OVER ETHERNET (POE)	1 5/8" x 5 1/2" x 4"	64 STD 256 FLASH

*Metric dimensions available at AMX.com

A CLOSER LOOK



VIRTUAL MODERO FAMILY

OPTIONS

- LOCATION:
TABLE, RACK-MOUNT
- EXTERNAL BUTTONS:
NONE
- COLORS:
BLACK



MODERO NXV-300

Modero® Series Touch Panels

TOUCH PANELS SPECS / CAPABILITIES COMPARISON CHART

	MODEL	SOFTWARE		HARDWARE				MOUNTING OPTIONS				COMMUNICATION CAPABILITIES					NOCOMM AVAILABLE [†]	SENSORS & CONTROL CAPABILITIES			
		Graphics Engine (OS)	Support for Android Apps	Processor (Single- or Quad-core)	Memory (RAM)	Casing Materials	Display Type	Side-Mounted Scheduling LEDs	Flush	Rack	Secure table	Glass/Multi-Surface	Multi-Preview/Multi-Preview Live Support	Streaming Video (M-JPEG, MPEG-2, MPEG-4)	720p HD Camera for video conferencing	Intercom/VoIP Telephone capability		USB for mice / keyboards	Light/ Motion Sensors for SmartWaking	NEC for Authentication	Bluebooth for audio and mice/keyboards
MODERO X with G5	MXT-2001-PAN	G5	•	Quad	2GB	Aluminum Unibody	Multitouch Capacitive w/ IPS				•	•	•	•	•	•		•	•	*	
	MXD-2001-PAN-L	G5	•	Quad	2GB	Aluminum Unibody	Multitouch Capacitive w/ IPS		•	•		•	•	•	•	•		•	•	*	
	MXD-2001-PAN-P	G5	•	Quad	2GB	Aluminum Unibody	Multitouch Capacitive w/ IPS		•			•	•	•	•	•		•	•	*	
	MXT-1901-PAN	G5	•	Quad	2GB	Aluminum Unibody	Multitouch Capacitive w/ IPS				•	•	•	•	•	•		•	•	*	
	MXD-1901-PAN-L	G5	•	Quad	2GB	Aluminum Unibody	Multitouch Capacitive w/ IPS		•	•		•	•	•	•	•		•	•	*	
	MXD-1901-PAN-P	G5	•	Quad	2GB	Aluminum Unibody	Multitouch Capacitive w/ IPS		•			•	•	•	•	•		•	•	*	
	MXT-1001	G5	•	Quad	2GB	Aluminum Unibody	Multitouch Capacitive w/ IPS				•	•	•	•	•	•		•	•	*	
	MXD-1001-L	G5	•	Quad	2GB	Aluminum Unibody	Multitouch Capacitive w/ IPS		•	•		•	•	•	•	•		•	•	*	
	MXD-1001-P	G5	•	Quad	2GB	Aluminum Unibody	Multitouch Capacitive w/ IPS		•			•	•	•	•	•		•	•	*	
	MXT-701	G5	•	Quad	2GB	Aluminum Unibody	Multitouch Capacitive w/ IPS				•	•	•	•	•	•		•	•	*	
	MXD-701-L	G5	•	Quad	2GB	Aluminum Unibody	Multitouch Capacitive w/ IPS		•	•		•	•	•	•	•		•	•	*	
	MXD-701-P	G5	•	Quad	2GB	Aluminum Unibody	Multitouch Capacitive w/ IPS		•			•	•	•	•	•		•	•	*	
MODERO S	MST-1001	G4		Single	512MB	Ruggedized Polycarbonate	SmoothTouch™ resistive				•	•	•	•	•	•					
	MSD-1001-L	G4		Single	512MB	Ruggedized Polycarbonate	SmoothTouch resistive	•			•	•	•	•	•	•				•	
	MST-701	G4		Single	512MB	Ruggedized Polycarbonate	SmoothTouch resistive				•	•	•	•	•	•				•	
	MSD-701-L	G4		Single	512MB	Ruggedized Polycarbonate	SmoothTouch resistive	•			•	•	•	•	•	•				•	
	MST-431	G4		Single	512MB	Ruggedized Polycarbonate	SmoothTouch resistive				•	•	•	•	•	•	M-JPEG Only				•
	MSD-431-L	G4		Single	512MB	Ruggedized Polycarbonate	SmoothTouch resistive	•			•	•	•	•	•	•	M-JPEG Only				•
MODERO X with G4	MXT-2000XL-PAN	G4		Single	512MB	Aluminum Unibody	Multitouch Capacitive w/ IPS				•	•	•	•	•	•		•	•	•	
	MXD-2000XL-PAN-L	G4		Single	512MB	Aluminum Unibody	Multitouch Capacitive w/ IPS		•	•		•	•	•	•	•		•	•	•	
	MXD-2000XL-PAN-P	G4		Single	512MB	Aluminum Unibody	Multitouch Capacitive w/ IPS		•			•	•	•	•	•		•	•	•	
	MXT-1900L-PAN	G4		Single	512MB	Aluminum Unibody	Multitouch Capacitive w/ IPS				•	•	•	•	•	•		•	•	•	
	MXD-1900L-PAN-L	G4		Single	512MB	Aluminum Unibody	Multitouch Capacitive w/ IPS		•	•		•	•	•	•	•		•	•	•	
	MXD-1900L-PAN-P	G4		Single	512MB	Aluminum Unibody	Multitouch Capacitive w/ IPS		•			•	•	•	•	•		•	•	•	
	MXT-1000	G4		Single	512MB	Aluminum Unibody	Multitouch Capacitive w/ IPS				•	•	•	•	•	•		•	•	•	
	MXD-1000-L	G4		Single	512MB	Aluminum Unibody	Multitouch Capacitive w/ IPS		•	•		•	•	•	•	•		•	•	•	
	MXD-1000-P	G4		Single	512MB	Aluminum Unibody	Multitouch Capacitive w/ IPS		•			•	•	•	•	•		•	•	•	
	MXT-700	G4		Single	512MB	Aluminum Unibody	Multitouch Capacitive w/ IPS				•	•	•	•	•	•		•	•	•	
	MXD-700-L	G4		Single	512MB	Aluminum Unibody	Multitouch Capacitive w/ IPS		•	•		•	•	•	•	•		•	•	•	
	MXD-700-P	G4		Single	512MB	Aluminum Unibody	Multitouch Capacitive w/ IPS		•			•	•	•	•	•		•	•	•	
	MXD-430	G4		Single	512MB	Aluminum Unibody	Multitouch Capacitive w/ IPS	•				•	•	•	•	•		•	•	•	

[†]NoComm panels are designed specifically for dedicated room control in restricted environments, and exclude the camera, Near Field Communication™ (NFC), microphone and Bluetooth.

*TBA via future firmware update.

mounting

options modero

Secure Your Panels in Style

Make sure the most simply beautiful and beautifully simple touch panels stay safely where you put them with our variety of secure and stylish mounting options. These cost-effective, intelligently designed solutions provide the flexibility to solve any integration challenge.

24/7 SECURITY

New secure table mounting hardware is a beautifully styled plate that when attached to the Modero X or S 7", 10.1", 19.4", 20.3" or 4.3" Tabletop Touch Panels and secured with the under-table tamper resistant bolts will make it virtually theft proof. Need a solution that doesn't require the touch panel be mounted to the table? The secure mounting plate can be attached to the touch panel (but not the table) and then secured with a Kensington® Lock. You can even use both.



MULTI MOUNT

The Modero S Touch Panels can be mounted to any smooth surface including glass, blending the beauty of Modero S with the ever growing trend towards glass surfaces in education and corporate facilities.



ANY MOUNT

Mount Modero S Series Touch Panels in any room with the new Any Mount kit. It's as simple as replacing a light switch.



TOTALLY FLUSH

All Modero X Wall Mount Touch Panels can now sit perfectly flush within the walls. Want access to the side buttons? Or, do you want to expose the speakers for better audio? Simply press on the touch panel and the spring-loaded mechanism allows the panel to sit slightly farther out.



BEAUTY IN THE SERVER ROOM

Modero X 7", 10.1", 19.4" and 20.3" Landscape Wall Mount Touch Panels, and Modero S 7" and 10.1" Wall Mount Touch Panels can be mounted directly to an equipment rack.



MODERO S SERIES TOUCH PANEL MOUNTING OPTIONS

MODEL	ANY MOUNT	RACK	SECURE TABLE	MULTI MOUNT
MSD-1001-L	MSA-AMK-10	MSA-RMK-10		MSA-MMK-10
MST-1001			MSA-STMK-10	
MSD-701-L	MSA-AMK-07	MSA-RMK-07		MSA-MMK-07
MST-701			MSA-STMK-07	
MSD-431-L				MSA-MMK-43
MST-431			MSA-STMK-43	

All Modero S Wall Mount Touch Panels ship with standard wall mount hardware

MODERO X SERIES TOUCH PANEL MOUNTING OPTIONS

MODEL	RACK	SECURE TABLE	FLUSH
MXT-2001-PAN / MXT-2000XL-PAN		MXA-STMK-20	
MXD-2001-PAN-P / MXD-2000XL-PAN-P			MXA-FMK-20
MXD-2001-PAN-L / MXD-2000XL-PAN-L	MXA-RMK-20		MXA-FMK-20
MXT-1901-PAN / MXT-1900L-PAN		MXA-STMK-19	
MXD-1901-PAN-P / MXD-1900L-PAN-P			MXA-FMK-19
MXD-1901-PAN-L / MXD-1900L-PAN-L	MXA-RMK-19		MXA-FMK-19
MXT-1001 / MXT-1000		MXA-STMK-10	
MXD-1001-P / MXD-1000-P			MXA-FMK-10
MXD-1001-L / MXD-1000-L	MXA-RMK-10		MXA-FMK-10
MXT-701 / MXT-700		MXA-STMK-07	
MXD-701-P / MXD-700-P			MXA-FMK-07
MXD-701-L / MXD-700-L	MXA-RMK-07		MXA-FMK-07
MXD-430			MXA-FMK-43

All Modero X Wall Mount Touch Panels ship with standard wall mount hardware

Why digital?

Digital is a standard in computer video applications. Digital provides a brilliant picture every time by eliminating the chance of blurred images, edges and loss of brightness due to common analog video bandwidth loss. And, inherently digital provides accurate transmission of source image color information providing true colors every time.

Includes New & Improved

TakeNote!
embedded

Annotate directly over any video source including your PC – straight out of the box. No additional PC applications needed.



TOTAL PRESENTATION INTERFACE | TPI-PRO-DVI-4

The Perfect Answer to Every Presenter's Dreams

The TPI-PRO-DVI is the perfect tool for any presentation whether it takes place in a boardroom, classroom, or any room in between. Preview up to four sources, select one to show full screen, control the source and annotate over the video from an AMX touch panel, or directly on a touch-enabled monitor.

KEY FEATURES

- **Both Analog or Digital** – Displays and converts multiple video sources (Composite, S-video, Component, RGB, and DVI)
- **Flexible Video** - Display video from up to four sources in windows of independent size and position alongside optional G4 touch panel controls

A CLOSER LOOK



- **Integrated KVM Switch** – Route a single keyboard and mouse to up to four computers (both Macs and PCs)
- **Embedded Annotation** – with TakeNote Embedded™ you can annotate right over any video source (including your PC) without the need for any additional PC application. So presenters can write or draw on any of the live video images or a still picture, and annotations can be saved as JPEGs for later use

PRESENTATION INTERFACE FAMILY

OPTIONS

OF INPUTS:
2 OR 4

EACH INPUT SUPPORTS:
COMPOSITE, S-VIDEO, COMPONENT, RGB AND DVI
(ON DVI-I CONNECTORS)

2 VIDEO OUTPUTS:
DVI AND RGB UP TO 1920X1200 AT 60 HZ
(ON DVI-I CONNECTORS)



TPI-PRO-DVI-2 / TPI-PRO-DVI-4

Massio Keypads

Easily Configured via RPM
Massio ControlPads are quickly and easily configured using the AMX Rapid Project Maker (RPM) cloud-based configuration tool with no programming required.

RMS Compatible
Communicates with AMX Resource Management Suite Enterprise for enabling remote diagnostics, room management and control of every room on the network.

Rotary Control
8-button Massio ControlPads include a convenient rotary control knob with backlit ramp level indicators. These offer the ability to quickly ramp up/down volume, lighting or any rampable device control aspect.



MASSIO 8-BUTTON CONTROLPAD

PoE Built-In
Power over Ethernet (PoE) simplifies installation and eliminates the need for a separate power cable.



MASSIO 8-BUTTON / 6-BUTTON KEYPADS

- **Works with Massio ControlPads** – Can be paired with other Massio ControlPads for extending control access to additional locations within a room
- **Works with NetLinX Control** – Compliments the Modero style as a secondary control location in any NetLinX controlled room

Cost Effective Keypad + Onboard Controller = Unbeatable, Affordable Room Control

Massio ControlPads combine the installation flexibility and affordability of wall/lectern mount keypads with the full powered device and room control capabilities of a built-in controller. The result is an ideal control interface for classrooms, conference rooms, or any room where simple device and environment control is needed in an equally powerful yet easy to manage user interface. And they're just as simple to configure as they are to use with out of the box configurability using the AMX Rapid Project Maker configuration tool.

KEY FEATURES

- **Easy to Configure Using Rapid Project Maker (RPM)** – Saves installation time and cost while simplifying RMS integration
- **IPv6 and Wired 802.1x** – Supports modern networking standards for internet protocol IPv6 and port-based Network Access Control utilizing

QUICK FACTS MASSIO 8-BUTTON CONTROLPADS

Buttons	Feedback Indicator	Serial Ports	IR Ports	Relay Ports	I/O Ports
8 PUSHBUTTONS ROTARY CONTROL KNOB	BACKLIT BUTTONS BACKLIT BAR GRAPH	2	2	2	2

QUICK FACTS MASSIO 6-BUTTON CONTROLPADS

Buttons	Feedback Indicator	Serial Ports	IR Ports	Relay Ports	I/O Ports
6 PUSHBUTTONS	BACKLIT BUTTONS	1	1	0	0

- **X.509 certificates** for access to protected networks
- **Large Buttons** – Larger text labels can be used to support more descriptive text

MASSIO CONTROLPAD SERIES

OPTIONS

ORIENTATION:
PORTRAIT, LANDSCAPE (MODELS VARY)

LOCATION:
WALL, FLUSH-MOUNT, TABLE TOP

NAVIGATION:
6 OR 8 PUSHBUTTONS, ROTARY CONTROL KNOB (8 BUTTON)

COLORS:
BLACK, WHITE



MASSIO 8-BUTTON CONTROLPAD



MASSIO 6-BUTTON CONTROLPAD – PORTRAIT / LANDSCAPE



MASSIO 6-BUTTON / 8-BUTTON KEYPADS

Android™, Apple® & Windows 8®

TPControl Apps Now Include BYOD Support



Now Supporting BYOD and SIP

Touch Panel Control, the only AMX authorized product partner to provide touch panel functionality from Apple®, Android™ or Windows 8® devices, has added several exciting enhancements, including the ability to connect an unlimited number of TPControl devices to BYOD-licensed NetLinx Controllers, as well as SIP Video/Audio support for Apple and Android TPControl devices. SIP supports and integrates with, but is not limited to SIP door stations, IP phones, video conferencing systems and AMX SIP-enabled devices. Check out a spotlight of the enhanced TPControl features listed below.

- **BYOD Support** - Bring Your Own (TPControl) device to your AMX system. Any device, any time - control is at your fingertips
- **SIP Video and Audio** - SIP soft-phone support to/from your TPControl for Apple® or Android™ device
- **Multi-Profiles** - Dynamically and instantly change connection profiles such as office or home, connecting seamlessly to different control systems from the same device
- **AppControl** - Launch installed applications directly from TPControl; start an SMS, launch an email client, web pages and much more without leaving the TPControl environment
- **VoiceControl** - Using Speech-to-Text and Text-to-Speech functionality within TPControl allows you to talk to your control system and have it talk to you
- **Intercom** - Communicate from TPControl to devices such as the AMX Metreau Communicator, AMX Intercom enabled touch panels, and other TPControl enabled devices
- **TPCloud** - Cloud power lets you update TP4 files, change device settings or even apply tokens to TPControl devices, right from the My Account section of the Touch Panel Control website

touchpanelcontrol
Register to get the latest updates REGISTER LOGIN

PRODUCTS
DOWNLOADS
ABOUT US
CONTACT US
HELP DESK

tpcontrol

COMPARISON CHART

The Authorized AMX Touch Panel Application for iPhone, iPod Touch, iPad/iPad mini, Android™ and Windows 8 devices.

iPhone / iPod Touch

[TRY](#)
[BUY](#)
[INFO](#)

"We use TPControl to administer and control all of our conference, training and boardroom control systems. How that Multi-TP4 file support is available, one device can easily be used to seamlessly choose any location which makes administration and support a dream. Nice work TPControl!" - J. Arnes

iPad / iPad mini

[TRY](#)
[BUY](#)
[INFO](#)

"TPControl just worked! It was so easy to implement using my existing IP4 file from another AMX panel." - Joel Carter

Android™ Smartphones

[TRY](#)
[BUY](#)
[INFO](#)

"How that TPControl supports my Android Smartphone, I can take my AMX panel anywhere!" - J. Muhammed

Android™ Tablets

[TRY](#)
[BUY](#)
[INFO](#)

"I love how customizable my panel now is with Google Android at it's core." - P. Rogers

TP4 File Slot KEY

[BUY](#)
[INFO](#)

"We use TPControl to administer and control all of our conference, training and boardroom control systems. How that Multi-TP4 file support is available, one device can easily be used to seamlessly choose any location which makes administration and support a dream. Nice work TPControl!" - J. Arnes

Windows 8 PCs / Tablets

[TRY](#)
[BUY](#)
[INFO](#)

"Great to see a platform supporting enterprise solutions, available as an AMX control interface." - V. Kennedy

www.touchpanelcontrol.com

Lutron® Clear Connect™ Enabled

Don't Be Left In the Dark
With a solution designed by the industry leaders of Light and Control, Your light control commands are executed flawlessly every time.

Smart Sensing
The Clear Connect Occupancy Sensor ensures maximum energy efficiency by accurately sensing when someone is in the room and when they're not to turn lights on and off accordingly.

Interference Free
Lutron's patented RF Technology uses a quiet band to ensure communication between system devices is essentially free of interference.

No Wires Needed
Clear Connect is ideal for retrofit applications because you never have to run new wires to keypads, switches, dimmers and occupancy sensors.



CLEAR CONNECT™ WIRELESS LIGHT CONTROL FROM AMX AND LUTRON



Shine a Light and Control it Wirelessly

The Clear Connect™ Wireless Gateway allows light control to be added to virtually any location, without pulling wires and connects NetLinX Controllers with Lutron Clear Connect dimmers, switches, sensors and keypads. The Clear Connect™ system integrates with existing electrical infrastructure and works with almost any type of lighting, offering light and AV control plus occupancy sensing. Best of all, whether you're using a Modero Touch Panel, R4 Remote or iPad, Clear Connect is easily controlled through any AMX interface.

KEY FEATURES

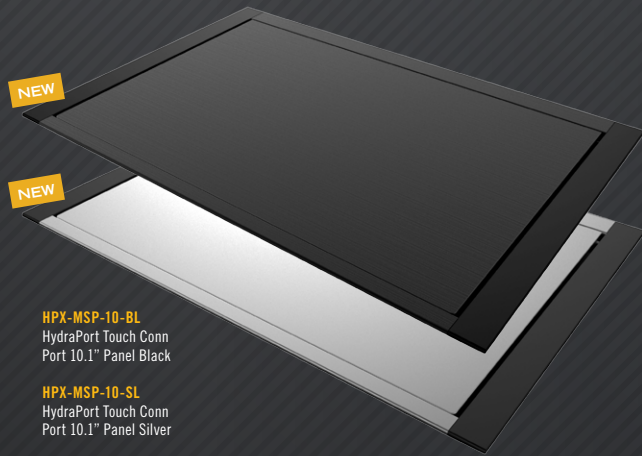
- Easy Installation - Simplify customer installs without running wires by specifying Clear Connect-enabled keypads, switches, dimmers, occupancy sensors
- Reliable Light Control - Ensure ultra-reliable wireless communication between your client's components using Lutron's patented Clear Connect RF Technology
- Simplified AMX Integration - Add devices, create scenes and program the system with no installed software tools using an intuitive web browser
- RMS ready - trigger events based on motion such as turning everything off if no motion is detected for X minutes. Ties into RMS for complete facility energy management

QUICK FACTS CLEAR CONNECT

AVAILABLE IN THE US & CANADA	
NXB-CCG	NXB-CCG, NetLinX Clear Connect Gateway
CCD-6CL	CCD-6CL, Clear Connect Dimmable CFL, LED, INC and Halogen
CCD-6D	CCD-6D, Clear Connect 600W Incandescent/MLV Dimmer
CCD-6NA	CCD-6NA, Clear Connect Phase Adaptive Dimmer
CCD-8S-DV	CCD-8S-DV, Clear Connect 120/277V Switch
CCD-OCR2B-P	CCD-OCR2B-P, Clear Connect Radio Powr Savr™ Ceiling Mount Occupancy/Vacancy Sensor

hydraport touch NEW

ARCHITECTURAL CONNECTION PORT



HPX-MSP-10-BL
HydraPort Touch Conn
Port 10.1" Panel Black

HPX-MSP-10-SL
HydraPort Touch Conn
Port 10.1" Panel Silver



Combining HydraPort Connectivity And Modero S Series Control In a Single Unit

The innovative HydraPort Touch reduces clutter on the table by integrating the touch panel right into the HydraPort AV table box. This elegantly-designed unit opens to reveal a full-featured 10.1" or 7" Modero S Series Touch Panel inside a 10- or 8-module HydraPort chassis. When closed, the unit sits flush with the table top to keep the meeting space neat, clean and free of technology distractions. HydraPort Touch provides yet another efficient and great looking way to streamline the connection and control of devices in conference rooms and classrooms, especially those with limited table space.

KEY FEATURES

- **Connectivity & Control in a Single Unit** – Saves table space and eliminates clutter by combining a full-featured Modero S control panel with a HydraPort table box in a single unit that opens and closes
- **Multiple Sizes & Configurations** – Choose between a 10.1" panel with 10 HydraPort modules and a 7" panel with 8 modules. Easily configure the HydraPort via the AMX HydraPort online configuration tool
- **Sturdy Build** – High quality materials and extra strong hinge mechanism support a long product lifetime, while ensuring that the panel has the ideal amount of resistance when pressed
- **Ultra-Thin Panel Design that Sits Flush When Closed** – Looks great in any room when open or closed
- **Future-Proof Modular Design** – Features a HydraPort assembly with the flexibility to change the modules to meet current and future needs
- **Powerful Graphics** – Powered by the G4 graphics engine, the Modero S Series panel features streaming video and brilliant 24-bit color depth
- **Elegant & Responsive User Interface** – Exclusive SmoothTouch™ display supports single touch gesturing and delivers responsive performance

MyTurn ^{NEW}

SOURCE SELECTOR BUTTONS

I Just Press the Button Whenever it's MyTurn!



AMX CABLES ARE MYTURN READY!

Connectors on new AMX video cables, including retractable cable modules, are pre-configured to connect MyTurn Source Selector Buttons. Compatible cables include:

- 4K60 HDMI
- 4K60 DisplayPort
- 4K60 Mini-DisplayPort
- RGB-Audio
- USB 3.0



It's never been easier to send content from laptops and other devices to the display in a conference room or classroom. All it takes is the push of a button when it's "MyTurn".

MyTurn Source Selector Buttons allow users to quickly and easily "take over" as the source device and send their device's content to the display at the press of a button. The MyTurn Source Selector Button attaches securely to the connector housing of new AMX flat cables, including HydraPort Modules with retractable cables. When pressed, the button transmits a signal to a receiver module that plugs into an I/O port on a Solecis SDX Digital Switcher or other AMX control device. That means meeting participants or students can efficiently collaborate without exchanging cables or leaving their seats. It's a great solution for any meeting space where people view content from multiple devices by switching between them, including active learning environments and Huddle Spaces.

KEY FEATURES

- **Illuminated Button on the Cable Connector** – Quick and easy to select my device when it's MyTurn
- **Switching Right at Your Device** – Participants can send their content to the display at the press of a button without moving from their seat
- **Solecis SDX is MyTurn Ready** – No Need to Program when used with Solecis, reducing cost and simplifying implementation
- **Support Unlimited Number of MyTurn Buttons** – MyTurn is highly scalable as each MyTurn receiver supports 8 MyTurn Buttons
- **Perfect Fit with MyTurn-Ready AMX Cables Either in Retractor Modules or Standalone** – The housing on all new AMX retractable cables include a special clip that's designed to easily accommodate the MyTurn button

hydraport

ARCHITECTURAL CONNECTION PORT

Base Assemblies



HPX-600SL
HydraPort 6 Module Connection
Port Silver Anodized Aluminum Base

HPX-600BL
HydraPort 6 Module Connection
Port Black Anodized Aluminum Base

HPX-900SL
HydraPort 9 Module Connection
Port Silver Anodized Aluminum Base

HPX-900BL
HydraPort 9 Module Connection
Port Black Anodized Aluminum Base

HPX-1200SL
HydraPort 12 Module Connection
Port Silver Anodized Aluminum Base

HPX-1200BL
HydraPort 12 Module Connection
Port Black Anodized Aluminum Base



HPX-1600-BL
Black Anodized Aluminum Base
Assembly with Power Inlet



HPX-1600-SL
Silver Anodized Aluminum Base
Assembly with Power Inlet

Introducing Retractable Cable Modules & Flat Cables

Retractable Cable Modules

Simple, compact design is 85% smaller than the competition



- NEW** **HPX-AV102-HDMI-R**
HDMI 4K60 Module with Retractable Cable
- NEW** **HPX-AV103-RGB+A-R**
RGB with Audio Module with Retractable Cable
- NEW** **HPX-AV102-USB-R**
USB 3.0 Module with Retractable Cable
- NEW** **HPX-N102-ETH-R**
Cat6 Ethernet Module with Retractable Cable
- NEW** **HPX-AV102-MDP-R**
Mini DisplayPort 4K60 Module with Retractable Cable
- NEW** **HPX-AV102-DP-R**
DisplayPort 4K60 Module with Retractable Cable

Flat Cables



- NEW** **CBL-HDMI-FL2**
16 ft HDMI 4K60 Flat Cable
- NEW** **CBL-ETH-FL2**
16 ft Cat6 Ethernet Flat Cable
- NEW** **CBL-MDP-FL2**
16 ft Mini DisplayPort 4K60 Flat Cable
- NEW** **CBL-DP-FL2**
16 ft DisplayPort 4K60 Flat Cable
- NEW** **CBL-RGB+A-FL2**
16 ft RGB with Audio Flat Cable
- NEW** **CBL-USB-FL2**
16 ft USB 3.0 Flat Cable

Control Modules



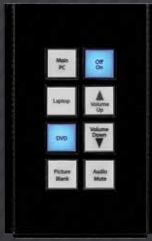
HPX-U400-MET-6N-E
Metreau-6N Keypad Kit - 6-Button with Navigation (with HPX Carrier) for HPX-1600



HPX-U400-R-MET-6N-E
Metreau-6N Keypad Ramp Mount Kit (with HPX Carrier) for HPX-600, 900 & 1200



HPX-U400-MET-7-E
Metreau-7 Keypad Kit - 7-Button (with HPX Carrier) for HPX-1600



HPX-U400-SP-08-AX-E
Novara Keypad with AxLink - 8-Button



HPX-U100-BTN-E
Single Button Module with LED



HPX-U100-2BTN
2-Button Keypad Module

Audio/Video Modules



HPX-AV102-HDMI-R
HDMI 4K60 Module with Retractable Cable



HPX-AV103-RGB+A-R
RGB with Audio Module with Retractable Cable



HPX-AV102-DP-R
DisplayPort 4K60 Module with Retractable Cable



HPX-AV102-MDP-R
Mini DisplayPort 4K60 Module with Retractable Cable



HPX-AV102-USB-R
USB 3.0 Module with Retractable Cable



HPX-AV101-HDMI
Single HDMI Module



HPX-AV100-RGB+A
RGBHV Video with Stereo Audio



HPX-N102-USB-PC
Dual USB Module with Printed Charging Symbol, Includes Power Source



HPX-N102-USB
Dual USB Module with Printed USB Symbol



HPX-N100-USB
Single USB Module

Networking Modules



HPX-N102-ETH-R
Cat6 Ethernet Module with Retractable Cable



HPX-N100-RJ45
Single Cat6 Ethernet Module



HPX-N102-RJ45
Dual Cat6 Ethernet Module

Power Modules

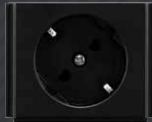
NEW



HPX-P250-PC-MULTI
for HPX-600, 900 & 1200 Power Outlet Modules (Multi-Region Module)



HPX-P200-UK
for HPX-1600
HPX-P250-PC-UK
for HPX-600, 900 & 1200 Power Outlet Modules (UK)



HPX-P200-EU
for HPX-1600
HPX-P250-PC-EU
for HPX-600, 900 & 1200 Power Outlet Modules (EU)



HPX-P200-AU
for HPX-1600
HPX-P250-PC-AU
for HPX-600, 900 & 1200 Power Outlet Modules (AU)



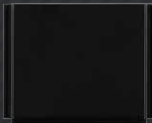
HPX-P200-US
for HPX-1600
HPX-P250-PC-US
for HPX-600, 900 & 1200 Power Outlet Modules (US)



HPX-P200-IN
for HPX-1600
HPX-P250-PC-IN
for HPX-600, 900 & 1200 Power Outlet Modules (IN)

The HPX-1600 compatible modules have discrete hot, neutral and ground wires that connect to a header on the power inlet assembly. The HPX-600/900/1200 compatible modules have individual IEC sockets for connecting to power (US version includes built-in power cable).

Module Blanks & Cable Pass-Thru Modules



HPX-B200
Blank - 2 Module space



HPX-CPT200-W
Cable Pass-Thru Module for HPX-600, 900 & 1200



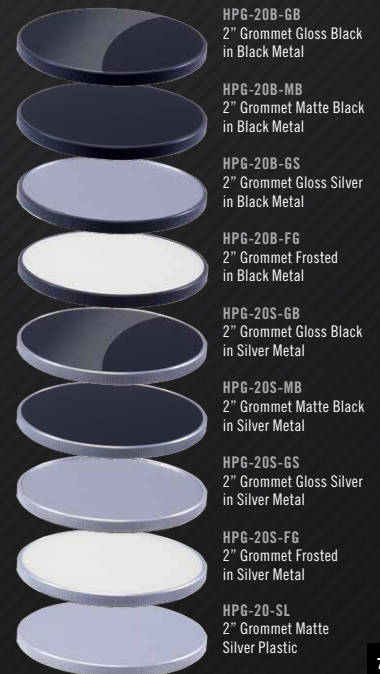
HPX-CPT200
Cable Pass-Thru Module for HPX-1600

HYDRAPORT GROMMETS

The HPG-20 and HPG-10 HydraPort Grommets provide an elegant cable management solution for smaller tables or special locations on larger tables.



HPG-10
3/4" Mini-Grommet



HPG-20B-GB
2" Grommet Gloss Black in Black Metal

HPG-20B-MB
2" Grommet Matte Black in Black Metal

HPG-20B-GS
2" Grommet Gloss Silver in Black Metal

HPG-20B-FG
2" Grommet Frosted in Black Metal

HPG-20S-GB
2" Grommet Gloss Black in Silver Metal

HPG-20S-MB
2" Grommet Matte Black in Silver Metal

HPG-20S-GS
2" Grommet Gloss Silver in Silver Metal

HPG-20S-FG
2" Grommet Frosted in Silver Metal

HPG-20-SL
2" Grommet Matte Silver Plastic

enzo™

Enzo is a content sharing platform purposely designed for meeting rooms, classrooms and other collaboration spaces, providing instant access to a wide variety of content and web conferencing services.



KEY FEATURES

- **Supports Streaming Video** – With the addition of live streaming, Enzo provides enhanced functionality for sharing content such as live television and digital signage
- **Display Control** – Displays connected through the serial port on Enzo can be controlled (configured through RPM)
- **Supports Enzo Content Sharing Platform** – Launch Enzo apps and web pages directly from a Touch Panel or Keypad and utilize Enzo to control the display
- **Screen Mirroring using MirrorOp¹** – Through Enzo, meeting attendees can share content being displayed on guest laptops (Windows/Mac OS X), smartphones and tablets
- **Configure Using Rapid Project Maker (RPM)** – Available in RPM 2.0, custom Enzo sessions initiated on a touch panel can be enabled via just a click
- **IT Friendly** – Avoids OS updates, viruses and other PC-related maintenance hassles and costs
- **End of session data purge** – Prevents unintended disclosure of confidential information
- **PoE, Pass-Through Ethernet and Small Form Factor** – Easy to Install practically anywhere

¹MirrorOp is the industry leading technology for wireless mobile content sharing.

1 INSTANT ON



Walk in. Touch Any Button. You're On.

2 INSTANT CONTENT



Locate your content on Dropbox, the Web or USB or share your screen.

3 INSTANT MEETING



Open Your File and Go

4 INSTANT SHARE



Others Want Your Presentation Materials?

5 INSTANT MIRRORING



Share your Screen with Others

(Share the content on your laptop, phone or tablet with other meeting attendees via Enzo)

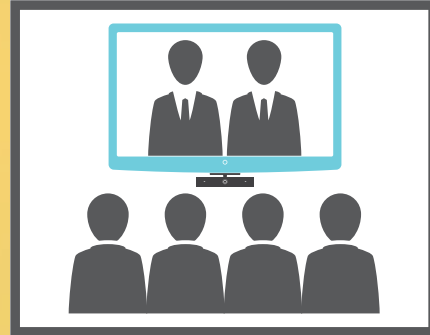
6 INSTANT CONTROL



Add Control of Lights, Volume, etc. via Enzo
(When part of an AMX Control Solution)

NEW

7 INSTANT STREAMING



Display Live Video Stream

NEW

8 INSTANT MODERATOR



Use Moderator Mode to Select Content

(Select what content is mirrored full screen or with Quad View)



Explore all the possibilities of Enzo at:
www.amx.com/enzo

Sereno

From Any Angle

The included swivel base makes it simple to ensure Sereno can capture the view regardless of room layout or display location.

Enzo Friendly

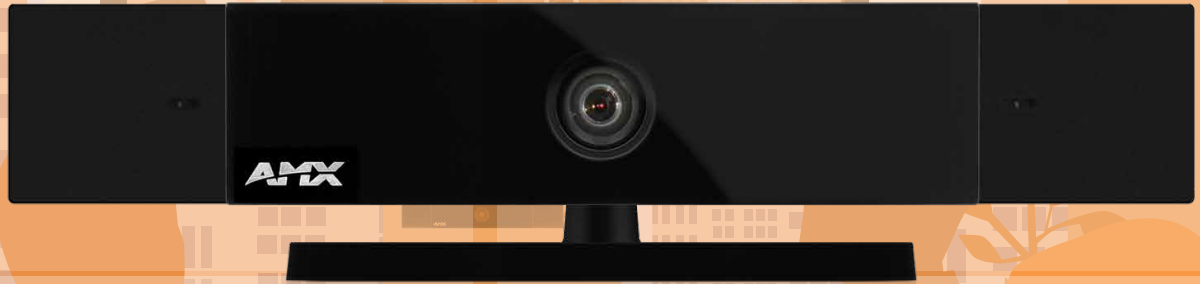
Sereno perfectly complements the Enzo Content Sharing Platform to complete a turnkey meeting room solution.

Go Wide

With an ultra wide field of view, web conference participants can easily see everyone in the room no matter where they're sitting.

Mechanically Secure

Sereno's mechanical shutter provides business and government clients with the confidence of knowing that cameras are not broadcasting when closed.



Empowering HD Web Conferencing – One Huddle Space at a Time

Sereno is the first video conferencing camera purposely designed to support web conferencing in huddle spaces and smaller meeting rooms and perfectly complements the Enzo Content Sharing platform. Sereno features HD quality video and outstanding voice capture, mechanical shutter/electronic microphone disconnect - and its affordable enough to easily integrate HD web conferencing into any facility - large or small.

KEY FEATURES

- **1080p HD Video Quality** – Provides excellent video image quality to ensure vivid high quality web conferences
- **Microphones Focus On Voices** – Beamforming technology focuses on the person who is speaking and filters out unwanted noise
- **Ultra Wide Field-of-View** – Ensures every participant can be seen no matter how small or large the meeting space
- **Mechanical Video/Microphone Shutter** – Ideal for business, government or other applications requiring increased security

QUICK FACTS SERENO VIDEO CONFERENCING CAMERA

Camera Resolution	Mounting Option	Power Consumption	Dimensions (HWD)
Up to 1920x1080 @ 30 fps	Swivel base for mounting above or below display. Base includes tripod mount.	5V / 500mA Max	1 3/4" x 7 5/16" x 1 1/2" (4.4 cm x 18.5 cm x 3.9 cm)

USB 2.0 EXTENSION CABLES OFFER MORE SERENO MOUNTING LOCATIONS

These active USB cables support video streaming from the Sereno Conferencing Camera and extend the distance between connected devices.



5m USB 2.0 Extension Cable



10m USB 2.0 Extension Cable

NEW

AMX | RPM

RAPID PROJECT MAKER, Ver. 2.4 Design, Configure, Deploy

- Design, Configure, and Deploy AMX Systems in Less than an Hour
- Now New Touch Panel UI options



Create the Perfect Meeting in Under an Hour

You need to create an environment to hold **The Perfect Meeting** – where your presentation material, video, audio and room control technology work together seamlessly to make your meeting a success.

But why do so many meetings fail? It's frequently because of difficulties with the technology that manages the crucial presentation material in your conference rooms and classrooms. The system is too complex, it's unreliable, or it's a nightmare to set up and configure in the first place.

Rapid Project Maker (RPM) is an application designed to eliminate your meeting room technology problems. AMX leveraged decades of experience to bring you a software system that guides you through the process of setting up all of your conference room or classroom technology quickly, easily and reliably - so that everything works perfectly from the start.

For complete details and to get started with RPM today, visit the RPM Portal at www.amxrpm.com.

WITHOUT RPM Automating a Conference Room is:	WITH RPM Automating a Conference Room is:
Difficult. Requires extensive programming skills.	Simple. No programming or sophisticated technical knowledge required.
Time Consuming. Takes days or weeks to program a system.	Fast. Set up a complete system in an hour or less that works perfectly from the start.
Expensive. Programming costs can consume a budget.	Affordable. RPM is free and eliminates expensive programming and integration costs.
Unreliable. Complex programming can lead to complex & unreliable installations, resulting in failed meetings.	Rock-Solid. RPM system designs and code are tested and backed by AMX, resulting in the Perfect Meeting.
Inconsistent. Custom programming is difficult to replicate.	Easy to Duplicate. Projects are saved to the AMX Cloud and can be deployed to any number of similar rooms.

FEATURES

NEW

In-Room Touch Panel UI Options – Incorporate more actions on a single screen while minimizing the need to swipe from screen to screen.

NEW

Massio Virtual Keypad – Replicate the Massio ControlPad interface on a mobile device or web page.

NEW

Support for Surface Hub – Use RPM to configure rooms that have Microsoft Surface Hub.

Cloud-Based Tool – Design, configure and manage systems over the web – no software required.

No Programming Required – Dramatically simplifies configuration of an AMX control system.

Configure Systems in Less Than an Hour – With no programming required, complete multiple installations with greater consistency, reliability and efficiency.

THE WHOLE FAMILY

enova DVX

NOW FEATURING NEW NX SERIES
CENTRAL CONTROL PROCESSOR
SECURITY ENHANCEMENTS

NEW

INTRODUCING THE NEWEST
MEMBER OF THE DVX FAMILY

2210HD

FRONT PANEL
CONTROL

AV MENU
NAVIGATION

PEOPLE

MUTE

**INDUSTRY-LEADING NETLINK NX SECURITY
FEATURES INTEGRATED INTO ALL DVX MODELS**
Enhanced security features include user-defined LDAP groups,
IT-standard syslog security reporting, & secure machine-to-machine
communication using HTTPS & SSH.

**3 INDEPENDENT
AUDIO OUTPUTS**

DVX-2210HD-SP
1 Amplified: 2x25W, 8 Ohm;
2 Line-Level + Audio
embedded on any
HDMI or S/PDIF

DVX-2210HD-T
1 Amplified: 75W, 70V/100V;
2 Line-Level + Audio
embedded on any
HDMI or S/PDIF

3 VIDEO OUTPUTS
2 Independent HDMI/HDCP,
1 Mirrored DXLink Twisted
Pair (unpowered)

6 AUDIO + 2 MIC INPUTS
4 Analog, 2 Audio on HDMI,
2 Microphone

**4 VIDEO
INPUTS**
2 Multi-Format DVI
(HDMI/HDCP capable)
2 HDMI/HDCP

**INTERNAL
POWER**
Worldwide
Power Supply
100-240V AC

**NETLINK NX-2200
INTEGRATED CONTROLLER**
4 Serial Ports, 4 IR Ports, 4 I/O Ports, 4 Relay Ports,
1 Ethernet Port, 1 ICSLAN Port, 1 ALink Port

AUDIO DSP
10-band Parametric EQ + Microphone Gating,
Ducking and Limiting

Model Shown: DVX-2210HD-SP



smartScale®

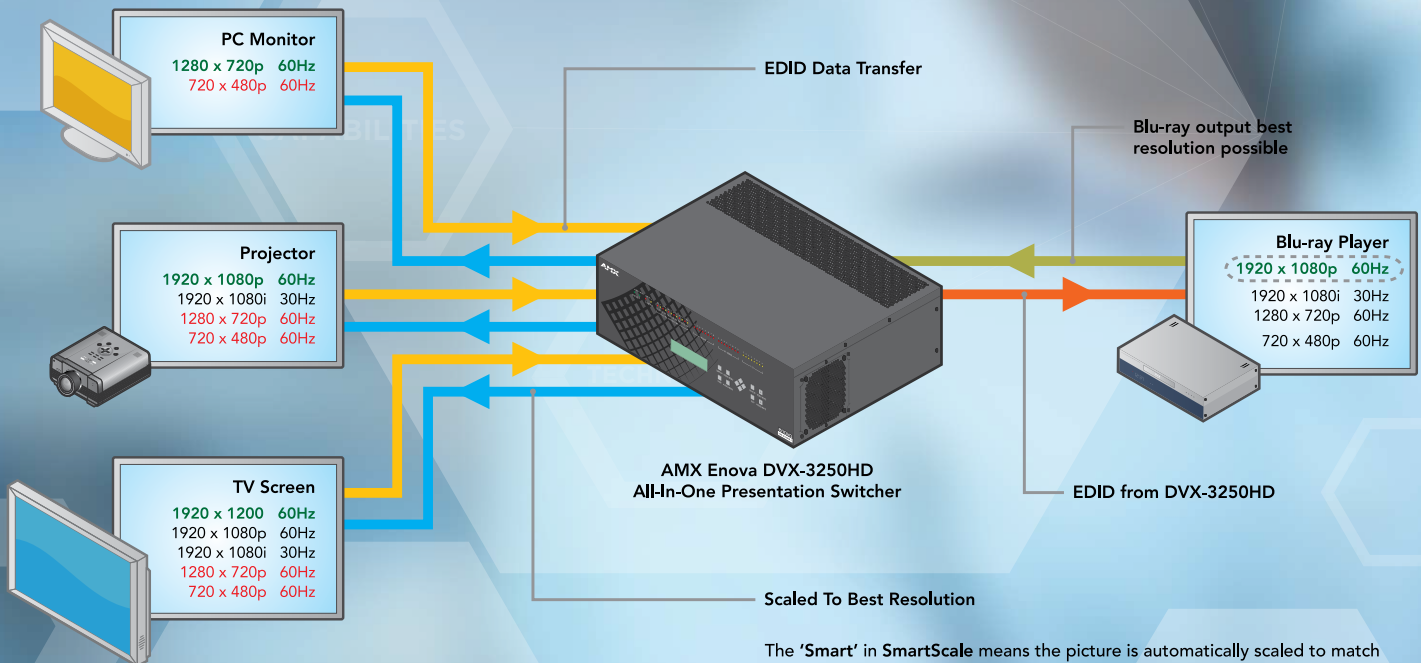
GET THE PICTURE

is the answer

SmartScale automatically responds to the display's declared EDID information to deliver a custom-scaled image, based not only on the preferred resolution but also additional information such as horizontal and vertical pixel count, detailed timing, color space chromaticity and more. No other manufacturer provides automatic video resolution

support with this level of detail. SmartScale eliminates the incompatibilities between sources and displays operating at different resolutions by accepting the highest resolution of every source device to ensure that every display operates at its preferred resolution. SmartScale guarantees every picture looks its best, with no manual adjustments.

Every display shows content at its optimal resolution.



The 'Smart' in SmartScale means the picture is automatically scaled to match the display's best resolution with no manual setup.

SmartScale is available in Enova DVX, Enova DGX, DXLink Twisted Pair and Fiber Receivers.

NEW

All-In-One Presentation Switchers

NOW FEATURING NEW NX SERIES CENTRAL CONTROL

PROCESSOR SECURITY ENHANCEMENTS

DVX-2210HD-SP / DVX-2210HD-T

4 Video Inputs: 2 Multi-Format DVI (HDMI/HDCP capable), 2 HDMI/HDCP, Amplifier (Available in -SP and -T Models): -SP Model (2x25w – 8 Ohm) or -T Model (75w – 70V/100V)



DVX-2210HD-SP / DVX-2210HD-T

6x3 Includes 2 independent, scaled HDMI outputs and 1 independent DXLink Twisted Pair output with power. Includes a NX-2200 Integrated Controller

DVX-2250HD-SP / DVX-2250HD-T

6 Video Inputs: 2 Multi-Format DVI (HDMI/HDCP capable), 4 HDMI/HDCP, Amplifier (Available in -SP and -T Models): -SP Model (2x25w – 8 Ohm) or -T Model (75w – 70V/100V)



DVX-2250HD-SP / DVX-2250HD-T

DVX-2255HD-SP / DVX-2255HD-T

6 Video Inputs: 2 Multi-Format DVI (HDMI/HDCP capable), 2 HDMI/HDCP, 2 DXLink, Amplifier (Available in -SP and -T Models): -SP Model (2x25w – 8 Ohm) or -T Model (75w – 70V/100V)



DVX-2255HD-SP / DVX-2255HD-T

10x4 Includes 4 independent scaled HDMI outputs and 2 DXLink Twisted Pair outputs (unpowered) that mirror two of the scaled HDMI outputs. Includes a NetLink NX-3200 Integrated Controller.

DVX-3250HD-SP / DVX-3250HD-T

10 Video Inputs: 4 Multi-Format DVI (HDMI/HDCP capable), 6 HDMI/HDCP, Amplifier (Available in -SP and -T Models): -SP Model (2x25w – 8 Ohm) or -T Model (75w – 70V/100V)



DVX-3250HD-SP / DVX-3250HD-T

DVX-3255HD-SP / DVX-3255HD-T

10 Video Inputs: 4 Multi-Format DVI (HDMI/HDCP capable), 4 HDMI/HDCP, 2 DXLink, Amplifier (Available in -SP and -T Models): -SP Model (2x25w – 8 Ohm) or -T Model (75w – 70V/100V)



DVX-3255HD-SP / DVX-3255HD-T

DVX-3256HD-SP / DVX-3256HD-T

10 Video Inputs: 2 Multi-Format DVI (HDMI/HDCP capable), 4 HDMI/HDCP, 4 DXLink, Amplifier (Available in -SP and -T Models): -SP Model (2x25w – 8 Ohm) or -T Model (75w – 70V/100V)



DVX-3256HD-SP / DVX-3256HD-T

Presentation Switcher	Model	NX Series Control	Amplifier	Multi-Format Inputs	HDMI Inputs	DXLink Inputs	Analog Audio Inputs	Scaled HDMI Outputs	DXLink Twisted Pair Outputs	Analog Audio Outputs	Control Ports (Serial/IR/IO/Relay)
4x2	DVX-2210HD-SP	YES	2x25w – 8 Ohm	2	2	0	4	2	1**	3	4/4/4/4
	DVX-2210HD-T	YES	75w-70V/100V	2	2	0	4	2	1**	3	4/4/4/4
6x3	DVX-2250HD-SP	YES	2x25w – 8 Ohm	2	4	0	4	2	1*	3	4/4/4/4
	DVX-2250HD-T	YES	75w-70V/100V	2	4	0	4	2	1*	3	4/4/4/4
	DVX-2255HD-SP	YES	2x25w – 8 Ohm	2	2	2	4	2	1*	3	4/4/4/4
	DVX-2255HD-T	YES	75w-70V/100V	2	2	2	4	2	1*	3	4/4/4/4
10x4	DVX-2255HD-T	YES	75w-70V/100V	2	2	2	4	2	1*	3	4/4/4/4
	DVX-3250HD-SP	YES	2x25w – 8 Ohm	4	6	0	8	4	2**	4	8/8/8/8
	DVX-3250HD-T	YES	75w-70V/100V	4	6	0	8	4	2**	4	8/8/8/8
	DVX-3255HD-SP	YES	2x25w – 8 Ohm	4	4	2	8	4	2**	4	8/8/8/8
	DVX-3255HD-T	YES	75w-70V/100V	4	4	2	8	4	2**	4	8/8/8/8
	DVX-3256HD-SP	YES	2x25w – 8 Ohm	2	4	4	6	4	2**	4	8/8/8/8
DVX-3256HD-T	YES	75w-70V/100V	2	4	4	6	4	2**	4	8/8/8/8	

* DVX-225x DXLink output is an independent, unscaled output with power. Scaling occurs at DXLink Receiver.
 ** DVX-2210 and DVX-325x DXLink outputs are unpowered, paired with an HDMI output & contain identical audio & video content as companion HDMI output.

enova DVX

NETLIX NX-SERIES CONTROLLERS

Unrivaled Uptime

To ensure second to none reliability, the NX-Series was designed for mission critical applications and 24/7/365 uptime.

Pushing Network Standards

Two discrete network interfaces (on NX-2200, NX-3200, NX-4200) plus IPv6 and 802.1x networking standards offer unrivaled security support.

NEW

User-Defined LDAP Groups

Create multiple levels of access to different parts of the configuration web pages depending on user requirements.

NEW

Integrated Syslog Reporting

IT-standard syslog security reporting is included as well as secure machine-to-machine communication using HTTPS and SSH.



Next Generation NetLinx NX-Series

- Lightning-Fast Processing
- Mission Critical Reliability
- Compact 1RU Size

From controlling a conference room to managing a global campus, the next generation NetLinx NX-Series of integrated controllers are undoubtedly “the brains” and the backbone of every AMX control and automation application. AMX controllers are renowned for their legendary accuracy and precision and the NX Series builds on this reputation by integrating future-ready scalability; mission critical reliability; lightning-fast processing and a compact enclosure size for added installation flexibility. These enterprise-supportive features make the NX Series an ideal choice for any application, regardless of size or complexity.

Key Features

- **Enhanced Diagnostics** – Automatically detect disconnected or miswired serial and IR ports
- **IPv6 and 802.1x** – Supports modern networking standards and features
- **Dual NIC** – Enables two discrete network interfaces for unrivaled security (available on NX-2200, NX-3200 and NX-4200)
- **High Performance Architecture, Flexible Programming Platform (NetLinx and Java)** – Supports a wide range of applications for today and tomorrow
- **Full Line Compatible (Backwards and Cross-Compatibility)** – Consistent across multiple rooms and devices

QUICK FACTS NETLIX NX-1200

Control Ports	ICSLan Ports	Input Power	Processor Speed	Onboard RAM	Rack Space (RU)
9	0	+12 VDC	1600 MIPS	512 MB	1 x 1/3

QUICK FACTS NETLIX NX-2200

Control Ports	ICSLan Ports	Input Power	Processor Speed	Onboard RAM	Rack Space (RU)
16	1	+12 VDC	1600 MIPS	512 MB	1

QUICK FACTS NETLIX NX-3200

Control Ports	ICSLan Ports	Input Power	Processor Speed	Onboard RAM	Rack Space (RU)
32	1	+12 VDC	1600 MIPS	512 MB	1

QUICK FACTS NETLIX NX-4200

Control Ports	ICSLan Ports	Input Power	Processor Speed	Onboard RAM	Rack Space (RU)
32	4	110/220 VAC and/or +12 VDC	1600 MIPS	1 GB	1

NETLIX NX-SERIES CONTROLLERS

NX-1200

For Smaller Single Room Solutions

Geared to meet the specific control and automation needs of smaller environments, the NX-1200 includes nine control ports for control of up to two third-party IR devices and one serial device, plus Ethernet and AxLink connectivity and a lightning-fast 1600 MIPS processor – all in a 1/3 rack-style enclosure. It's the ideal solution for less complex spaces.



NX-1200

NX-2200

For Medium-Size Room Solutions

Ideal for medium-sized rooms or multi-room applications such as home theaters, whole homes, hotel rooms and other environments, the NX-2200 includes as many as 16 distinct control ports and features Ethernet, AxLink and ICSNet connectivity, and a lightning-fast 1600 MIPS processor. It's perfect for mid-size spaces with moderate control requirements.



NX-2200

NX-3200

For Larger, Multiple Room Solutions

With the ability to integrate a larger number of devices, the NX-3200 can control a wide variety of components needed to support larger areas. It includes as many as 32 distinct control ports and features Ethernet, AxLink and ICSNet connectivity. With a lightning-fast 1600 MIPS processor, it's ideal for more complex, technology-rich installations.



NX-3200

NX-4200

For Large-Scale Solutions

The NX-4200 provides versatility with the ability to integrate the largest number of devices in the NX Series of Master Controllers.



NX-4200

It integrates up to 32 distinct control ports and features Ethernet, AxLink and ICSNet connectivity, along with 1GB of on-board RAM and a lightning-fast 1600 MIPS processor – all in a compact 1RU enclosure. The NX-4200 is ideal for the most demanding and technology rich commercial and residential applications.

FEATURE	NX-1200	NX-2200	NX-3200	NX-4200
AxLink Interface	1	1	2	2
10/100 LAN	Yes	Yes	Yes	Yes
10/100 ICSlan	No	1	1	4 PoE
Digital I/O Ports	4	4	8	8
RS232/422/485 Ports	1	1	2	2
RS232-only Ports	1	3	6	6
IR-Serial Output Ports	2	4	8	8
Relay Ports	0	4	8	8
IR Receiver Port	1	0	0	0
Processor Speed	1600 MIPS	1600 MIPS	1600 MIPS	1600 MIPS
On-Board RAM	512 MB	512 MB	512 MB	1 GB
Non-Volatile Memory	1 M	1 M	1 M	1 M
FLASH Memory	4 GB SDHC	8 GB SDHC	8 GB SDHC	8 GB SDHC
Rack Space	1 RU x 1/3	1 RU	1 RU	1 RU



NEW

New Models Available Soon
 Solecis 5x1 Multi-Format Digital Switcher
 Solecis 4x1 HDMI Digital Switcher
 Solecis 8x1 HDMI Digital Switcher

Share With the Room
 Install a Solecis at each table or desk of a classroom to share content with the entire room

Silent Running
 Fanless design provides quiet operation for room applications

Room to Expand
 Use one or more Solecis Switchers as a pre-switcher to expanded source connectivity in larger rooms



SDX-410-DX
 SDX-510M-DX
 SDX-810-DX

Simplified Laptop and AV Switching Affordable Enough To Be Installed In *Every* Huddle Space

Having the capability to easily switch between four, five or even eight guest laptops or other AV sources is a common need in small meeting rooms and huddle spaces, and previously required the expense of an all-in-one presentation switcher or dedicated switcher and controller. Solecis Digital Switchers combine a DXLink distance transport transmitter and digital switcher into a single, small form-factor device that can easily be installed and hidden under conference room tables. It can also be combined with other AMX products such as Enova DVX or DGX Switchers to expand source connectivity options in a variety of room applications.

Key Features

- **Cost Effective Switching Solution** – Offers an affordable solution for switching guest laptops and AV sources in huddle spaces and classrooms
- **Multiple Video, Audio, Ethernet and USB inputs** – All the conference table connections you need are included for a simplified AV switching experience

Quick Facts Solecis 5x1 Multi-Format Digital Switcher

Video Input	Video Output	Control	InstaGate Pro	HDCP Compliant	RPM Programmable
3 HDMI + 2 VGA	1 HDMI, 1 DXLink	External Button, NetLinX Native	Yes	Yes	Yes

Quick Facts Solecis 4x1 HDMI Digital Switcher

Video Input	Video Output	Control	InstaGate Pro	HDCP Compliant	RPM Programmable
4 HDMI	1 HDMI, 1 DXLink	External Button, NetLinX Native	Yes	Yes	Yes

Quick Facts Solecis 8x1 HDMI Digital Switcher

Video Input	Video Output	Control	InstaGate Pro	HDCP Compliant	RPM Programmable
8 HDMI	1 HDMI, 1 DXLink	External Button, NetLinX Native	Yes	Yes	Yes

- **Works with HydraPort Single Button or Keypad Modules** – Provides an elegant installation in a table or lectern
- **Built-in Support for AxLink Keypads** – Forwards keypad commands to a Central Controller over Ethernet eliminating the need for a separate AxLink cable run

NEW

ALERO

WEB CONFERENCING AUDIO MIXER

NEW



Finally a Simple Audio Mixer that is Specifically Designed for Web Conferencing

The Alero ALR-AEC-8 is a dedicated mixer for up to 8 microphones designed specifically with USB audio output for PC-based web conferencing applications such as Lync or Skype for use in medium to large meeting rooms. It actively adjusts audio levels and settings during use to deliver superior voice quality. The ALR-AEC-8 comes with an onboard web configuration tool that makes it extremely simple to setup.

Key Features

- 8-channel Automatic Microphone Mixer in a Single Enclosure
- USB Audio Interface for PC
- Onboard Web Configuration
- Actively Adjusts Audio Levels & Settings
- Includes Acoustic Echo Cancellation (AEC)
- Ensures Noise Reduction (NR) and Automatic Gain Control (AGC)
- Control by AMX over IP or contact closures
- Supports VTC and Audio Conferencing Systems

QUICK FACTS ALERO ALR-AEC-8

Input Channels	Output Channels	Individual Acoustic Echo Cancellers (AEC)	AEC Double-Talk Suppression	Noise Reduction	Automatic Microphone Mixing (AMM)	Dimensions (HWD)
8 mic 2 line 1 USB 1 mono VC in	4+1 (3) Balanced Line Out (1) Local Audio Balanced Line Out (1) USB Microphone Output to PC	8	0.0 to -50.0 dB	0-24 dB	Tunable for each output channel	1 3/4" x 17" x 9 1/8" (44.86 mm x 431.80 mm x 231.65 mm)

Alero Web Conferencing Audio Mixer

LOCATION:

Rack Mount, Shelf, Table

FRONT PANEL LED INDICATORS:

Power (1), Signal (8), Clip (8)

CONFIGURATION:

Onboard Web Configuration Tool

NEW 100 SERIES

enova DGX

THE NEXT GENERATION DOES EVEN MORE!

100 SERIES IS READY TO SUPPORT TODAY'S DEMANDING REQUIREMENTS, TOMORROW'S GROWING NEEDS

The entire line of Enova DGX Digital Media Switchers are fully capable of supporting 4K and Ultra High Definition (UHD) content.

ULTRA
4K
HD

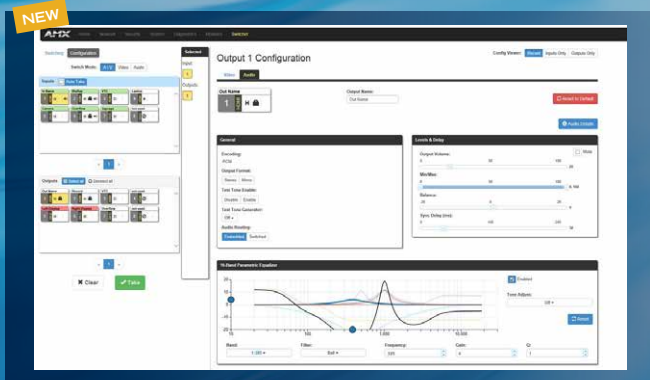


DGX 800

DGX 1600

DGX 3200

DGX 6400



DGX WEB CONFIGURATION

NEW ONBOARD WEB CONFIGURATION

Imagine using your handheld tablet to configure a complete Enova DGX system. Now you can with the new Onboard Web Configuration Tool that allows any network connected device to be used to setup and manage an Enova DGX system. DXLink endpoints can now be automatically configured and the entire system managed using a single IP address.

NEW AUDIO BREAKAWAY

Offers increased AV flexibility by combining and separating audio from video when combined with new Enova DGX Audio Switching Boards



DGX AUDIO SWITCHING BOARD SET

enova DGX 8/16

NEW Automatic DXLink Endpoint Setup

Simplifies installation by auto-discovering DXLink devices when they are connected to an Enova DGX*

NEW Audio Breakaway

Offers increased AV flexibility by combining and separating audio from video when combined with new Enova DGX Audio Switching Boards*

SmartScale® Technology

Automatically outputs video that is perfectly scaled for each connected display, preventing inferior video quality which occurs when sources and displays have different supported resolutions



DGX 8
DGX 16

NEW Built in NetLinX Controller

Enhanced security features include user-defined LDAP groups, IT-standard syslog security reporting, & secure machine-to-machine communication using HTTPS & SSH

InstaGate Pro® Technology

Easily integrate HDCP into system designs and enjoy hassle-free matrix switching to all compliant displays. No tools, no delays, and no key constraints – it just works

DXLink Twisted Pair Input and Output Boards

HDCP Compliant boards send audio, video, control, Ethernet and power over one standard twisted pair cable up to 200m – 100m to the matrix switcher and 100m after the matrix switcher

Combining Switching and Control Plus a Whole Lot More

The Enova DGX is the most reliable end-to-end analog, digital and HDMI/HDCP distribution solution on the market today. It also includes control, transcoding, scaling – all in a single box that's half the size of the competition.

Key Features

- NEW DGX System Onboard Web Configuration** – Greatly simplifies the setup and configuration of Enova DGX systems including DXLink endpoints in a single user-friendly interface*
- HDCP With Simplicity of Analog** – Hassle free plug and play operation eliminates the need for time consuming cumbersome work around tools to deal with HDCP key constraints and resolution incompatibilities
- All-In-One Control and Distribution Solution** – Powerful combination of modular matrix switcher, built-in controller, embedded Ethernet switch and video scaling on every output simplifies the end-to-end distribution and management of audio, video and control throughout multiple rooms

Quick Facts Enova DGX 8 System

Control	Max Inputs/Outputs	A/E Board Slots	Video	Audio	Integrated Technologies	Enclosure Size (HWD)
Integrated NetLinX Central Controller	8 x 8	1 in 1 out	HDMI, DVI, DisplayPort++, RGBHV, Component, S-Video, Composite	Dolby TrueHD, Dolby Digital, DTS-HD Master Audio, DTS, 2 CH though 8 CH L-PCM, Dolby Digital and DTS support up to 48kHz, 5.1 channels	DXLink Fiber Single Mode & Multimode Distribution, DXLink Twisted Pair Distribution, Embedded Ethernet Switch, HDCP Compliance	6 13/16" x 19" x 15" (4 RU)

Quick Facts Enova DGX 16 System

Control	Max Inputs/Outputs	A/E Board Slots	Video	Audio	Integrated Technologies	Enclosure Size (HWD)
Integrated NetLinX Central Controller	16 x 16	1 in 1 out	HDMI, DVI, DisplayPort++, RGBHV, Component, S-Video, Composite	Dolby TrueHD, Dolby Digital, DTS-HD Master Audio, DTS, 2 CH though 8 CH L-PCM, Dolby Digital and DTS support up to 48kHz, 5.1 channels	DXLink Fiber Single Mode & Multimode Distribution, DXLink Twisted Pair Distribution, Embedded Ethernet Switch, HDCP Compliance	6 13/16" x 19" x 15" (4 RU)

* Requires CPU upgrade to DGX 100 Series

Enova DGX 32/64

Boards for All

The new Enova DGX 32/64 Enclosures utilizes the same board sets as the Enova DGX 8/16 – lowering the total cost of ownership through reduction in spare/expansion inventory

NEW Audio Breakaway

Offers increased AV flexibility by combining and separating audio from video when combined with new Enova DGX Audio Switching Boards*

SmartScale® Technology

Automatically outputs video that is perfectly scaled for each connected display, preventing inferior video quality which occurs when sources and displays have different supported resolutions



DGX 32
DGX 64

NEW Automatic DXLink Endpoint Setup

Simplifies installation by auto-discovering DXLink devices when they are connected to an Enova DGX*

NEW Built in NetLinX Controller

Enhanced security features include user-defined LDAP groups, IT-standard syslog security reporting, & secure machine-to-machine communication using HTTPS & SSH

Enova DGX 64 + DXLink Fiber = 100x Greater Distribution

All the Features, Capabilities and Functionality of the Enova DGX Family Now in an I/O Range of 64x64 and Distribution up to 6 Miles

The new Enova DGX 32 and 64 Enclosures include all the features that have made the Enova DGX Series the leader in the world of digital media switchers including Integrated NetLinX Controller, redundant power supplies, SmartScale, InstaGate Pro, integrated Ethernet Switch and more.

Key Features

- NEW DGX System Onboard Web Configuration** – Greatly simplifies the setup and configuration of Enova DGX systems including DXLink endpoints in a single user-friendly interface*
- HDCP With Simplicity of Analog** – Hassle free plug and play operation eliminates the need for time consuming cumbersome work around tools to deal with HDCP key constraints and resolution incompatibilities
- All-In-One Control and Distribution Solution** – Powerful combination of modular matrix switcher, built-in controller, embedded Ethernet switch and video scaling on every output simplifies the end-to-end distribution and management of audio, video and control throughout multiple rooms

Quick Facts Enova DGX 32 System

Control	Max Inputs/Outputs	A/E Board Slots	Video	Audio	Integrated Technologies	Enclosure Size (HWD)
Integrated NetLinX Central Controller	32 x 32	1 in 1 out	HDMI, DVI, DisplayPort++, RGBHV, Component, S-Video, Composite	Dolby TrueHD, Dolby Digital, DTS-HD Master Audio, DTS, 2 CH though 8 CH L-PCM, Dolby Digital and DTS support up to 48kHz, 5.1 channels	DXLink Fiber Single Mode & Multimode Distribution, DXLink Twisted Pair Distribution, Embedded Ethernet Switch, HDCP Compliance	10 1/2" x 19" x 20 1/8" (6 RU)

Quick Facts Enova DGX 64 System

Control	Max Inputs/Outputs	A/E Board Slots	Video	Audio	Integrated Technologies	Enclosure Size (HWD)
Integrated NetLinX Central Controller	64 x 64	4 in 4 out	HDMI, DVI, DisplayPort++, RGBHV, Component, S-Video, Composite	Dolby TrueHD, Dolby Digital, DTS-HD Master Audio, DTS, 2 CH though 8 CH L-PCM, Dolby Digital and DTS support up to 48kHz, 5.1 channels	DXLink Fiber Single Mode & Multimode Distribution, DXLink Twisted Pair Distribution, Embedded Ethernet Switch, HDCP Compliance	22 11/16" x 19" x 20 1/8" (13 RU)

* Requires CPU upgrade to DGX 100 Series

enova DGX

Enova DGX, DXLink and DXLink Fiber boards are designed to fit in any size Enova DGX Enclosure. Visit AMX.com and use the Enova DGX configuration Tool to design your next digital media switcher, complete with compatible I/O boards and DXLink Twisted pair and Fiber Transmitters/Receivers.



Any Board Any Enclosure

Enova DGX Enclosures

All Enova DGX Enclosures are also equipped with an Integrated NetLinX NX Series Central Control Processor, Redundant Power Supplies, SmartScale, InstaGate Pro and Built-In Ethernet Switch

	ENOVA DGX 8	ENOVA DGX 16	ENOVA DGX 32	ENOVA DGX 64
Input / Output Board Slots (4 Connections / Board)	2 / 2	4 / 4	8 / 8	16 / 16
Audio Insert / Extract Board Input / Output Slots	1 / 1	1 / 1	1 / 1	4 / 4

BOARD	MODEL	CONNECTIONS	HDCP	DISTANCE	TRANSMISSION DATA RATE	TRANSMITTED EMBEDDED IR / RS-232 / NETLINX CONTROL	SMARTSCALE
Local							
HDMI Input Board	DGX-I-HDMI	4 HDMI	Yes	30.5 m / 100 ft*	n/a	n/a	n/a
DVI Input Board	DGX-I-DVI	4 DVI-D	Yes	30.5 m / 100 ft**	n/a	n/a	n/a
HDMI Output Board	DGX-O-HDMI	4 HDMI	Yes	15 m / 49 ft***	n/a	n/a	Yes
DVI Output Board	DGX-O-DVI	4 DVI-D	Yes	15 m / 49 ft***	n/a	n/a	Yes
Audio Insert / Extract Board	DGX-AIE	8 pluggable, dual three-position, terminal blocks each containing two single-ended stereo contacts	n/a	n/a	n/a	n/a	n/a
DXLink Twisted Pair							
Twisted Pair Input Board	DGX-I-DXL	4 RJ-45	Yes	100 m / 328 ft****	10.2 Gbps	Yes	n/a
Twisted Pair Output Board	DGX-O-DXL	4 RJ-45	Yes	100 m / 328 ft****	10.2 Gbps	Yes	Yes, at DXLink RX
DXLink Fiber, Multimode Fiber featuring Field Serviceable SFP Modules							
Multimode Fiber Input Board (Duplex)	DGX-I-DXF-MMD	4 LC Duplex	Yes	300 m / 984 ft	10 Gbps	Yes	n/a
Multimode Fiber Input Board (Simplex)	DGX-I-DXF-MMS	4 LC Simplex	Yes	300 m / 984 ft	10 Gbps	n/a	n/a
Multimode Fiber Output Board (Duplex)	DGX-O-DXF-MMD	4 LC Duplex	Yes	300 m / 984 ft	10 Gbps	Yes	Yes, at DXLink Fiber RX
Multimode Fiber Output Board (Simplex)	DGX-O-DXF-MMS	4 LC Simplex	Yes	300 m / 984 ft	10 Gbps	n/a	Yes, at DXLink Fiber RX
DXLink Fiber, Single Mode Fiber featuring Field Serviceable SFP Modules							
Single Mode Fiber Input Board (Duplex)	DGX-I-DXF-SMD	4 LC Duplex	Yes	10 Km / 32,808 ft / 6.21 miles	10 Gbps	Yes	n/a
Single Mode Fiber Input Board (Simplex)	DGX-I-DXF-SMS	4 LC Simplex	Yes	10 Km / 32,808 ft / 6.21 miles	10 Gbps	n/a	n/a
Single Mode Fiber Output Board (Duplex)	DGX-O-DXF-SMD	4 LC Duplex	Yes	10 Km / 32,808 ft / 6.21 miles	10 Gbps	Yes	Yes, at DXLink Fiber RX
Single Mode Fiber Output Board (Simplex)	DGX-O-DXF-SMS	4 LC Simplex	Yes	10 Km / 32,808 ft / 6.21 miles	10 Gbps	n/a	Yes, at DXLink Fiber RX

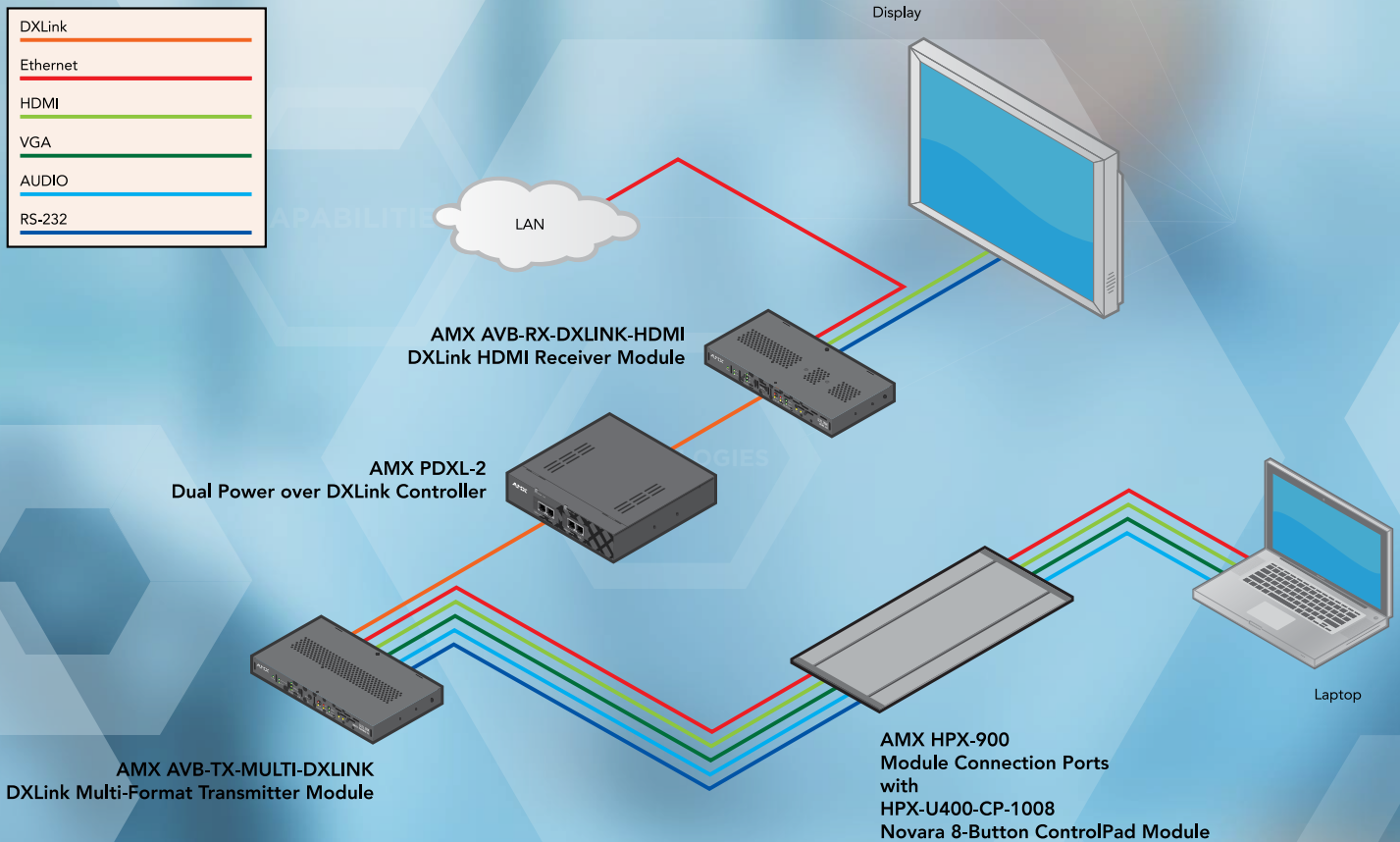
*Features Input Equalization, adaptive up to 100ft (30m) at 225 MHz (cable distance support dependent on cable type and signal format)
 **Features Input Equalization, adaptive up to 100ft (30m) at 165 MHz (cable distance support dependent on cable type and signal format)
 ***Dependent on cable quality and display
 ****For more details and helpful cabling information, please reference the AMX white paper titled "Cabling for Success with DXLink"

Bringing Enova to Every Space

There are often cost and installation challenges that can make implementation of a traditional Enova system challenging. To bring Enova to every space, here is a simple, cost-effective solution that offers all the benefits of a full Enova system. Using the Enova DXLink transmitter and receiver in this configuration means that a simple Novara ControlPad can be configured to control the display. The serial commands are passed from the DXLink transmitter to the receiver without the requirement for any additional control. Using DXLink technology, all the connections required for a typical laptop are connected between the table and the display using a single low-cost cable which means a much simpler, trouble-free installation. For an even better user experience, a Modero S

Series Touch Panel such as the MST-431 could be used in conjunction with a NetLink processor.

To switch the system on, simply select the 'ON' button from the ControlPad. The ControlPad also provides the ability to adjust display volume and switch source inputs on the display. The DXLink Transmitter will conveniently auto switch between digital and analogue inputs, with the digital input always having priority. Thanks to AMX exclusive SmartScale technology, the image on the display will always look its best, regardless of the input type or resolution. And using our Rapid Project Maker configuration tool, there's never been an easier way to bring Enova to every space.



enova

Field Serviceable Fiber Modules

Easily remove and replace SFP modules in the field

HDCP Compliant

Distribute, convert, and scale HDMI signals with full HDCP compliance without interruption

Fiber Your Way

DXLink Fiber TX/RX and I/O Boards are available in single mode or multimode; simplex or duplex to meet the needs of any installation

Secure and Isolated

Fiber inherently provides extra security and electrical isolation making it the transport method of choice for many mission-critical secure environments

InstaGate Pro[®] Technology

Easily integrate HDCP into system designs and enjoy hassle-free matrix switching to all compliant displays. No tools, no delays, and no key constraints – it just works

SmartScale[®] Technology

Automatically outputs video that is perfectly scaled for each connected display, preventing inferior video quality which occurs when sources and displays have different supported resolutions



FIBER | Great Distances at High Speeds

Use the Enova DGX DXLink Fiber Input and Output boards in conjunction with DXLink Fiber Transmitters and Receivers to send audio, video, control and Ethernet over fiber up to 10 Km at 10 Gbps that's the fastest optical transport data rate in the industry. These DXLink Fiber solutions are available in single mode or multimode and simplex or duplex to provide exactly what any facility requires.

Compatible with all Enova DGX Enclosures including the 8, 16, 32 and 64 it's easier than ever to design and expand any system. The Enova DGX system provides end-to-end distribution of analog and digital AV (including pure, uncompressed HDMI with HDCP compliance) throughout any corporate or mission-critical campus. The compatible Enova DGX Digital Media Enclosures have integrated NetLinX, and the duplex versions of DXLink Fiber extend that native NetLinX to control end-point devices.

Key Features

- **HDCP With Simplicity of Analog** – Hassle free plug and play operation eliminates the need for time consuming cumbersome work around tools to deal with HDCP key constraints and resolution incompatibilities
- **Campus-Wide Signal Distribution** – Distribute video between buildings without constraints or quality loss
- **Maximum Security** – Attract customers who demand the enhanced security transport of fiber

Quick Facts DXLink Fiber Transmitters

DXLink Transport Connector	Video Connectors	Audio Connectors	Control Connectors	Video	Audio	Integrated Technologies
4 LC DUPLEX OR 4 LC SIMPLEX	HD-15, 2 HDMI (1 Input, 1 Local Out that Mirrors Transmitted Output)	3.5mm Stereo, RCA	2 Phoenix-style, 3.5mm Stereo, USB B, RJ-45	HDMI, DVI, DisplayPort+++, RGBHV, Component, S-Video, Composite	Dolby TrueHD, Dolby Digital, DTS-HD Master Audio, DTS, L-PCM, Analog Stereo	HDCP Compliance, Embedded Ethernet Distribution, Embedded NetLinX Control

Quick Facts DXLink Fiber Receivers

DXLink Transport Connector	Video Connectors	Audio Connectors	Control Connectors	Video	Audio	Integrated Technologies
4 LC DUPLEX OR 4 LC SIMPLEX	HDMI	3.5mm Stereo	2 Phoenix-style, 3.5mm Stereo, USB B, RJ-45	HDMI, DVI	Dolby TrueHD, Dolby Digital, DTS-HD Master Audio, DTS, L-PCM, Analog Stereo	SmartScale, Embedded Ethernet Distribution, Embedded NetLinX Control, HDCP Compliance

Quick Facts DXLink Fiber Input Boards

DXLink Transport Connector	Video Connectors	Audio Connectors
4 LC DUPLEX OR 4 LC SIMPLEX	Video from DXLink Fiber Transmitters	Audio from DXLink Fiber Transmitters

Quick Facts DXLink Fiber Output Boards

DXLink Transport Connector	Video Connectors	Audio Connectors
4 LC DUPLEX OR 4 LC SIMPLEX	Video to DXLink Fiber Receivers	Audio to DXLink Fiber Receivers



Send HDMI signals up to 100 meters

Extend the reach of uncompressed HDMI signals far beyond the capabilities of typical HDMI cabling

Standard Twisted Pair

Save time and effort in installation by leveraging pre-existing cost effective twisted pair cable

Hot Swappable Video Input / Output Boards

Easily add or replace I/O boards at any time after deployment - the system automatically recognizes the new configuration and activates the boards

USB Support

Pass keyboard and mouse USB signals to control a remote computer



Built-in Control Ports in the Transmitters and Receivers

Control the connected source or display using the built-in IR or RS-232 control ports

NEW

New Models Available Soon

- HDMI Input Board
- DXLink Input Board
- DXLink Output Board
- DXLink HDMI Receiver

Only One Twisted Pair Cable

Use the Enova DGX DXLink Input and Output boards in conjunction with the DXLink Transmitters and Receivers to send audio, video, control, Ethernet and power over a single twisted pair cable up to 200m – 100m to the matrix switcher and 100m after the matrix switcher. Expand the Enova DGX input and output size by increments of 4 using the DXLink Input and Output boards. The Enova DGX system provides end-to-end distribution of analog, digital and HDMI/HDCP signals plus control signals throughout a residence or commercial facility. Ideal for environments that demand the highest quality video be shared between rooms or even buildings.

Key Features

- **HDCP With Simplicity of Analog** – Hassle free plug and play operation eliminates the need for time consuming cumbersome work around tools to deal with HDCP key constraints and resolution incompatibilities
- **All-In-One Control and Distribution Solution** – Power combination of modular matrix switcher, built-in controller, embedded Ethernet switch and video scaling on every output simplifies the end-to-end distribution and management of audio, video and control throughout multiple rooms
- **Fast Easy Installation** – When used with the DGX DXLink Input/Output boards, the DXLink Transmitters and Receivers are powered over the single category cable connection eliminating additional wiring hassles and need for additional power outlets.

Quick Facts DXLink HDMI Receiver

DXLink Transport Connector	Video Connectors	Audio Connectors	Control Connectors	Video	Audio	Integrated Technologies
DXLINK RJ-45	HDMI	3.5mm Stereo	2 Phoenix-style, 3.5mm Stereo, USB A, RJ-45 Ethernet	HDMI, DVI	Dolby TrueHD, Dolby Digital, DTS-HD Master Audio, DTS, L-PCM, 2 CH though 8 CH L-PCM, Dolby Digital and DTS support up to 48kHz, 5.1 channels	SmartScale®, DXLink Twisted Pair Distribution, Power over DXLink, Embedded Ethernet Distribution, Embedded NetLinX Control, HDCP Compliance

Quick Facts DXLink Multi-Format Transmitters

Video Connectors	Audio Connectors	Control Connectors	DXLink Transport Connector	Video	Audio	Integrated Technologies
HDMI, HD-15	3.5mm Stereo (TX Module also has RCA)	2 Phoenix-style, 3.5mm Stereo, USB B (TX Module also has RJ-45 Ethernet)	DXLink RJ-45	HDMI, DVI, DisplayPort++, RGBHV, Component, S-Video, Composite	Dolby TrueHD, Dolby Digital, DTS-HD Master Audio, DTS, L-PCM, 2 CH though 8 CH L-PCM, Dolby Digital and DTS support up to 48kHz, 5.1 channels	DXLink Twisted Pair Distribution, Power over DXLink, HDCP Compliance (TX Module also has Embedded Ethernet Distribution, Embedded NetLinX Control)

**Goes the Distance**

Transmit 4K HDMI across the hall, down the room, between floors or other extended distances

Easy Install

Utilizes standard, single gang boxes to fit in décor-style wallplates and floor boxes for quicker installs

Powered Over DXLink

There's no need for a standalone power cable - just plug in your DXLink cable and you are ready to go



Decor Style DXLink Multi-Format Wallplate Transmitters = More Install Options

The DXLink Multi-Format Decor Style Wallplate Transmitter sends analog or digital video including HDMI/HDCP, along with embedded audio or supplemental analog audio up to 100 meters to an Enova DGX Digital Media Switcher, Enova DVX All-In-One Presentation Switcher (DVX-3255/3256HD/DVX-2255HD), or directly to a DXLink Receiver. It receives power over twisted pair cable from the Enova DGX, compatible Enova DVX (3255/3256HD or 2255HD), PS-POE-AT-TC High Power over Ethernet (PoE) Injector, or the new Dual Power Over DXLink Controller (PDXL-2). These wallplates feature a multi-format analog port to support legacy devices and an HDMI port to support newer digital devices.

A single DXLink device can also be powered by the new DXLink-compatible PoE injector or up to 2 DXLink devices by the Dual Power over DXLink Controller. Note that, other third party PoE injectors are not supported for use with DXLink.

Key Features

- **Only One Cable** – Send audio and video, while passing power over one twisted pair cable
- **Multi-Format Analog Port and HDMI Port** – Supports legacy analog signals - RGBHV, Component, S-Video, and Composite, and digital HDMI/HDCP, DisplayPort++ and DVI signals
- **Send HDMI signals up to 100 meters** – Extend the reach of HDMI signals far beyond the capabilities of typical HDMI cabling

DXLink HDMI Wallplate Transmitter

The new DXLink 4K HDMI Wallplate Transmitter accepts a 4K signal input from devices like laptops via a HDMI connection. It transports video with embedded audio to an Enova DGX Digital Media Switcher or 4K compatible DXLink Receivers and is powered over DXLink to ease the installation. Its single gang size fits in Décor-style wallplates or floorboxes for a standard, simplified installation.

Key Features

- **4K and Ultra High Definition (UHD) Support** – Experience high-quality video resolution from 4K devices that can be located a long distance from the 4K display
- **Send HDMI Signals Long Distances** – Extend the reach of the HDMI signals far beyond the capabilities of typical HDMI cabling
- **Standard Twisted Pair Cable Supported** – Save time and effort in installation by leveraging cost effective twisted pair cable
- **Simplified Installation** – Single Gang fits in Decor-style WallPlates or floor boxes for a simpler installation
- **Power over DXLink-enabled** – Designed for use with Enova DGX systems with DXLink inputs, an AMX High Power PoE Injector (PS-POE-AT-TC) or an AMX Dual Power Over DXLink Controller (PDXL2) to provide remotely-located power over DXLink

EPICA DGX 288

FIBER

Customizable, Large-scale, Single Strand, Single/Multimode

The Epica DGX 288 is a modular fiber optic matrix switcher designed to transport uncompressed video, including HDMI with HDCP, and embedded audio over single strand multimode or single mode fiber.

KEY FEATURES

- **HDMI/HDCP Switching with Simplicity of Analog** – End-to-end distribution of HDMI/HDCP without interruption or key constraints using InstaGate Pro Technology
- **4K and Ultra High Definition (UHD) Content Ready** – Designed to support future resolutions for years to come
- **Industry Leading Data Rate** – DXLink is leading the way with an optical transport rate of 10 Gbps
- **Field Serviceable SFP Fiber Modules** – Reduces downtime by allow a single module to be replaced while other inputs and outputs (even those on the same board) continue to operate without interruption
- **Analog to Digital Video Conversion with Scaled Outputs** – Converts any source signal to digital and uses SmartScale Technology to automatically output video that is perfectly scaled for each connected display
- **Secure and Isolated** – Fiber inherently provides extra security and electrical isolation making it the transport method of choice for many mission-critical secure environments
- **HDCP Compliance Over Fiber** – Use in conjunction with DXLink Fiber Transmitters and Receivers to send video and audio up to 20 kilometers on single mode fiber and 600 meters on multimode fiber (10 kilometers to the matrix switcher and 10 kilometers after the matrix switcher with single mode fiber, and 300 meters to the matrix switcher and 300 meters after the matrix switcher on multimode fiber)
- **Fully Redundant Power Supplies** – With independent power paths for maximum reliability



ICSLAN DEVICE CONTROL BOXES

Single Cable

Onboard Power over Ethernet (PoE) eliminates the need for a power source at the install location.

Programming Made Simple

Programming is identical to any other device ports on the controller.

Future Proof

Provides a future proof solution to add ports anywhere.

Easily Deployed

Configuration tools make ICSLan Device Control Boxes easy to deploy.

Sleek and Svelte

Compact design makes it easy to hide for a clean installation.



Add Control Ports Anywhere All Over Ethernet

Ethernet is the industry standard for connecting devices and ICSLan Device Control Boxes make it easy to introduce control to projectors and other equipment that lack Ethernet connectivity. Oftentimes, these devices are located remote distances from the Controller or it may be necessary to expand the number of ports on a fully populated controller. ICSLan Device Control Boxes are ideal for a wide range of residential applications with devices that lack Ethernet connectivity.

Key Features

- **New Markets** – Offers a great opportunity to sell to markets that seemed previously unapproachable because of the cost of having a Controller in every room
- **Larger Facilities** – The ability to market to homeowners with larger residences with many rooms requiring control may now be available
- **Cost Effective** – Offers an extremely cost effective solution for users needing to expand their control capabilities

QUICK FACTS ICSLAN DEVICE CONTROL BOX

CONNECTIVITY OPTIONS

ICSLan Device Control Boxes are available in five models to meet the connectivity needs of just about any application. Just install the model that contains the appropriate connection type for your device, and you'll have complete control of it over your Ethernet network.

ICSLAN PRODUCT DETAILS

EXB-COM2	Serial Interface, 2 Ports
EXB-I/O8	Input/Output Interface, 8 Channels
EXB-IRS4	IR/S Interface, 4 IR/S and 4 Inputs
EXB-REL8	Relay Interface, 8 Channels
EXB-MP1	Multi-Port, 1 COM, 1 IR/S, 2 I/O, 1 IR RX

NETLINX POWER DISTRIBUTION UNIT

Power Management of Connected Devices

Reduces standby energy usage (vampire power/phantom load).

Built-in Power Current

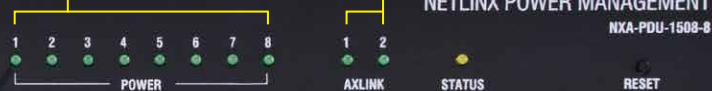
Sensing on Each AC Outlet
Makes it easy to tell if a device is powered on or off.

Individually Controlled Outlets

Allows a remote reboot for devices in the rack reducing on-site service calls.

Switched and Monitored

AxLink Bus Strips
Allows power and switching of AxLink or 12V powered devices (in banks of four).



Control and Reset Rack Power Remotely

The Power Distribution Unit (PDU) allows you to control the rack as well as control the room. With 8 individually monitored and controlled AC outlets, built-in 12 Volt power supply, 2 sets of 4 AxLink Bus Strips, and power monitoring for each outlet, the PDU adds a basic level of control by allowing remote reset of devices via a power cycle. With Native NetLinx control over AxLink, it's also easy to integrate with Resource Management Suite (RMS) software.

Key Features

- Introduces Control at the rack level for Dealers
- Combines power supply and power distribution into one device saving equipment and installation costs
- Provides easy method to add an environmentally friendly Green element to an installation
- AMX PDU now supported in RPM. Power on and shut off devices connected to the PDU outlets within the RPM macros.

QUICK FACTS NXA-PDU-1508-8

Dimensions (HWD)	AC Ports	AxLink Ports
1 3/16" x 17" x 9 11/16" (2.97cm x 43.18cm x 9.66cm)	1 INPUT - 110 - 220VAC 8 OUTPUTS - 110-220VAC	1 AXLINK MASTER PORT 8 AXLINK DEVICE PORTS (2 BANKS OF 4)

NetLinx Power Management Family

LOCATION:

Rack Mount, Shelf, Table

EXTERNAL BUTTONS:

1 Reset

CONFIGURATION:

8-position DIP switch sets the AxLink device address for the unit



NXA-PDU-1508-8 | 8 OUTLET PDU

SMART BUILDINGS

START WITH SMART AMX TECHNOLOGIES

Leveraging Seamless Integration with BMS/BAS systems, RMS, facility scheduling and Network Media for a holistic enterprise solution

Bridging the gap between technology and building/energy management systems, AMX Smart Building Solutions interface with building systems including access control, CCTV/security, fire safety, HVAC, digital signage, mass notification, lighting control and power management. Seamless integration is enabled through industry-standard network communication protocols like KNX®; protocol translators including Tridium® and FieldServer Technologies®, and open standards solutions like oBIX®. AMX has the hardware and software solutions to satisfy the needs of building owners, occupants, facility managers and IT professionals.

Building-wide Resource Management/Scheduling – Our award winning Resource Management Suite software is the primary connection with the existing building management backbone to provide a seamless way to see and manage ‘IT’ all.

AV Room Automation – Our Enova DVX is a all-in-one presentation switcher designed to manage all the technologies in any space.

Video Distribution – Our Enova DGX delivers high definition digital video content throughout a facility.

Network Media – Vision² breaks through the distance barriers of AV infrastructures to share content around the world.

Fire / Life Safety

Security / Access Control

HVAC

Facility / Power Management

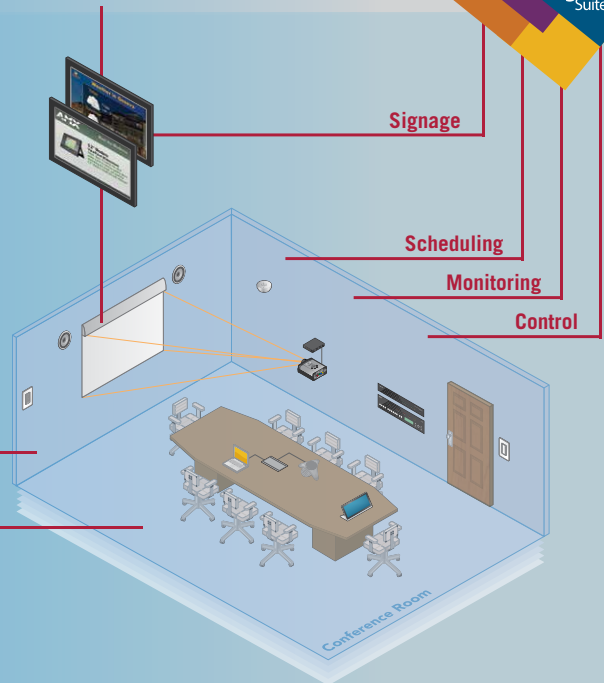
Daylight Management

Occupancy Sensor

Lighting

BUILDING MANAGEMENT SYSTEM

Resource Management Suite



Smart Sensing
The Clear Connect Occupancy Sensor ensures maximum energy efficiency by accurately sensing when someone is in the room and when they're not to turn lights on and off accordingly.



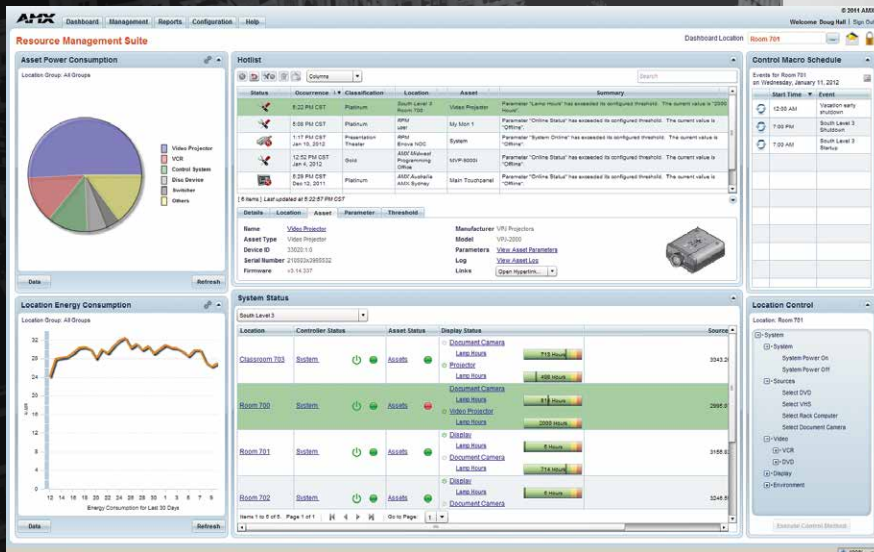
CCD-OCR2B-P | CLEAR CONNECT™ RADIO POWR SAVR™ CEILING MOUNT OCCUPANCY/VACANCY SENSOR

RMS ENTERPRISE IS NOW IN THE CLOUD



Introducing the virtually maintenance-free, monthly subscription based RMS Enterprise solution hosted from the Cloud – all with seamless integration with RPM

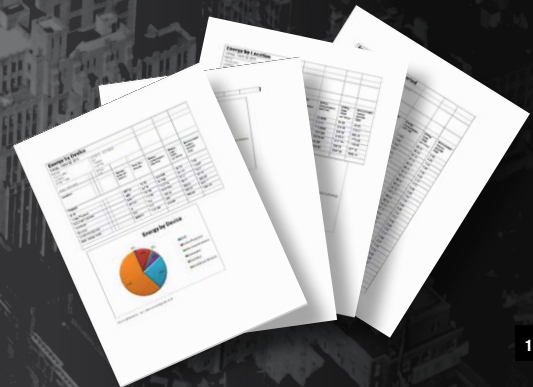
RMS Enterprise provides IT-like remote management capabilities for AV assets and building systems and features a user-friendly dashboard making it easy to centralize the management and



The new AMX Services portal – manage all your RMS cloud hosted services.

- **Visual Bar Graphs** – Multicolor Graphics Elements with user defined stages for Device Status
- **Hotlists** – Priority Levels and System Filtering – Push important rooms and devices to the top of the list
- **Energy Dashboard Widget** – Display Energy Consumption over time for locations and assets by device type
- **Reports** – Pie Charts, Graphs with Multicolor Graphical Elements

monitoring of AV equipment, lights, HVAC and other building functions. End users can proactively maintain AV devices before a bulb burns out or receive immediate notification when a display goes offline. IT and AV managers can improve their response times and end users will reduce the amount of lost productivity while waiting for meeting room equipment to function.



RMS ENTERPRISE SERVER SOFTWARE



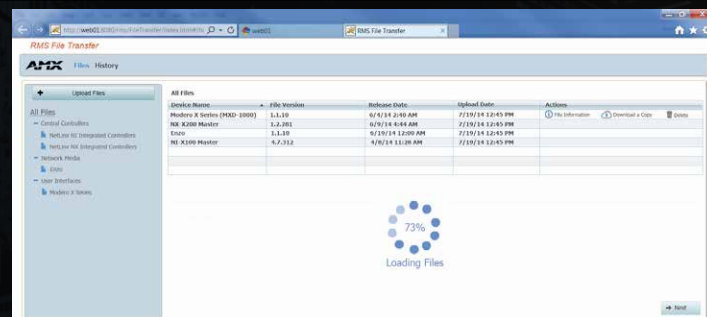
RMS Enterprise is a scalable client/server based software solution for IT & AV technicians that provides remote management and scheduling capabilities for AV systems and building assets.

RMS Enterprise supports a wide variety of external scheduling applications. With RMS 4, users can even grab an open meeting room via the touch panel outside – or even inside – the room.



- Minimize help desk calls and simplify troubleshooting by centrally managing AV systems just like IT systems.
- Improve productivity by enabling users to check availability and schedule rooms from their desks.
- View room schedules from smartphones, tablets and other mobile devices.

NEW RMS Enterprise Update Manager

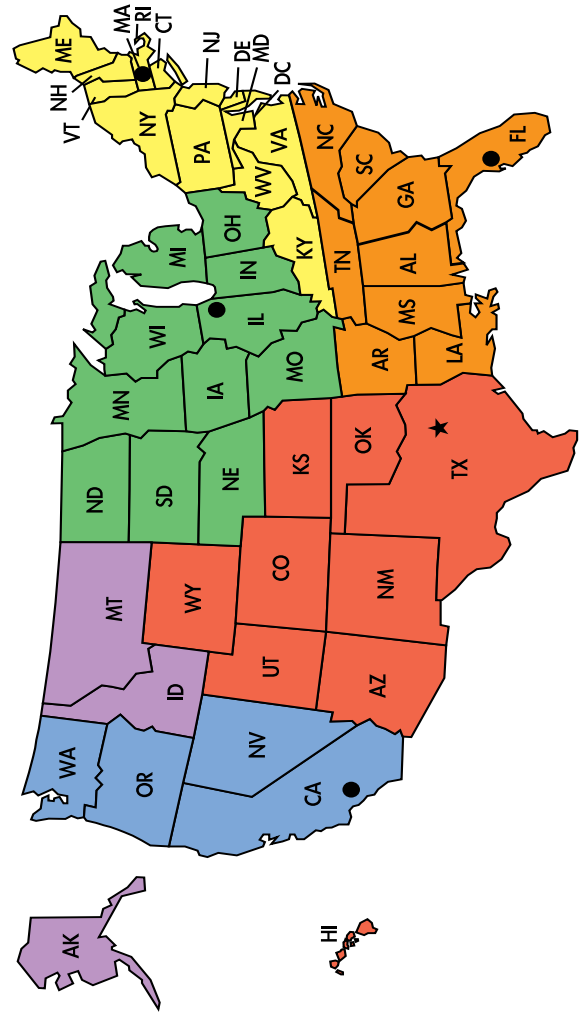
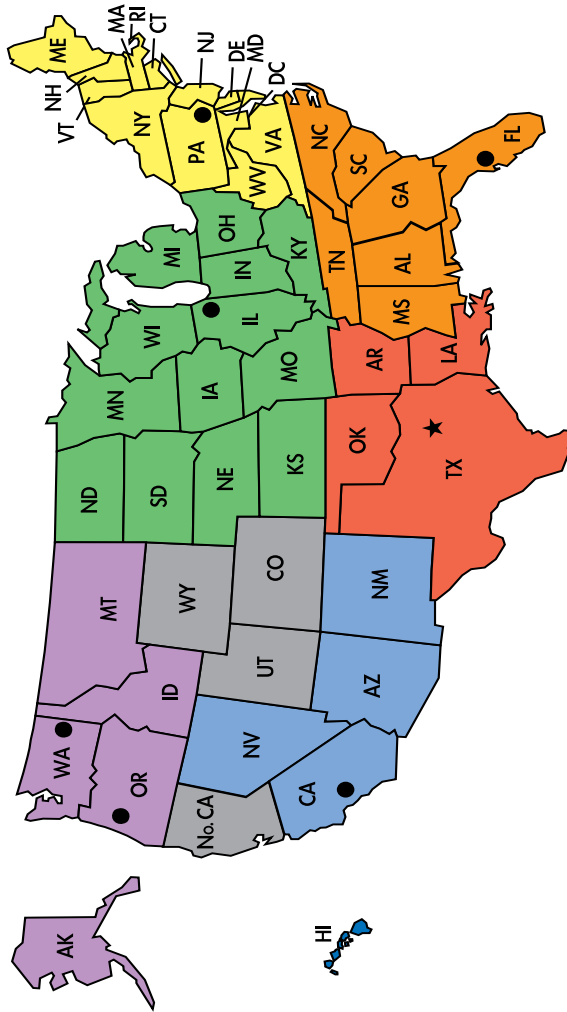


Just imagine – technology managers now have the ability to stage new AMX firmware, quickly identify AMX devices that require updating and mass deploy the new firmware simultaneously!

	PRICING	FREE TRIAL	SOFTWARE MAINTENANCE & UPDATES	TECHNICAL SUPPORT	QR SCHEDULING	SCHEDULING	SNMP	AMX MANAGED SERVICES & UPDATES
RMS ENTERPRISE (SERVER SOFTWARE)	One-Time Purchase Installed on Your Server	90 days	Software Maintenance Available	1st Year Included	Integration with Exchange & Lotus Notes Included	Integration with Exchange & Lotus Notes Included	Full Support	1st Year Customer Managed Software Maintenance Included
RMS ENTERPRISE (HOSTED CLOUD SERVICE)	Monthly Subscription with No Contract	30 days	Software Maintenance and Updates Included	Included	N/A	N/A	N/A	Included

US Commercial Sales Contacts

US Residential Sales Contacts



<p>Muckle Sales Beaverton, OR 503.620.0444</p>	<p>AMX Northwest Cheney, WA 303.880.0197</p>	<p>AMX West Costa Mesa, CA 800.562.6956</p>	<p>AMX South Central Richardson, TX 800.222.0193</p>	<p>AMX Midwest Chicago, IL 630.621.9207</p>	<p>AMX Northeast Plymouth Meeting, PA 800.462.6946</p>	<p>AMX Southeast Tampa, FL 800.274.5666</p>
---------------------------------------------------------------	-------------------------------------------------------------	------------------------------------------------------------	---------------------------------------------------------------------	------------------------------------------------------------	-----------------------------------------------------------------------	------------------------------------------------------------

<p>Inside Sales John Watts 469.624.6888 Richardson, TX</p>	<p>West Steve Changizian 951.316.2250 Corona, CA</p>	<p>South Central Rob Choate 469.624.6724 Richardson, TX</p>	<p>Midwest Jose Bedolla 312.607.1700 Chicago, IL</p>	<p>Northeast Bob Beckett 617.513.7983 Franklin, MA</p>	<p>Southeast Chad Heffernan 786.280.2082 Tampa, FL</p>
-------------------------------------------------------------------------------	-------------------------------------------------------------------------	--------------------------------------------------------------------------------	-------------------------------------------------------------------------	---------------------------------------------------------------------------	---------------------------------------------------------------------------

Global Sales Offices

AFRICA

North Africa
(Algeria, Morocco, Tunisia)
AMX France
+33.1.47.24.0501
www.amx.com

South Africa
(Republic of South Africa, Angola, Botswana,
Kenya, Lesotho, Malawi, Mozambique, Namibia,
Swaziland, Tanzania, Zambia, Zimbabwe)
Peripheral Vision CC
+27.11.840.0860
www.peripheralvision.co.za

ASIA & THE PACIFIC RIM

Australia and New Zealand
AMX Australia
+61.7.5531.3103
www.amx.com/aunz

AMX New Zealand
+64.9.415.2257
www.amx.com/aunz

North Asia
(China, Hong Kong, Korea, Taiwan)
AMX Asia Limited (Hong Kong)
+852.3422.8732/42
www.amxasia.com

AMX Asia Limited (China - Beijing)
+86.10.84464880
www.amxasia.com

AMX Asia Limited (China - GuangZhou)
+86.20.3758.2820
www.amxasia.com

AMX Asia Limited (China - Shanghai)
+86.21.5301.7233
www.amxasia.com

AMX Asia Limited (Korea)
+82.2.523.0771
www.amxasia.com

AMX Asia Limited (Taiwan)
+886.2.2729.5180
www.amxasia.com

Southeast Asia
(Singapore, Brunei, Cambodia, Indonesia,
Laos, Malaysia, Myanmar, Philippines,
Thailand, Vietnam)
AMX Asia Pacific Pte. Ltd.
+65.6846.7960
www.amx.com

India
Harman International (India) Pvt. Ltd.
+91.80.43306300
www.harman.in

Japan
Electori Co. LTD.
+81.3.3530.6190
www.electori.co.jp

CANADA

AMX Canada
+1.514.695.4883
www.amx.ca

EUROPE

Belgium, Luxembourg
AMX Belgium
+32.16.40.6999
www.amx.com

Czech Republic, Poland, Hungary, Slovakia
AMX Central Europe
+420.777.675.869
www.amx.com

France
AMX France
+33.1.47.24.0501
www.amx.com

Germany, Austria
AMX GmbH
+49.7024.4080.0
www.amx.de

Italy
Intermark Sistemi S.R.L.
+39.06.520.5835
www.intermark.it

The Netherlands
AMX Netherlands
+31.316.224.884
www.amx.com

Russia, Ukraine
AMX Russia
+7.495.724.46.49
www.amx.ru

Spain, Portugal
AMX Iberia
+34.954.189.006
www.amx.com.es

Switzerland
AROCOM AG
+41.61.377.8797
www.arocom.ch

Turkey
ADEC Teknoloji AS
+90.212.290.3660
www.adeccom.tr

United Kingdom
(England, Northern Ireland, Scotland, Wales,
Albania, Belarus, Bosnia and Herzegovina,
Bulgaria, Croatia, Estonia, Greece, Kosovo,
Latvia, Lithuania, Macedonia, Moldavia,
Montenegro, Romania, Serbia, Slovenia)
AMX Europe
+44.1.904.343.100
www.amx.com

AMX London
+44.207.652.9450
www.amx.com

Norway, Sweden, Denmark, Finland
AMX Nordic
+46.31.723.2123
www.amx.com

LATIN AMERICA

Argentina
TodoMusica S.A.
+54.11.5544.8000
www.todomusica.com.ar

Bolivia
IEE Ltda.
+591.2.220.0713

Brazil
HARMAN do Brasil LTDA
+55.11.98698.0155
+55.51.3479.4088
www.amx.com

Colombia
Audio Concept
+57.2.704.6254

Dominican Republic
Musitempo
+809.548.6664

Ecuador
Prosonido Cia. Ltda.
+593.2.244.5020

Guatemala
Inversiones W.G., S.A.
+502.2367.3845

Mexico
AMX Soluciones Tecnologicas, S.A. de C.V.
d/b/a **AMX Mexico**
+52.55.5280.4800
www.amxmexico.com

Panama
Pro Data Technologies Corp.
+507.262.2412

Paraguay
Esmart Sociedad de Responsabilidad Ltda.
+595.21.677.491

Venezuela
Media C.A.
+58.212.319.5999

Audio Concept
+58.212.400.9500

For all other countries in Latin America
and the Caribbean:
HARMAN International Industries
+1.787.706.7602
www.harman.com

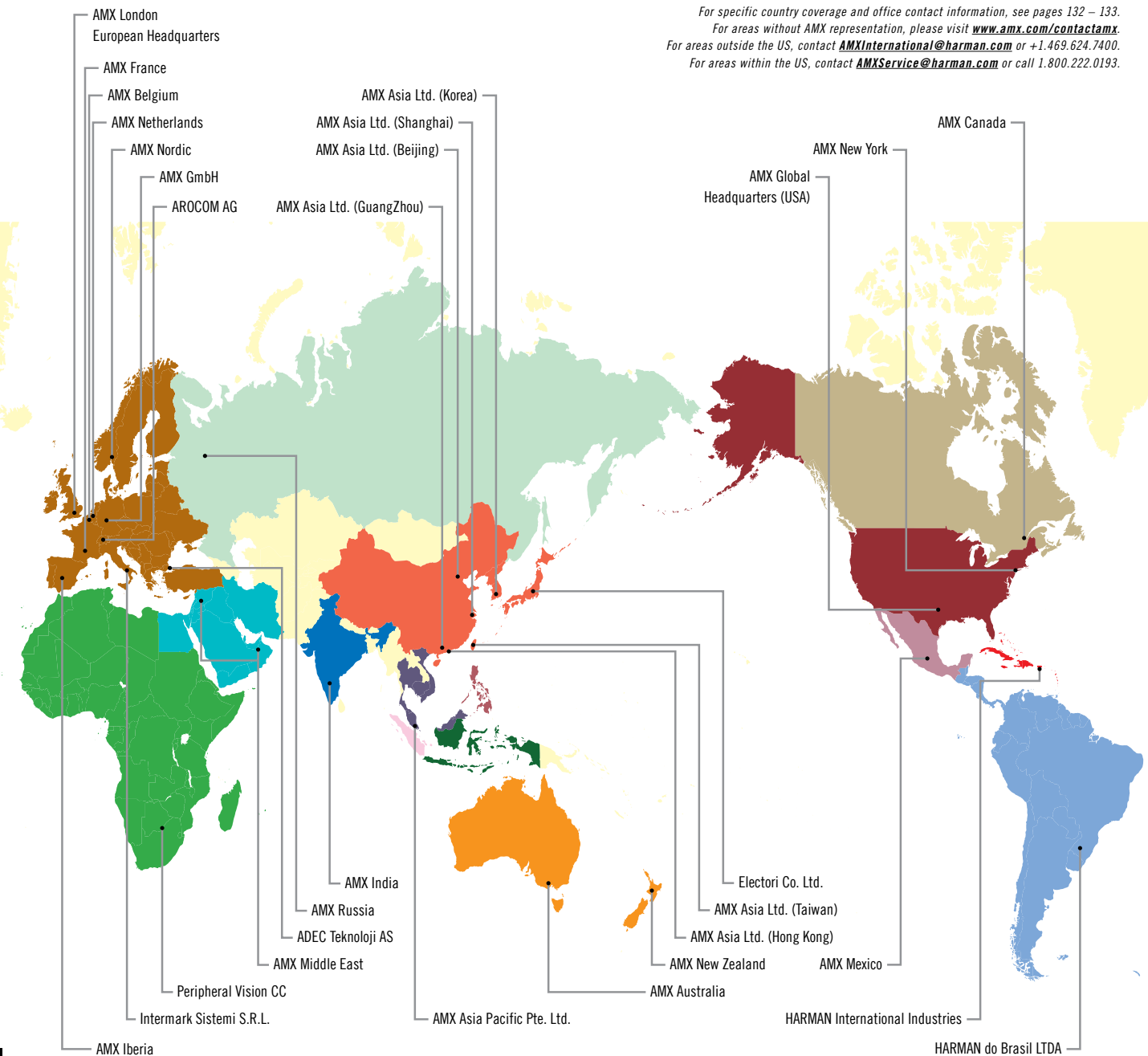
MIDDLE EAST

(Lebanon, United Arab Emirates,
Kingdom of Saudi Arabia, Kuwait, Qatar,
Oman, Yemen, Bahrain, Jordan, Egypt,
Pakistan)
AMX Middle East (AMX-me)
+971.4.204.5690
www.amxme.com

AMX Lebanon
+961.9.901120
www.amxme.com

For a map view of these offices, see pages 134 – 135.
For additional contact details, please visit
www.amx.com/contactamx. For dealer information
and/or areas not represented by these offices outside
the US, contact AMXInternational@harman.com or
+1.469.624.7400. For areas within the US, contact
AMXService@harman.com or 1.800.222.0193.

Global Sales Offices



For specific country coverage and office contact information, see pages 132 – 133.
 For areas without AMX representation, please visit www.amx.com/contactamx.
 For areas outside the US, contact AMXInternational@harman.com or +1.469.624.7400.
 For areas within the US, contact AMXService@harman.com or call 1.800.222.0193.



AMX | LONDON



AMX | NEW YORK



AMX | DALLAS



AMX | SAN FRANCISCO

AMX SHOWROOMS ARE YOUR SHOWROOMS

In addition to welcoming you to visit any of our direct sales and support offices around the world, we also invite you to visit any of our full service Showrooms located in Dallas, New York, San Francisco and London. Each of our Showrooms offers visitors the ability to experience an interactive demonstration of more than 350 AMX products and includes several examples of AMX technology at work. Additionally, each of our Showrooms includes a full-size, fully integrated boardroom with video conferencing capabilities as well as a full-time AMX University Training Center.

Please contact any of our Showrooms directly for hours of operation, to request a demonstration and tour, inquire about AMX University training, or schedule a meeting with your customers.

- See technology demonstrations
- Invite customers to see over 350+ products
- Schedule videoconference meetings
- Attend AMX University training



AMX | NETHERLANDS



AMX | FRANCE



AMX | GERMANY



AMX | RUSSIA



HARMAN Professional Services

How do we make a more successful installation?

Featuring top performing technologies that work together to create highly scalable solutions, HARMAN brands bring the highest quality of audio, lighting, and automated controls to your installation and provide the best communication and entertainment system possible.

At HARMAN, we understand the needs of the AV installation market and dedicate ourselves to being more than an manufacturer; we are part of your team. HARMAN Provides complete solutions while devoting our passion and commitment to your success.

PRODUCT ASSURANCE SERVICES



Extended Warranty

Extend the warranty coverage of your entire installation to a maximum of 5 years. Adding an Extended Warranty to your service package effectively creates a set budget for all repairs, which includes parts, labor, and return shipping.



1yr. Advanced Replacements

Extend the duration of our typical Advanced Replacement period to encompass the entire first year of your installation. You don't have to wait for equipment repairs, we immediately ship you a replacement. Just ship the faulty item back when your new one arrives.



Hot Swap Backups

Minimize system downtime and decrease the cost of purchasing spare equipment by having HARMAN-owned backups for your critical equipment consigned to your venue. Especially useful when your location prevents quick repair or replacement.

SUPPORT SERVICES



Custom Factory Programming

Our expert programmers can fully customize installs ranging from simple device configurations to complex systems involving multiple brands, system networking, and integration with external control systems. The entire venue file can be customized with programmers who have the highest level of expertise for HARMAN software and equipment.



System Deployment Support

HARMAN engineers can support you during your system commissioning to help you meet necessary performance specifications and facilitate overall system deployment and project closeout. Deployment Support may include:

- Acceptance testing
- Loading and testing software and firmware
- Programming modifications and system updates
- Debugging



On-Site Training

HARMAN can provide you with in-depth education on operating and maintaining our comprehensive systems by means of on-site training for your staff or with various modular learning programs.



Scheduled Maintenance Checkup

HARMAN can schedule regular maintenance visits to provide a comprehensive review of your system operating parameters, health and performance diagnostics, and software and firmware updates.



24/7 Tech Support

Whether you only need the support during a key event or as a permanent service, we can make sure our technical staff is available to assist you anytime outside of normal service hours.



On-site Event Support

When it absolutely has to work. HARMAN field engineers have been on site for major events across the US to lend their expertise in ensuring uptime against unforeseen situations.

For more information about Professional Services
Email: HProServices@harman.com



HARMAN Equipment Finance Administered by Quail Capital

HARMAN Equipment Finance combines HARMAN’s legendary brands and products that are second to none with Quail Capital’s 35+ years of experience structuring custom financing solutions for the entertainment industry. HEF knows our industry and has been providing financing for over 17 years. HEF provides the most streamlined and most robust business equipment financing options available.

HEF PROVIDES A ONE-STOP SOLUTION IDEAL FOR:

- Production Companies
- Lighting & Sound Rental Companies
- Touring Companies
- Broadcasting Companies
- Houses of Worship
- Theatres and Stadiums
- Restaurants & Clubs and many more...

Spend less time worrying about how you’re going to afford the HARMAN equipment you want, and more time using that equipment to grow your business.

Rates as low as

0%

plus

**NO PAYMENTS FOR
90 DAYS**

with a minimum purchase of \$30,000!

LEVERAGE YOUR EQUIPMENT PURCHASE WITH FIXED RATES USING HEF

- Simple One Page Application Process
- Below Market Rates
- Flexible 12-60 Month Plans
- Fast Approval Results
- Deferred Payment Plans Available

Just ask HEF!

For information, contact Ardy Barahman
Cell: 818-439-4969
Office: 818-565-6252
Email: HEF@quailcap.com
www.harmanequipmentfinance.com





SUMMER 2015 POCKET GUIDE

