

For crisp picture quality in a minimalist package, use a **Dragonfly ThinLine™ Ultra Black ALR** projection screen to show off your favorite show or your latest presentation.

Our ThinLine model features a razor-slim 7mm (0.28") thin bezel frame, giving you the sturdy strength of an on-wall screen without the bulk.

Plus, this ambient material's seven strong layers use Black Lenticular Lens Technology to ensure you have the best picture even in the brightest rooms.

## FEATURES

### SHARP IMAGE, SLIM PACKAGE

Because this thin-bezel ambient screen's unique material absorbs and rejects excess ambient light in a room, it's able to deliver better vibrance and a sharper color contrast -- making blacks look even blacker and enhancing the overall color spectrum.

### PREMIUM IMAGE QUALITY

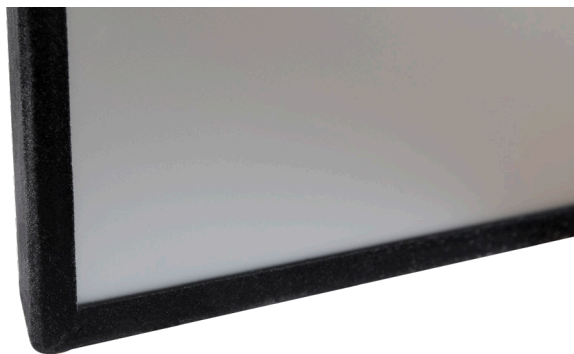
These screens are engineered for **4K HDR** resolution, so they're optimized to deliver a pixel-perfect performance. Your favorite movies, TV shows and presentations have never looked better.

### WIDE VIEWING ANGLE

Dragonfly Ultra Black ALR screens deliver a wide viewing angle of up to **160°**. This means that every seat in the house will still keep you on the edge of your seat.



# Dragonfly Thinline™ Ultra Black ALR Product Details

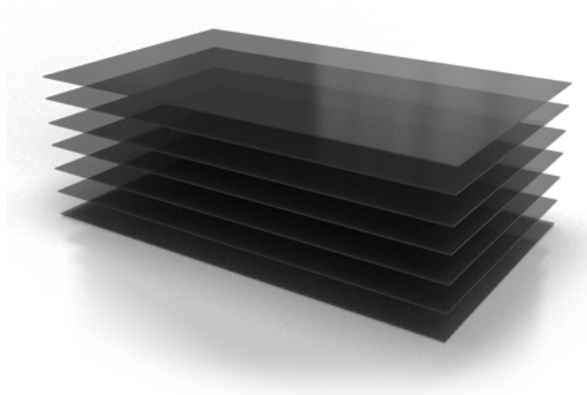


## FIXED

Show it off to everyone. Our fixed screens mount directly to the wall and add a polished look to any room, whether it's in a dedicated home theater or multi-purpose space.

## SEVEN STRONG LAYERS

Our layered ambient material is tough enough to withstand the brightest lights. Using an optical lens layer that enhances ambient light rejection and image contrast; a reflection layer to increase half-gain angles; a black color layer for reproduction and contrast help; and a surface coating to make the material scratch-resistant, this screen rejects the most amount of light.



	DF-TB-92-ALR	DF-TB-100-ALR	DF-TB-110-ALR	DF-TB-120-ALR
Viewing Angle	160°	160°	160°	160°
Screen Size	92"	100"	110"	120"
Screen System	Fixed Frame - Thin Bezel	Fixed Frame - Thin Bezel	Fixed Frame - Thin Bezel	Fixed Frame - Thin Bezel
Light Rejection	95%	95%	95%	95%
Half Gain Angle	85°	85°	85°	85°
Aspect Ratio	16:9	16:9	16:9	16:9
Gain	0.8	0.8	0.8	0.8
Screen Material	Ambient Light Rejecting	Ambient Light Rejecting	Ambient Light Rejecting	Ambient Light Rejecting
Viewing Area Height	45.1"	49"	53.9"	57.8"
Viewing Area Width	80.2"	87.2"	95.9"	102.8"
Construction	Extruded Aluminum - Felt Covered Thin Bezel	Extruded Aluminum - Felt Covered Thin Bezel	Extruded Aluminum - Felt Covered Thin Bezel	Extruded Aluminum - Felt Covered Thin Bezel
Weight (lbs.)	33.8	36.3	39.4	45.7
Dimensions (W x H x D)	80.7" x 45.7" x 1.1" (1.5 with brackets)	87.7" x 49.6" x 1.1" (1.5 with brackets)	96.4" x 54.5" x 1.1" (1.5 with brackets)	103.4" x 58.4" x 1.1" (1.5 with brackets)

