

Bowers & Wilkins

Mini Theatre

M-1

PV1D





Seamless entertainment In the best movies, everything fits. Actors, dialogue, storyline – it's when all these separate elements merge effortlessly together that you know you're in for a great cinematic experience. The same goes for our Mini Theatre series. Tucked away on a bookshelf or mounted on stands, these are speakers designed to blend elegantly and unobtrusively into your surroundings. And thanks to some dramatic technological improvements, satellites and subwoofers now integrate so seamlessly that each individual speaker seems to vanish, leaving you with the most immersive, fully formed cinema sound possible. No joins. No gaps. Just pure entertainment.

Double act
Mini Theatre is available in two different systems: the entry-level MT-50, and the flagship MT-60D (pictured opposite), featuring the mighty PV1D subwoofer.





Matte Black Matte White



Sleek, compact, yet packing a powerful punch, the M-1 satellite speaker is the backbone of both our Mini Theatre systems, taking all five positions in a surround-sound set-up. From the inside out, the M-1 was conceived as a unified system. Its design has evolved in a totally integrated way, from the custom-made crossover to the two-piece clamshell cabinet.

And now, following a complete technological overhaul, including all-new drive units designed in-house, it sounds better than ever. Dispersion has increased. Imaging is pin-point accurate. Performance is now full range. In fact, the improvement is such that a single pair of M-1s could happily take on the role of your dedicated stereo speakers. It all adds up to stunning sound, whatever you're listening to.

Cabinet

The key to the M-1's rock-solid sound is its unified, integrated structure: the way the design coalesces the components and cabinet into a harmonious whole. It all fits together beautifully, with a minimum of noise-inducing seams, joints and discontinuities. The result is a speaker that's rigid, well-damped and air-tight.



Tweeter

The M-1's tweeter is no off-the-peg model – it's a highly specialised piece of equipment custom-made by the same designers and engineers who created some of our best-known hi-fi speakers, including the CM Series. As well as featuring a unique surround material, the tweeter is tube-loaded – a design innovation we first introduced on our groundbreaking Nautilus™ speaker. The tube works by soaking up unwanted resonance from the back of the tweeter, so the sound you hear from the front is as detailed and precise as possible.



Bass/midrange

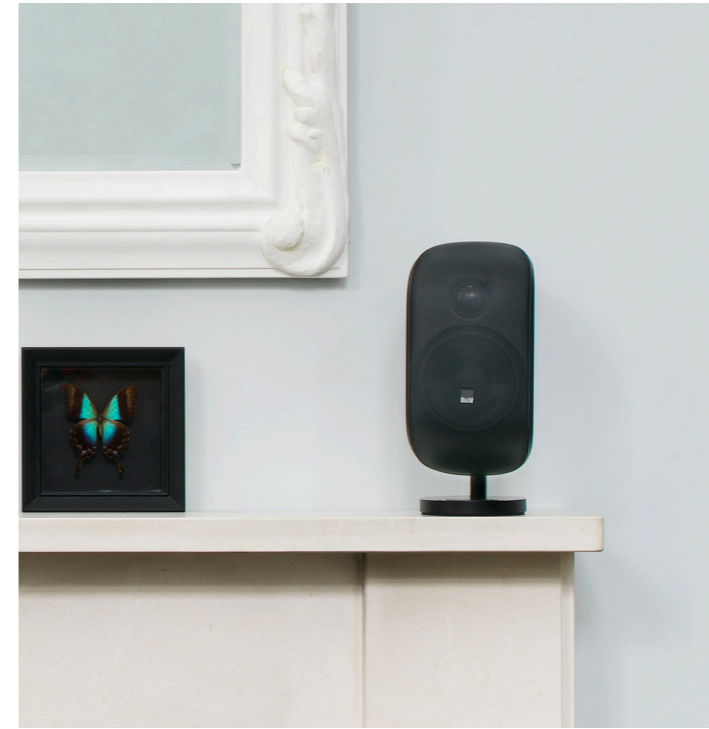
The redesigned bass/midrange driver features our Anti-Resonance Plug – an acoustic innovation first seen on our high-end PM1 loudspeaker. Constructed from polymer foam, the mushroom-shaped device soaks up resonance like a sponge while also reducing cone break-up, creating unparalleled clarity and detail in the midrange.

Limitless versatility



When you're watching a movie, it's what's on the screen – not around it – that's important. So the M-1 doesn't hog the limelight. Everything about its design, from its compact stature to its graceful curving edges, helps the speaker fit gracefully into the background and let the screen take centre stage. But take a closer look at the M-1, and you'll soon start to notice the design ingenuity and attention to detail that's gone into making this speaker so discreet.

The speaker's versatility, for example, allows it to adapt perfectly to any home cinema environment, no matter how awkward the space. You can put the M-1 on a bookshelf. Or mount it on a wall. Or position it on its own floor stand. It can even swivel to a horizontal position, for when you want to use one as a centre channel speaker. Available in a choice of Matte Black or Matte White finishes, its clamshell cabinet is formed from just two interlocking, continuously curving sections. So no hard lines to distract the eye.



Cable management

In the same way a power cable enters a well-designed table lamp at its base and passes up through the stand, the M-1's signal cable disappears into the back of the table plinth stand, from where the signal reaches the speaker via a specially-designed, pre-wired arm support.



Matte Black

Matte White



When we decided to create a new, powerful, compact subwoofer for use in home theatre set-ups, we weren't going to contradict nature. Instead of a box, we based it on a bubble; the natural way of containing internal pressures without resorting to corners and edges. It's a beautiful solution to the problems that plague conventional subwoofers. In the PV1D, the tremendous air pressures that stress the panels of normal, flat-sided subs at higher output levels are dispersed evenly around a rigid, continuous shell, reducing unwanted vibrations to a bare minimum.

The PV1D's inherent stability means it can be pushed just that bit further. The symmetrical mounting of its twin drive units keeps the subwoofer perfectly balanced and anchored to the floor. So there's no rattle when it rumbles. The back-to-back arrangement also further improves the distribution of pressure inside the speaker. Coupled to an all-new amplifier generating 400 Watts of power, the drivers have the dynamics and control to deliver all a subwoofer should. A big sound from a small bubble.



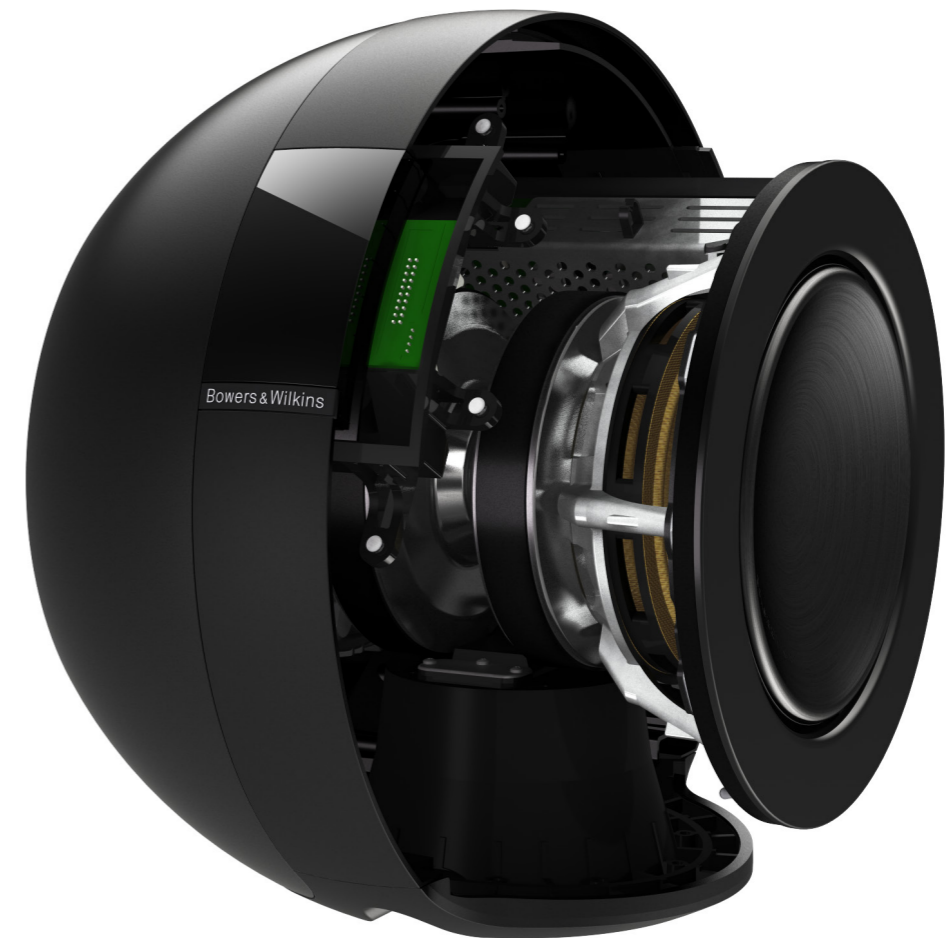
Total control

Contained within a discreet dark band encircling the speaker, the OLED display panel gives easy access to a number of pre-sets and tuning options. The PV1D also comes with our custom SubApp PC software, which provides more advanced set-up options.

Bass the way you like it

When you've pushed the boundaries of technological design further than anyone thought possible, what do you do? Simple: you keep pushing. The PV1 has long been regarded as something of an icon in domestic subwoofer design, both for its striking shape and superlative sonic performance. But by introducing a digital dimension for the upgraded PV1D, we think we've gone one better.

Adopting the digital platform developed for our flagship DB1 subwoofer allows the PV1D to be fine tuned and controlled with more precision than its predecessor. Do you love the visceral deep-bass impact of special movie sound effects? Or maybe you prefer a flatter response, to compensate for a more resonant listening environment? Whatever your listening tastes, with a full range of EQ options at your disposal, the choice is entirely up to you.





Matte Black Matte White

MT-60D If you're looking for uncompromising cinema sound that fits easily into your life, look no further than our flagship Mini Theatre system. The MT-60D system twins M-1 speakers with the stunning power and control of a PV1D subwoofer to create a sound that will keep you gripped, right up until the final frame.





Matte Black



Matte White

MT-50 Big movie sound doesn't necessarily require a blockbuster budget. Our entry-level MT-50 system delivers both great value and a truly immersive cinematic soundscape. This system swaps the PV1D for our compact but punchy ASW608 subwoofer, available in a choice of matt black and white finishes to match the M-1s.



M-1

Drive units 1x ø25mm (1in) metal dome high-frequency
 1x ø100mm (4in) woven glass fibre cone bass/
 midrange
Sensitivity 85dB spl (2.83V, 1m)
Nominal impedance 8Ω (minimum 4Ω)
Crossover frequency 4kHz
Recommended amplifier power 20W – 100W into 8Ω on
 unclipped programme
Dimensions (Mounted on table stand)
 Height: 248mm (9.8in)
 Width: 114mm (4.5in)
 Depth: 162mm (6.4in)
Net weight 2.3kg (5lb) including table stand
Finishes Cabinet: Matte White or Matte Black
 Grille: Matte White or Matte Black
 perforated steel to match



PV1D

Drive units 2x ø200mm (8in) paper/Kevlar®/aluminium cone
 long-throw
Amplifier Power output: 400W
 Rated power
 consumption: 150W
 Standby power
 consumption: <1W
 Input impedance: 100kΩ
 Signal / noise: >100dB
Functions: 5 Presets
 Input sensitivity (analogue)
 Gain (digital)
 Low-pass filter frequency
 Low-pass filter slope
 Low-pass filter phase
 Auto on/standby
 Trigger on/standby
 Trigger preset switching
 RS-232 automation control
Inputs: Stereo Line In (2x RCA Phono)
 Speaker Level In
 (5m cable supplied)
Dimensions
 Height: 342mm (13.5in)
 Width: 270mm (10.6in)
 Depth: 358mm (14.1in)
Net weight 18.7kg (41lb)
Finishes Matte Black
 Matte White



ASW608

Drive unit 1x ø200mm (8in) paper/
 Kevlar® cone long-throw
Amplifier Power output: 200W
 Rated power
 consumption: 40W
 Standby power
 consumption: 0.5W
 Input impedance: 33kΩ
 Signal / noise: >90dB
Functions: Volume level – line in
 Volume level – speaker in
 Low-pass filter frequency
 Low-pass filter bypass (line
 in only)
 Bass extension
 Bass roll-off alignment
 Auto sense on/standby
 Phase switch
Inputs: Stereo Line In
 (RCA Phono)
 Speaker In (Binding post)
 12V trigger (3.5mm jack)
Dimensions
 Height: 260mm (10.2in)
 not including feet
 Width: 260mm (10.2in)
 Depth: 330mm (13in) including
 grille and controls
Net weight 8.85kg (19.5lb)
Finishes Cabinet: Matte Black
 Matte White
 Grille: Black with Black
 Grey with White



MT-60D

Satellites
 Subwoofer
 Finishes



Satellites 5 x M-1
 Subwoofer ASW608
 Finishes Matte Black
 Matte White



Bowers & Wilkins

www.bowers-wilkins.com

Kevlar is a registered trademark of DuPont.
Nautilus is a trademark of B&W Group Ltd.

Copyright © B&W Group Ltd.
Floorstands featured within this brochure are not supplied with the speakers. E&OE.
Design by Thomas Manss & Company.
Production by Mibrand. Printed in UK.
B&W Group Ltd reserves the right to amend details of the specifications without notice in line with technical developments.