

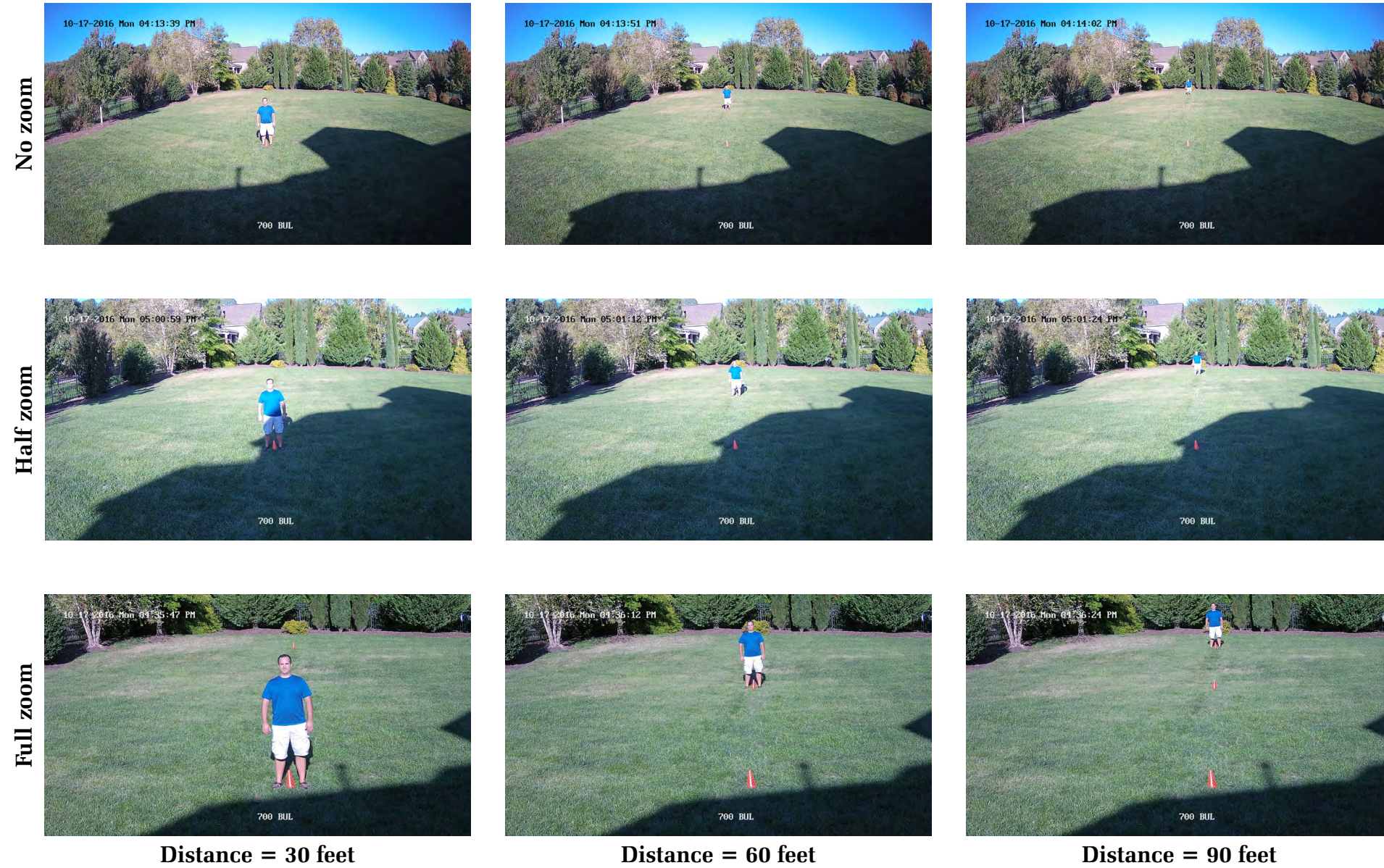
# Field of View Examples for Varifocal Cameras

700 Bullet Zoom Levels (Day) .....	2
700 Bullet Zoom Levels (Night) .....	3
700 Dome Zoom Levels (Day) .....	4
700 Dome Zoom Levels (Night) .....	5
WPS 750 Dome Zoom Levels (Day) .....	6
WPS 750 Dome Zoom Levels (Night) .....	7



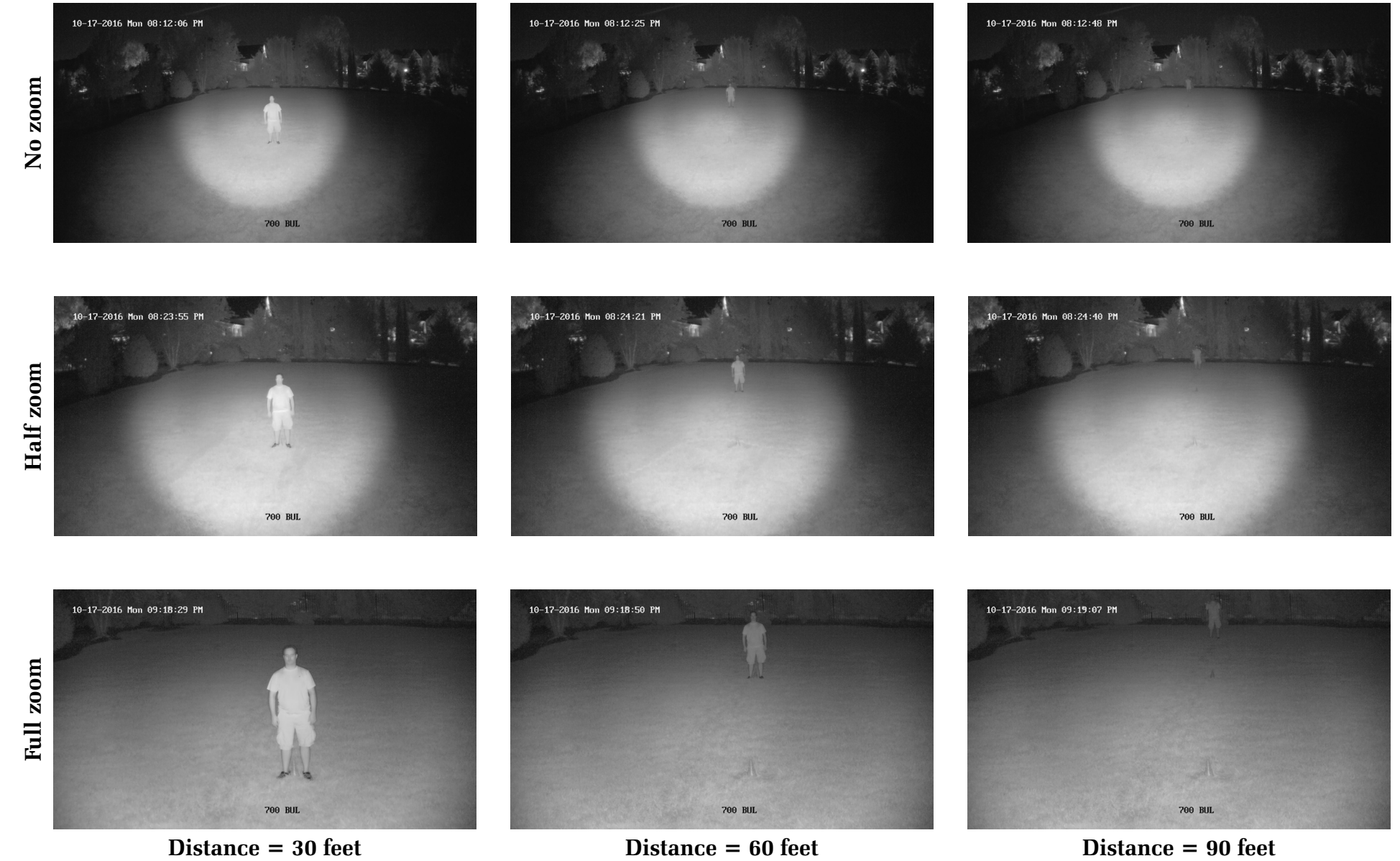
## 700 Bullet Zoom Levels (Day)

This grid of photos uses screenshots from a 700 series bullet camera. Each column has the subject at a different distance from the camera, while the rows show the effects of zoom, ranging from no zoom to full zoom. Click on an image to see it at full resolution.



## 700 Bullet Zoom Levels (Night)

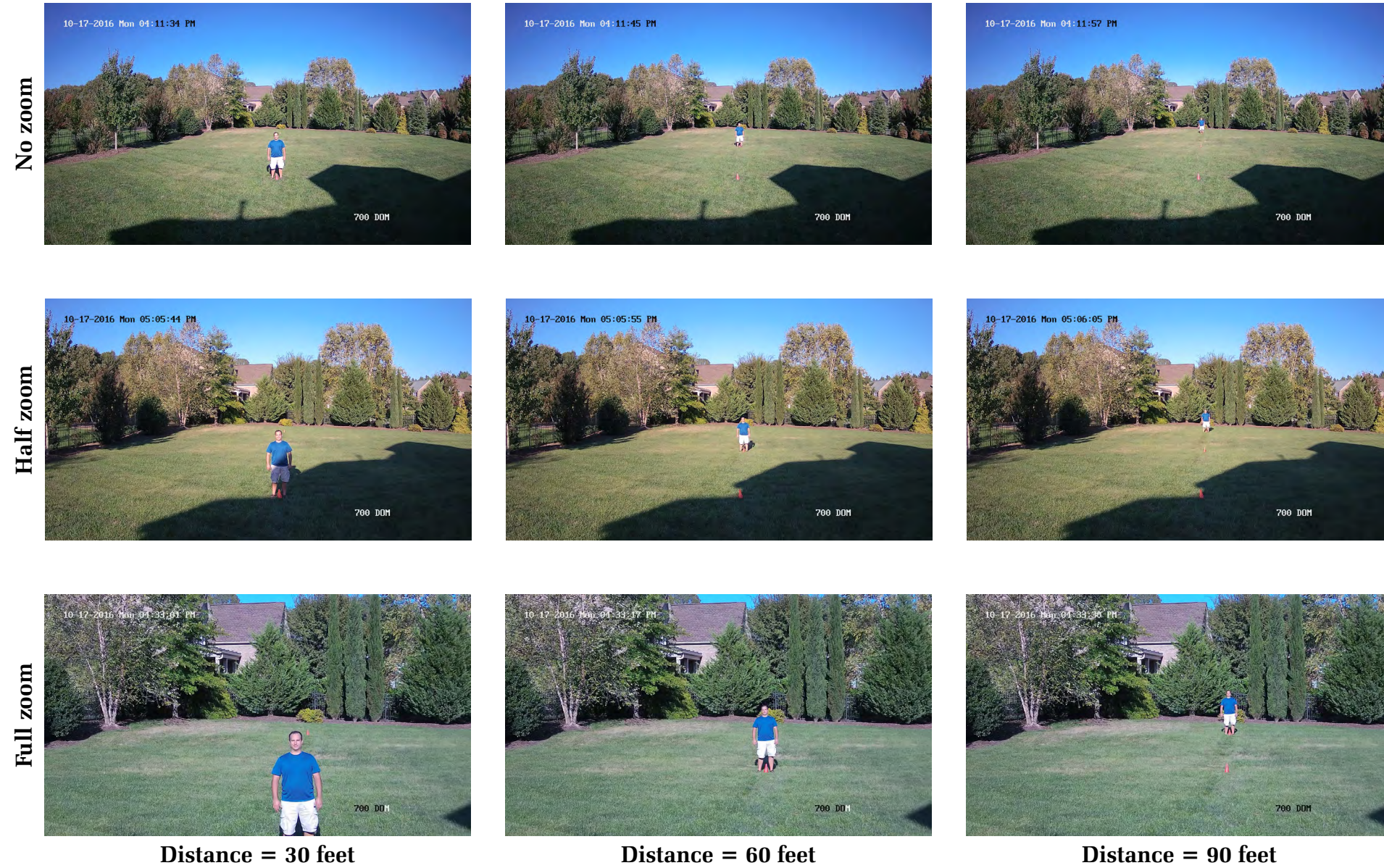
This grid of photos uses screenshots from a 700 series bullet camera. Each column has the subject at a different distance from the camera, while the rows show the effects of zoom, ranging from no zoom to full zoom. These images are taken in a tree-lined backyard with no landscape lighting (a worst-case scenario for IR surveillance). Click on an image to see it at full resolution.





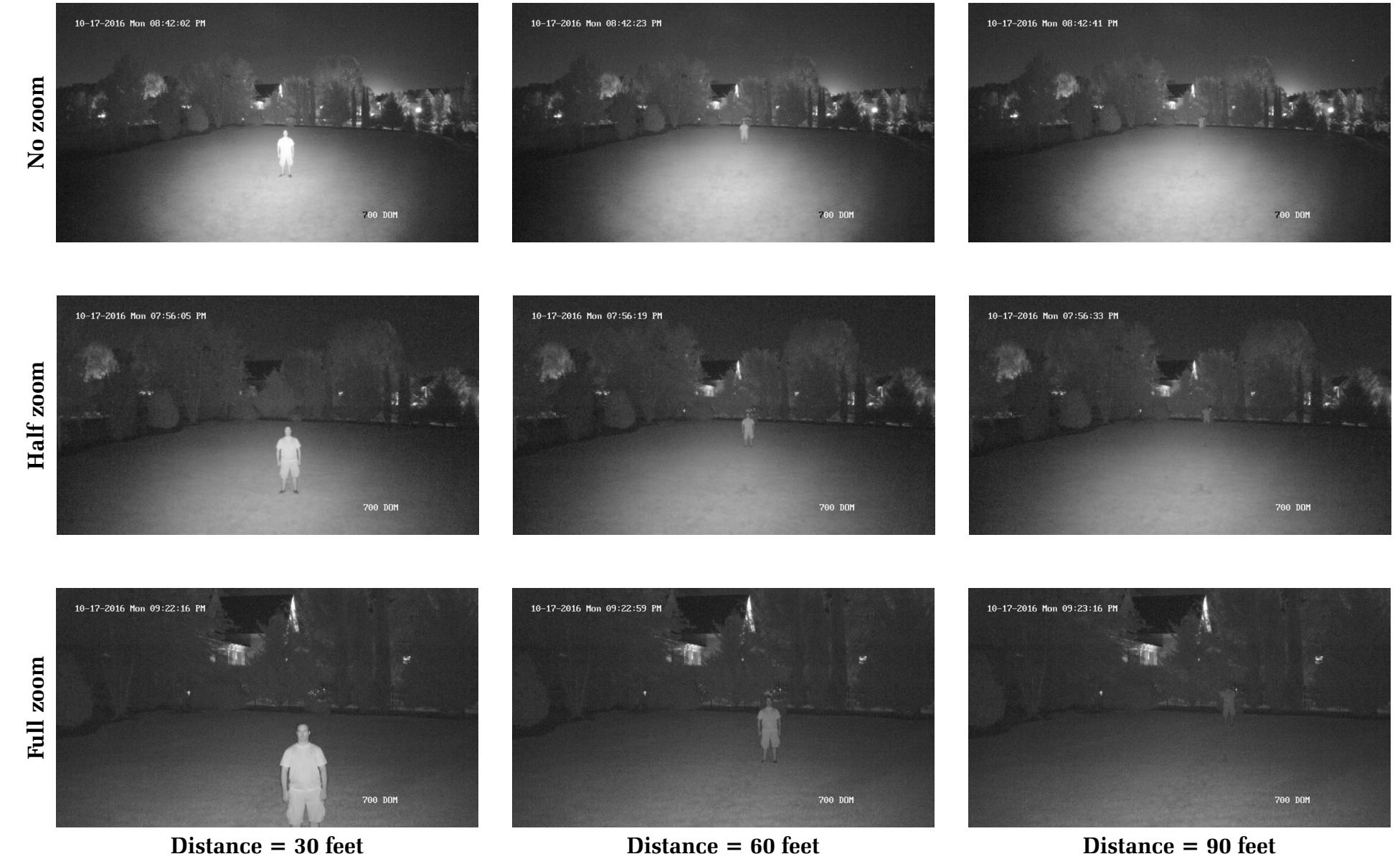
## 700 Dome Zoom Levels (Day)

This grid of photos uses screenshots from a 700 series dome camera. Each column has the subject at a different distance from the camera, while the rows show the effects of zoom, ranging from no zoom to full zoom. Click on an image to see it at full resolution.



## 700 Dome Zoom Levels (Night)

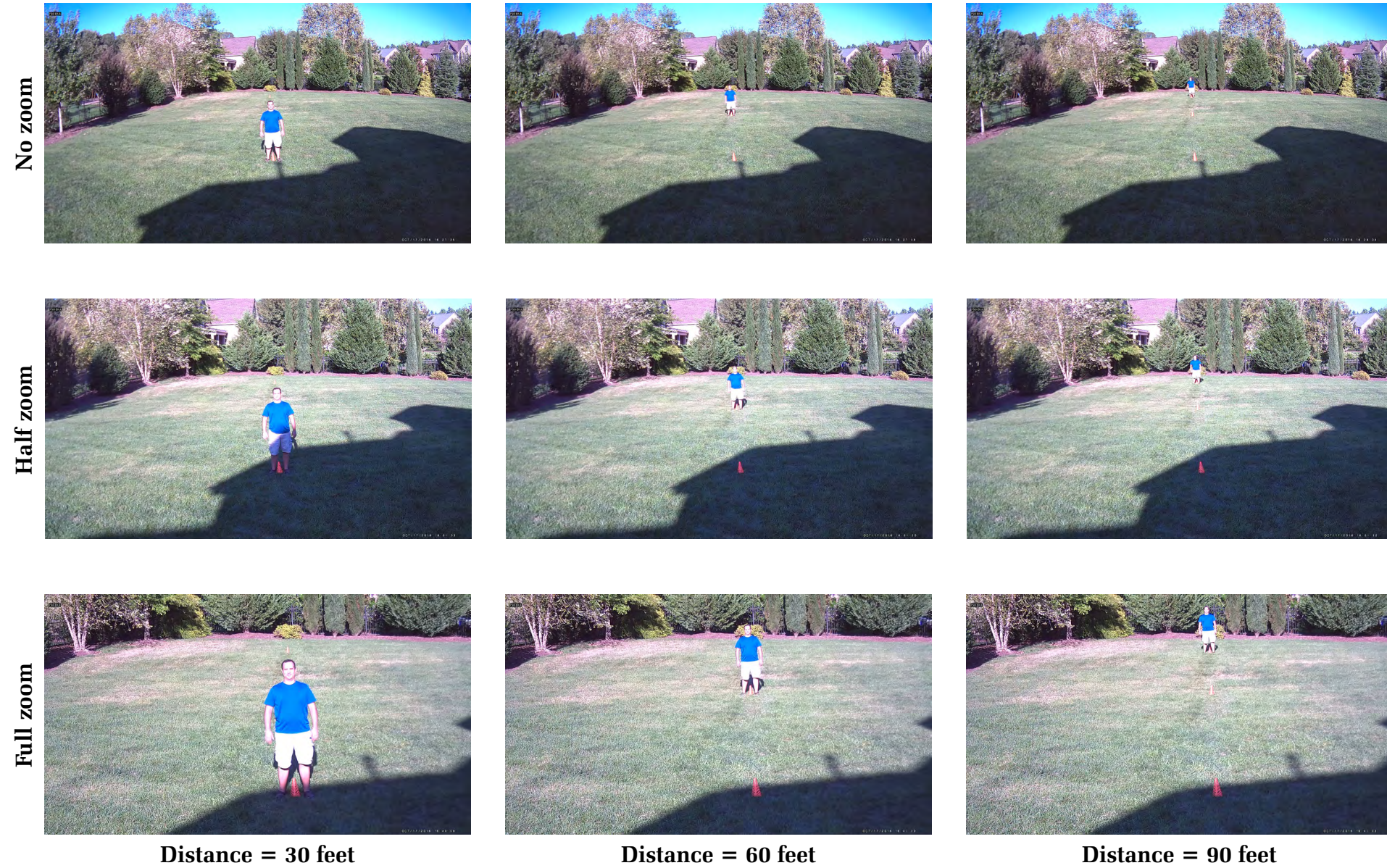
This grid of photos uses screenshots from a 700 series dome camera. Each column has the subject at a different distance from the camera, while the rows show the effects of zoom, ranging from no zoom to full zoom. These images are taken in a tree-lined backyard with no landscape lighting (a worst-case scenario for IR surveillance). Click on an image to see it at full resolution.





## Wirepath 750 Bullet Zoom Levels (Day)

This grid of photos uses screenshots from a Wirepath 750 bullet camera. Each column has the subject at a different distance from the camera, while the rows show the effects of zoom, ranging from no zoom to full zoom. Click on an image to see it at full resolution.



## Wirepath 750 Bullet Zoom Levels (Night)

This grid of photos uses screenshots from a Wirepath 750 bullet camera. Each column has the subject at a different distance from the camera, while the rows show the effects of zoom, ranging from no zoom to full zoom. These images are taken in a tree-lined backyard with no landscape lighting (a worst-case scenario for IR surveillance). Click on an image to see it at full resolution.

