

# Fiber Optic Adapters & Inserts

Feedthrough Adapters, Hybrid Adapters, Keystone Inserts



SSF™ Fiber Optic Feedthrough Adapters provide easy cable connections. Available in simplex and duplex SC/SC and LC/LC configurations for single mode (OS2 or 9/125 μm) and multimode fibers (OM2, OM3, OM4 or 50/125 μm).

SSF™ Hybrid Adapters are available in single mode or multimode and SC to LC.

Feedthrough-style keystone inserts for standard wall plates are also available in LC and SC configurations.

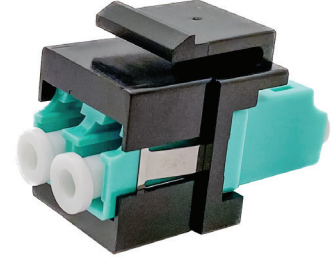
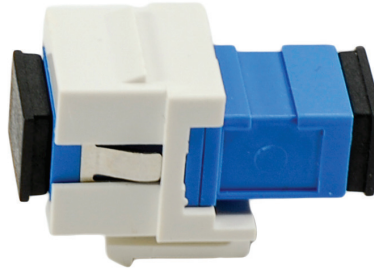
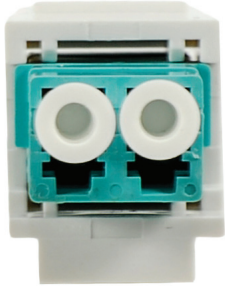


## FEATURES AND BENEFITS

- Meets TIA/EIA-568-B.3, TIA/EIA-604 FOCIS transmission standards
- Zirconia ceramic split sleeve
- Insertion loss: 0.1 dB average

PART NUMBER	STYLE	CONNECTOR	SLEEVE	MOUNT TYPE	FIBER TYPE
<b>FEEDTHROUGH ADAPTERS</b>					
SSF-DLCLC-MMADP	Duplex	LC to LC	Ceramic	Flange	OM2/OM3/OM4
SSF-DLCLC-SMADP	Duplex	LC to LC	Ceramic	Flange	OS2
SSF-DLCLC-SMAPCADP	Duplex	LC APC to LC APC	Ceramic	Flange	OS2
SSF-DSCSC-MMADP	Duplex	SC to SC	Ceramic	Flange	OM2/OM3/OM4
SSF-DSCSC-SMADP	Duplex	SC to SC	Ceramic	Flange	OS2
SSF-DSCSC-SMAPCADP	Duplex	SC APC to SC APC	Ceramic	Flange	OS2
SSF-SLCLC-MMADP	Simplex	LC to LC	Ceramic	No flange	OM2/OM3/OM4
SSF-SLCLC-SMADP	Simplex	LC to LC	Ceramic	No flange	OS2
SSF-SSCSC-MMADP	Simplex	SC to SC	Ceramic	Flange	OM2/OM3/OM4
SSF-SSCSC-SMADP	Simplex	SC to SC	Ceramic	Flange	OS2
SSF-SLCLC-SMAPCADP	Simplex	LC/APC to LC/APC	Ceramic	No flange	OS2
SSF-SSCSC-SMAPCADP	Simplex	SC/APC to SC/APC	Ceramic	Flange	OS2
<b>HYBRID ADAPTERS</b>					
SSF-SCLC-MMADP	Simplex	Male SC to Female LC	Ceramic		OM2/OM3/OM4
SSF-SCLC-SMADP	Simplex	Male SC to Female LC	Ceramic		OS2
SSF-LCSC-MMADP	Simplex	Male LC to Female SC	Ceramic		OM2/OM3/OM4
SSF-LCSC-SMADP	Simplex	Male LC to Female SC	Ceramic		OS2

## KEYSTONE INSERTS



PART NUMBER	STYLE	CONNECTOR	SLEEVE	MOUNT TYPE	FIBER TYPE
<b>KEYSTONE INSERTS</b>					
SSF-LC-MMKIBK	Duplex - Black	LC to LC	Ceramic	Keystone	OM2/OM3/OM4
SSF-LC-MMKIW	Duplex - White	LC to LC	Ceramic	Keystone	OM2/OM3/OM4
SSF-LC-SMKIBK	Duplex - Black	LC to LC	Ceramic	Keystone	OS2/UPC
SSF-LC-SMKIW	Duplex - White	LC to LC	Ceramic	Keystone	OS2/UPC
SSF-LC-SMAPCKIW	Duplex - White	LC to LC	Ceramic	Keystone	OS2/APC
SSF-SC-MMKIBK	Simplex - Black	SC to SC	Ceramic	Keystone	OM2/OM3/OM4
SSF-SC-MMKIW	Simplex - White	SC to SC	Ceramic	Keystone	OM2/OM3/OM4
SSF-SC-SMKIBK	Simplex - Black	SC to SC	Ceramic	Keystone	OS2/UPC
SSF-SC-SMKIW	Simplex - White	SC to SC	Ceramic	Keystone	OS2/UPC
SSF-SC-SMAPCKIW	Simplex - White	SC APC to SC APC	Ceramic	Keystone	OS2/APC
SSF-LC-MMKILA	Duplex - Light Almond	LC to LC	Ceramic	Keystone	OM2/OM3/OM4
SSF-LC-SMKILA	Duplex - Light Almond	LC to LC	Ceramic	Keystone	OS2/UPC
SSF-SC-MMKILA	Simplex - Light Almond	SC to SC	Ceramic	Keystone	OM2/OM3/OM4
SSF-SC-SMKILA	Simplex - Light Almond	SC to SC	Ceramic	Keystone	OS2/UPC