



engineered by
Snap
av

OWNER'S MANUAL

>> IN-WALL SUBWOOFER

ES-SUB-IW-DUAL8



Thank you for purchasing a great product from one of the best sounding speaker lines available today, Episode®. We appreciate your purchase and are committed to providing the highest quality products possible.

The Episode® In-wall Subwoofer model is a superb choice for almost every type of home theater or home audio installation. They have been designed with advanced technological components that allow for high performance and a lifetime of enjoyment.

IMPORTANT INSTRUCTIONS AND CONSIDERATIONS

- Read and understand all instructions.
- Before beginning installation, carefully plan locations accounting for potential electrical, plumbing or other obstacles.
- Contact a suitable contractor if you are unsure of how to best install.

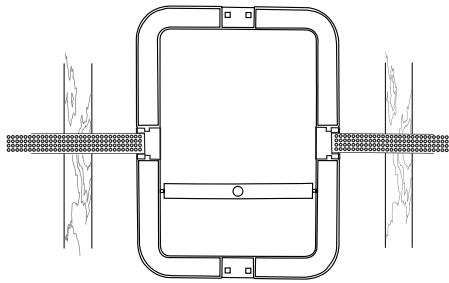
SUBWOOFER PLACEMENT

- Episode® subwoofers are designed to make your music and movies come alive. However, where you place the subwoofer can have an effect on the performance that you receive. All rooms are different, but the strongest output will likely occur if you place your subwoofer in the front of the room on the same wall as your front channel speakers.
- Keep subwoofer about 2 feet away from corners and other surfaces that might interfere with or reflect sound, such as tall furniture.

INSTALLATION

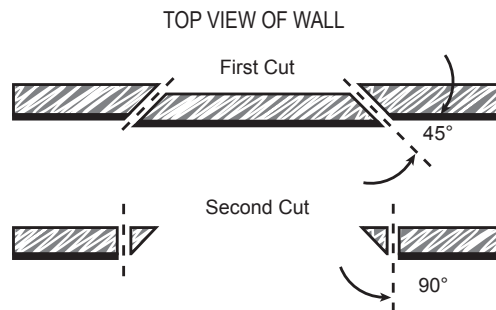
NEW CONSTRUCTION

Episode® subwoofer installations can be simplified by using Episode New Construction Brackets (sold separately). These are installed prior to drywall, and allow for precise placement and ease the final installation of the subwoofer.



EXISTING CONSTRUCTION

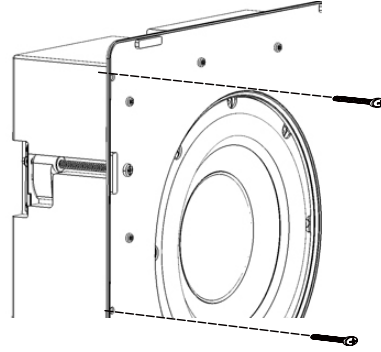
- Speaker wire must be run from the equipment to the subwoofer location. High quality 14 gauge or thicker speaker wire is recommended.
- Once you have determined your locations, mark the hole to cut out for the subwoofer using the supplied template. Don't forget to allow for the size of the subwoofer bezel if you are choosing to install the subwoofer near a side wall or other item that could become an obstacle.
- If you are unsure of potential obstacles, carefully cut a small hole at an angle to the inside of the template line as illustrated. This will allow you to 'plug' the hole easily if needed. If the area is clear and is a good location for the speaker, go ahead and cut the edges of the opening at 90 degrees to accommodate the subwoofer.



- Strip the insulation on each conductor approximately $\frac{1}{4}$ " and insert into the subwoofer terminals. Ensure that there are no stray strands of wire protruding from the connectors. Observe proper polarity (+ to + and – to – for the subwoofer and at the amplifier).
- Insert the subwoofer into the wall and tighten each of the six screws for the subwoofer 'dog' legs enough to clamp the subwoofer against the wall.

- When mounting next to a stud, where the 'dog' legs can not swing out, install four screws (not included) into the stud through four holes at the edge of the bezel.
- Place the magnetic grill over the subwoofer. Make sure it is flush against the wall.

CAUTION: Do not overtighten screws. This could result in subwoofer damage, wall damage or both.

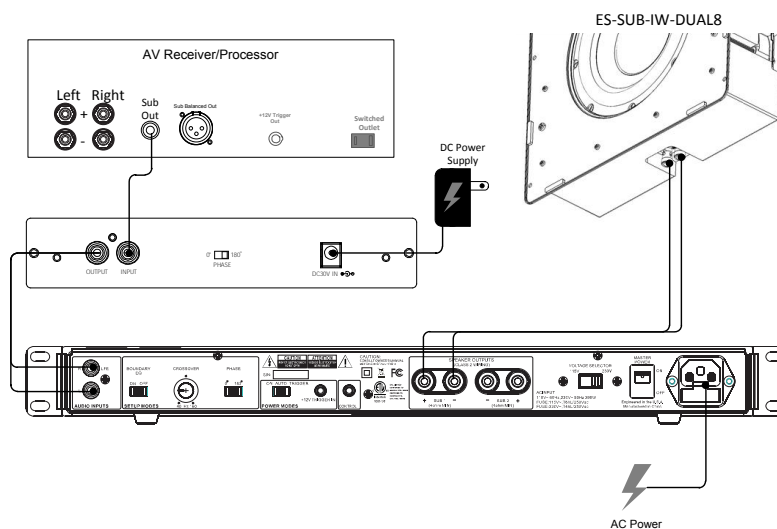


ELIMINATING VIBRATIONS

- For high SPL users, foam pads have been included. Place the foam pads on the front of the speaker beside the driver to dampen any potential grill rattle.
- When installing into thicker drywall, it may be necessary to apply extra foam pads on top of the existing pads on the back of the subwoofer to minimize vibration from the subwoofer into the rear drywall. Applying foam pads on the side of the subwoofer can minimize vibration from the subwoofer into the studs.

CONNECTING YOUR EPISODE® SUBWOOFER

- The Episode® In-wall Subwoofer is supplied with an active EQ box and power supply. The EQ box should be installed between the receiver/source and amplifier (see below using Episode® E-2100 amplifier).
- Connect the Active EQ box between the receiver and the E-2100 amplifier inputs by connecting RCA-type cables from the receiver sub out to the EQ box input. Connect the EQ box out to the E-2100 amplifier CH 1 and CH 2 inputs. Since the EQ box has only one single output connection, an RCA Y adapter (one female connector to two male connectors) is needed for the E-2100 stereo inputs as shown below. The Y connector is supplied in the E-2100 amplifier box.
- Plug the supplied EQ power supply into the EQ box and the 110V outlet. The EQ box is signal sensing and turns on when receiving a signal. The EQ will go into standby mode automatically 5 minutes after the signal is off. The LED on the front of the EQ box will light up Blue when active, and turn red while in standby mode.



- On E-2100 set LOW PASS/FLAT switch to LOW PASS.
- On E-2100 set BRIDGED/STEREO switch to BRIDGED
- Play music with plenty of bass content.
- On EQ box set PHASE switch to 0° or 180° for maximum bass at listening position.
- On E-2100 adjust VOL and FREQ to desired blend between subwoofer and main speakers.

PAINTING

The subwoofer grill can be painted to match the wall color and room decor. Only paint the grill when it has been removed from the subwoofer. Remove the scrim cloth on the back of the grill before painting and reapply after painting. The cloth is adhered using repositionable spray adhesive. No need to add any adhesive when reapplying.

The grill should be painted with great care taken not to clog the fine holes with paint. Options of painting are:

- Spray paint ('dust') several thin layers instead of a few thick layers.
- Use a 'dry' brush or roller to minimize the amount of paint applied in each layer.

TROUBLESHOOTING

Episode® speakers are designed to function trouble-free. Most problems that occur are due to simple issues. If you have trouble, please check the list of simple fixes below. If the problem persists, contact Episode® Customer Service at 1.866.838.5052.

NO SOUND

- Verify that there is audio coming from the source selected. Select another source if necessary.
- Ensure that any power amplifiers are turned on and connected properly.
- Check any connections at all devices, such as a volume control. Temporarily bypass the control if needed.
- Check wire connections at each subwoofer not producing sound for good contact to bare wire, not wire insulation.



WARRANTY

Limited Lifetime Warranty

Episode® In-wall, In-ceiling, and Bookshelf Speakers have a Lifetime Limited Warranty. This warranty includes parts and labor repairs on all components found to be defective in material or workmanship under normal conditions of use. This warranty shall not apply to products which have been abused, modified or disassembled. Products to be repaired under this warranty must be returned to SnapAV or a designated service center with prior notification and an assigned return authorization number (RA).

For Technical Support: 1.866.838.5052

© 2012 Episode
120629-1130