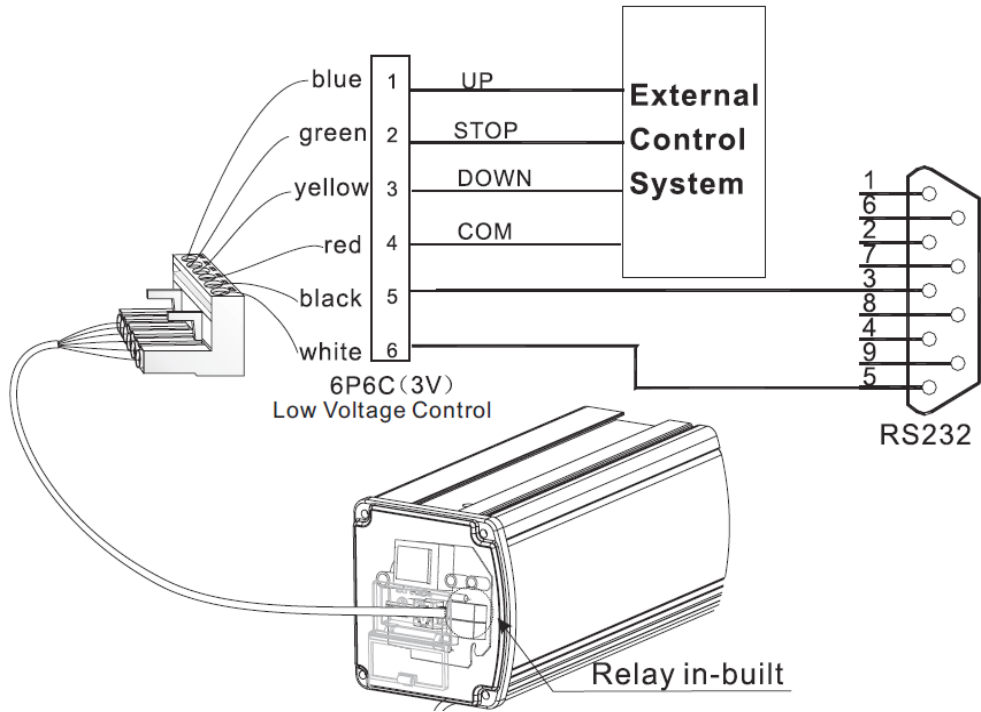


*** RS-232 transmission format (1-way only): SnapAV Dragonfly Motorized Screens**



Baud Rate : 2400 bps
 Data Bit : 8 bits
 Initial Bits: 1
 Parity : None
 Stop Bit : 1



RS-232 Serial Control Protocol

*** Command Structure:**

OUTPUT	HEX VALUE
Up	0xFF 0xEE 0xEE 0xEE 0xDD
Stop	0xFF 0xEE 0xEE 0xEE 0xCC
Down	0xFF 0xEE 0xEE 0xEE 0xEE

REV	Changes By
1.0	DM