



DISTRIBUTED AUDIO

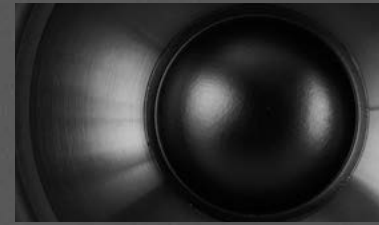
Klipsch


TABLE OF CONTENTS

WHY KLIPSCH?
COMPACT PERFORMANCE SERIES
TRACTRIX HORN
CA SPEAKERS
IN-CEILING SPEAKERS
"MUMPS" HORNS
SPECIFICATIONS



WHY KLIPSCH?



For over 65 years, Klipsch has built premium loudspeakers with a no-compromise attitude, adhering to sound principles pioneered by our founder, Paul W. Klipsch:

- **High Efficiency:** the highest sound output for a given wattage input
- **Low Distortion:** even the softest sounds are heard with clarity and detail, the loudest sounds without harshness or distortion
- **Controlled Directivity:** the accurate projection of sound which, in turn, allows even distribution of sound in a given area
- **Controlled Frequency Response:** producing the required response to maximize various acoustic environments

Whether in the home, on the stage, in the cinema or in your favorite store or restaurant, our sound is uniquely detailed and clear. Our exclusive Tractrix® Horn-loaded technology reproduces truly engaging sound at even lower, background levels. Klipsch 70/100 Volt, distributed audio speakers use high quality transformers for an acoustic signature as close to our 8 ohm speakers as possible. Our unique, transformer less, 70 Volt in-ceiling subwoofer significantly improves low-frequency bandwidth for deep, realistic bass. With thousands of installations around the world and a dedicated team to back them up, Klipsch can provide the perfect sonic atmosphere for any setting.



YOU NEED TO MAKE THE BEST IMPRESSION, FROM THE INITIAL JOB QUOTE THROUGH THE COMPLETED INSTALLATION. WE CAN HELP CHOOSE THE BEST KLIPSCH SPEAKERS FOR THE APPLICATION AND HELP DESIGN A SYSTEM THAT THOROUGHLY IMPRESSES.

SEND YOUR PLANS OR QUESTIONS TO US AT:
PROSYSTEMDESIGN@KLIPSCH.COM

COMPACT PERFORMANCE SERIES

THE LATEST 70/100V SPEAKER ADDITIONS TO THE KLIPSCH DISTRIBUTED AUDIO LINE MAINTAIN THE CLASSIC KLIPSCH SIGNATURE SOUND IN AN ALL- NEW DESIGN. COMPACT, STYLISH CABINETS BLEND INTO ALMOST ANY ENVIRONMENT AND UP-FRONT, ONE-SCREWDRIVER CONNECTIONS MAKE THE MOST EFFICIENT USE OF YOUR VALUABLE TIME. UNIQUE, FRONT-ATTACH, INTEGRATED BRACKETS COMBINE WITH V-SHAPED REAR PROFILE CABINETS TO ALLOW THE SPEAKERS TO ALMOST DISAPPEAR TIGHTLY IN A CORNER. EXCLUSIVE TRACTRIX® HORNS PROVIDE UNMATCHED LOW-DISTORTION, HIGHLY DETAILED SOUND AND COMBINE WITH LONG-THROW WOOFERS FOR EXCELLENT DYNAMICS AT ANY VOLUME LEVEL. SOLID, TALC-FILLED CABINETS WITH ALUMINUM GRILLS AND STAINLESS STEEL HARDWARE WILL MAKE THE CP SPEAKER SERIES YOUR PERFECT "EVERYDAY SPEAKERS" INDOORS OR OUT!



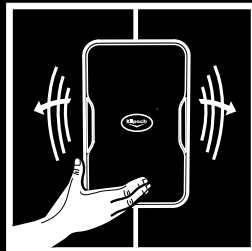
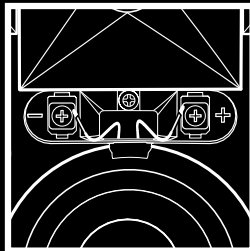
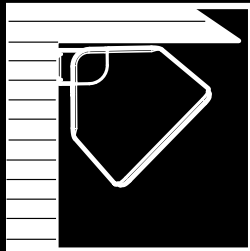
CP-4T

- .75" Aluminum tweeter mated to a 90° x 90° Tractrix® Horn
- 3.5" long-throw woofer
- Highly-efficient, low-distortion, musical sound
- Front access, one-screwdriver installation of bracket and wiring
- Tool-free angle adjustment
- Fixed, 5-watt tap
- Low resonance talc-filled PPC cabinets available in paintable Black or White
- Klipsch CA-800-TSW subwoofers recommended to compliment a CP-4T distributed audio system



CP-6T

- 75" Aluminum tweeter mated to a 90° x 90° Tractrix horn
- 5.25" long-throw woofer
- 4 tap settings (up to 30 watt/70V) with an 8 ohm bypass for high versatility
- 111 dB maximum output (8 ohms)
- Front access, one-screwdriver installation of bracket and wiring
- Tool-free angle adjustment
- Low resonance talc-filled PPC cabinets available in paintable Black or White



EASY ONE SCREWDRIVER/UP FRONT INSTALL

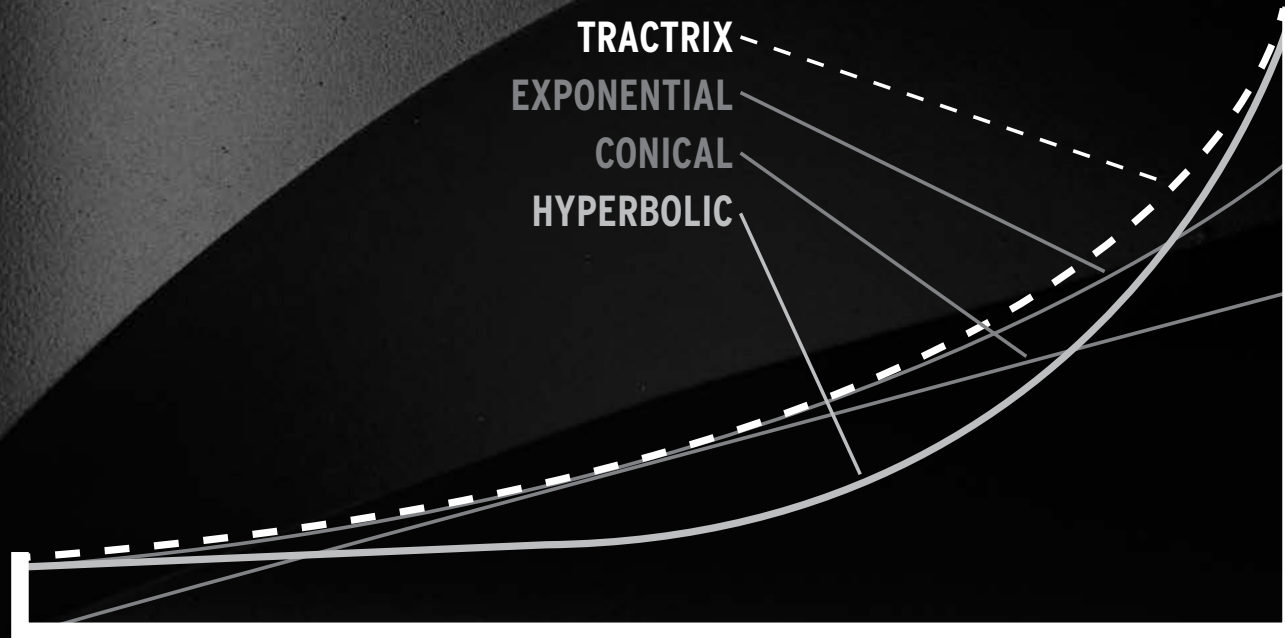
KLIPSCH COMPACT PERFORMANCE SERIES SPEAKERS ALLOW YOU TO ATTACH THE BRACKET TO THE WALL OR IN THE CORNER, PUSH THE SPEAKER ONTO THE FIRST NOTCH OF THE BRACKET, CHANNEL THE WIRE TO THE FRONT AND ATTACH, HANDSET THE DESIRED SPEAKER/BRACKET ANGLE WITHOUT ADDITIONAL TOOLS, PUSH THE SPEAKER TO THE LAST BRACKET NOTCH AND SCREW DOWN THE BRACKET. NOT ONLY A FAST, UP-FRONT INSTALL BUT GIVES A CLEAN, UNIFORM LOOK THAT ESSENTIALLY INTEGRATES THE SPEAKER AND BRACKET TOGETHER AS ONE.

THE TRACTRIX HORN

KLIPSCH USES A MODIFIED TRACTRIX EQUATION HORN GEOMETRY ON ITS DISTRIBUTED AUDIO SPEAKERS WHICH GAINS THE BENEFITS OF THREE DISTINCT HORN TYPES AND ALLOWS THE SOUND WAVE TO RELEASE FROM THE HORN WITH MINIMAL REFLECTIONS BACK INTO THE HORN. THIS, COMBINED WITH THE REDUCED DEPTH OF THE TRACTRIX HORN IN RELATION TO OTHERS, FURTHER REDUCES DISTORTION AND IMPROVES FREQUENCY RESPONSE AND OVERALL SOUND CLARITY, EVEN AT LOW BACKGROUND VOLUMES.

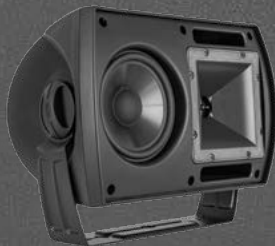


THE TRACTRIX CURVE



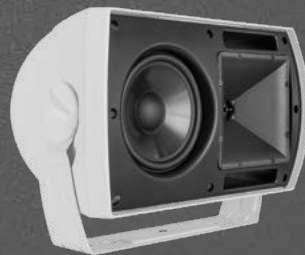
CA SPEAKERS

FOR YEARS, KLIPSCH CA SERIES SPEAKERS HAVE SET THE PROPER MOOD FOR SMALL BOUTIQUES TO MEGA SPORTS BARS TO OUTDOOR MALLS IN THOUSANDS OF INSTALLATIONS AROUND THE WORLD. WHETHER ON THEIR OWN OR ENHANCED WITH THEIR MATCHING SUBWOOFER THEY ARE KNOWN FOR HIGH-PERFORMANCE IN BOTH SOUND AND DURABILITY. 90° X 90° TRACTRIX® HORNS ALLOW THE SPEAKERS TO BE MOUNTED HORIZONTALLY OR VERTICALLY WITHOUT AFFECTING COVERAGE PATTERNS. HIGH-QUALITY MULTI-TAP TRANSFORMERS WITH 8 OHM BYPASSES LET CLEAN, REALISTIC BASS SHINE THROUGH AT ALL VOLUME LEVELS. ALL MODELS ARE IN DURABLE, UV-RESISTANT ALL-WEATHER BLACK OR WHITE PAINTABLE ABS ENCLOSURES COMPLIMENTED BY HIGH-STRENGTH, ZINC C-BRACKETS.



CA-525-T

- Very high sensitivity and power handling
- Built-in 30-Watt, 70V/100V high quality multi-tap transformer with 8-ohm bypass
- Black or White paintable UV-resistant, talc-filled PP enclosure with rustproof aluminum grille
- 90° x 90° Tractrix® horn tweeter for clean, clear highs
- Supplied with C-style mounting bracket and stainless steel hardware
- Available in Black or White

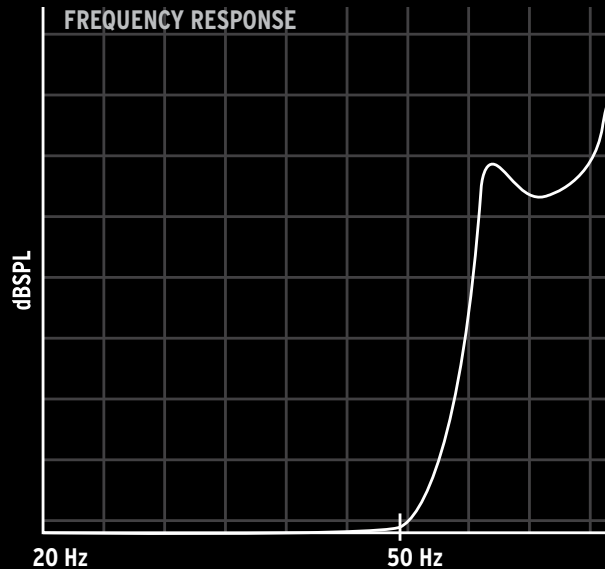


CA-650-T

- The most popular CA series speaker
- 90° x 90° Tractrix® horn tweeter for clean, clear highs
- Very high sensitivity and power handling
- Built-in 60-Watt, 70V/100V high quality multi-tap transformer with 8-ohm bypass
- Supplied with C-style mounting bracket and stainless steel hardware
- Black or White paintable UV-resistant, talc-filled PP enclosure with rustproof aluminum grille
- Available in Black or White



CA SPEAKERS



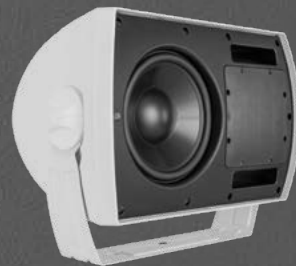
HIGH QUALITY SPEAKER TRANSFORMERS

THE USE OF LESS EXPENSIVE TRANSFORMERS IN SPEAKERS IN A 70/100V SYSTEM CAN SEVERELY DEGRADE FREQUENCY RESPONSE, ESPECIALLY IN LOW-END (BASS) RESPONSE, DUE TO LIMITS OF THE TRANSFORMER'S CORE, LEADING TO CORE SATURATION. KLIPSCH USES ONLY HIGH-QUALITY, LOW LOSS TRANSFORMERS WITH A MUCH HIGHER CORE SATURATION LIMIT IN OUR DISTRIBUTED AUDIO SPEAKERS, SIGNIFICANTLY REDUCING LOW-FREQUENCY COMPRESSION AND DISTORTION.



CA-800-T

- Paintable UV-resistant, talc-filled PP enclosure with rustproof aluminum grille
- Very high sensitivity and power handling
- Built-in 60-Watt, 70V/100V high quality multi-tap transformer with 8-ohm bypass
- 90° x 90° Tractrix® horn tweeter for clean, clear highs
- Supplied with C-style mounting bracket and stainless steel hardware
- Available in Black or White



CA-800-TSW

- All-purpose 8-inch passive subwoofer
- Built-in 60-Watt, 70V/100V multi-tap transformer with 8-ohm bypass
- High quality, low-saturation transformer allows for realistic, deep bass
- Built-in 120 Hz low pass filter
- Very high sensitivity and power handling
- Supplied with C-style mounting bracket and stainless steel hardware
- Works perfectly with both CA series and CPT series speaker systems
- Available in Black or White

Klipsch[®]

IN-CEILING SPEAKERS

WHEN THE BENEFITS OF IN-CEILING SPEAKERS CAN BE REALIZED IN A DISTRIBUTED AUDIO SYSTEM, KLIPSCH IC MODELS PROVIDE EVEN, FULL FREQUENCY COVERAGE WITH CLEAR, LOW DISTORTION SOUND. TWO MODELS INCORPORATE OUR EXCLUSIVE TRACTRIX® HORN WITH ELLIPSES, OR "MUMPS" WHICH FURTHER ENHANCE EVEN COVERAGE OF ALL HORN-GENERATED FREQUENCIES. ALL MODELS UTILIZE BOTH TRACTRIX PORTS AND HIGH-QUALITY TRANSFORMERS WITH LESS COMPRESSION FOR CLEAN, DEEP BASS OUTPUT WITH LESS DISTORTION. ALL MODELS INCLUDE MULTIPLE, FRONT-ACCESS, TAP SETTINGS WITH 8 OHM BYPASSES. REDUCED HEIGHT BACKCANS FIT INTO TIGHTER CEILING AREAS AND ALL MODELS ARE UL-2023 AND UL-1480 CERTIFIED. THE IC MODELS INCLUDE AN INTEGRATED BACKCAN AND A TILEBRIDGE FOR WHENEVER ADDITIONAL CEILING REINFORCEMENT IS REQUIRED.



IC-400-T

- Compact design simplifies low-ceiling mounting
- Deep bass with less compression
- Tractrix® horn design for production-oriented applications
- Front-access, high quality multi-tap transformer with 8 ohm bypass
- Pairs well with Klipsch surface mount speakers
- Works with Klipsch KPH-525 Pendant Housing for high/no suspended ceiling installs
- Pre-construction Mud Ring Kit available
- Available in Black or White



IC-525-T

- Deep bass with less compression
- Horn-loaded for clear sound in any location
- Front access, high quality multi-tap transformer with 8 ohm bypass
- Pairs well with Klipsch surface mount speakers
- Works with Klipsch KPH-525 Pendant Housing for high/no suspended ceiling installs
- Pre-construction Mud Ring Kit available
- Available in Black or White

TRACTRIX PORTS

JUST AS THE TRACTRIX CURVATURE DECREASES REFLECTIONS BACK INTO THE HORN FOR GREATER CLARITY, THE TRACTRIX PORTS ON ALL THREE KLIPSCH IN-CEILING DISTRIBUTED AUDIO SPEAKERS SIGNIFICANTLY REDUCE PORT "CHUFFING" AND ALLOW MORE OUTPUT BEFORE COMPRESSION THAN TYPICAL PORTS.





"MUMPS" HORNS

THE ADDITION OF ELLIPSES OR "MUMPS" MOLDED INTO CALCULATED AREAS OF THE TRACTRIX HORN ON THE IC-525-T AND IC-650-T FURTHER ENHANCES EVEN FREQUENCY DISPERSION ACROSS THE HORN'S COVERAGE AREA BY MODIFYING THE PROFILE OF THE HORN'S SHAPE TO PREVENT LOWER-FREQUENCY SOUNDS FROM "PULLING AWAY" FROM THE HORN'S BOUNDARY. THIS PATENTED GEOMETRIC DESIGN ALLOWS ALL HORN-GENERATED FREQUENCIES TO FOLLOW THE HORN CURVATURE AND PROVIDES THE MOST EVEN TOTAL COVERAGE IN A GIVEN AREA.



IN-CEILING SPEAKERS

IC-650-T



- Deep bass with less compression
- Horn-loaded for clear sound in any location
- Front access, high quality multi-tap transformer with 8 ohm bypass
- Pairs well with Klipsch surface mount speakers
- Pre-construction Mud Ring Kit available
- Available in Black or White

IC-SW-8T2



- Unique transformerless 4 voice coil, 70V/100V capability
- Bandpass design for low-distortion
- Extended, powerful bass
- Very high 111dB output capability
- Single-input 4-ohm or dual-input 8-ohm operation
- ABS baffle with removable, paintable power-coated aluminum grille
- Pre-construction Mud Ring Kit available

KPH-525



When overhead sound distribution is a challenge due to either a high or a lack of a suspended ceiling, the Klipsch KPH-525 Pendant Housing combines with either the Klipsch IC-400-T or IC-525-T In-Ceiling speaker for an aesthetic, great sounding solution.

- Aluminum Pendant Housing in Black, White or paintable for customization
- Designed to specifically house either the Klipsch IC-400-T or IC-525-T In-Ceiling 70/100 Volt speakers
- Perfect for high-ceiling structures or areas with no suspended ceiling for direct, overhead distributed sound
- Includes the necessary mounting hardware for typical suspended installation scenarios

A BETTER DISTRIBUTED AUDIO SUBWOOFER SOLUTION

THE KLIPSCH IC-SW-8T2 70/100V SUBWOOFER UTILIZES A UNIQUE TRANSFORMERLESS DESIGN FOR THE HIGHEST-PERFORMANCE IN EITHER BACKGROUND OR FOREGROUND MUSIC APPLICATIONS. SINCE TRANSFORMERS, THROUGH COMPRESSION THAT ESPECIALLY OCCURS AT LOW FREQUENCIES, CAN SEVERELY LIMIT A SUBWOOFER'S CAPABILITIES, THIS APPLICATION IS THE PERFECT SOLUTION WHEN BUILDING A GREAT SOUNDING COMMERCIAL SYSTEM. THE IC-SW-8T2 ALSO EMPLOYS A BANDPASS DESIGN THAT UTILIZES A PASSIVE RADIATOR INSTEAD OF A PORT, ELIMINATING TURBULENCE AND THE RESULTING DISTORTION OFTEN PRESENT IN PORTED DESIGNS. THE IC-SW-8T2 ALSO HAS THE ABILITY TO EASILY SWITCH FROM LOW IMPEDANCE TO HIGH IMPEDANCE DISTRIBUTED-LINE APPLICATIONS AS WELL AS MONO AND TWO-CHANNEL INPUTS IN LOW IMPEDANCE MODES.





Klipsch[®]

SPECIFICATIONS

CP-4T

CP-6T

FREQUENCY RESPONSE ¹	100Hz-22k Hz +/- 3dB	83Hz-22k Hz +/- 3dB
POWER HANDLING ²	5 watt fixed @ 70V/10 watt fixed @ 100V	75 w (300 peak) (8 ohm bypass)
MAX CONTINUOUS OUTPUT ³	94 dB @ 70V/97 dB @ 100V	111 dB (8 ohm bypass)
SENSITIVITY ⁴	91 dB	94 dB
NOMINAL IMPEDANCE	N/A	8 ohm (8 ohm bypass)
TWEETER	.75" (1.9cm) aluminum dome tweeter	.75" (1.9cm) Aluminum dome tweeter
HIGH FREQUENCY HORN	90° x 90° Tractrix® Horn	90° x 90° Tractrix® Horn
WOOFER	3.5" (8.9cm) long-throw IMG woofer	5.25" (13.3cm) long-throw IMG woofer
CROSSOVER FREQUENCY	3.2kHz 12dB octave	3kHz 12dB octave
TAP SETTINGS	5 watt fixed @ 70V/10 watt fixed @ 100V	3.75w, 7.5w, 15w, 30w @ 70V / 7w, 15w, 30w @ 100V
ENCLOSURE TYPE	Bass-reflex via dual front-firing ports Talc-filled PPC	Bass-reflex via dual front-firing ports Talc-filled PPC
WEIGHT	4.8 lbs. (2.2kg)	6.9 lbs. (3.1kg)
DIMENSIONS	8.8" (22.4cm) H x 5.5" (14.0cm) W x 4.7" (11.9cm) D	11.0" (27.9cm) H x 7.0" (17.8cm) W x 6.1" (15.5cm) D
DIMENSIONS WITH WALL MOUNT	8.8" (22.4cm) H x 5.5" (14.0cm) W x 5.5" (14.0cm) D	11.0" (27.9cm) H x 7.0" (17.8cm) W x 6.9" (17.5cm) D
FINISHES	White/Black enclosure and grill	White/Black enclosure and grill
WIRE GAUGE ACCOMMODATED	16	16



¹ 3M, half space anechoic

² AES standard, continuous pink noise 50Hz - 10k Hz, 6dB peaks

³ Calculated at 1M at power handling power input, 8 ohm mode

⁴ SPL at 1M, half space anechoic with 2.83V input

SPECIFICATIONS

	CA-525-T	CA-650-T	CA-800-T	CA-800-TSW
FREQUENCY RESPONSE ¹	75-15k Hz +/- 4dB	69-20k Hz +/- 4dB	64Hz-17.5k Hz +/- 4dB	51Hz-135 Hz +/- 4dB
POWER HANDLING ²	75 w (8 ohm bypass)	85 w (8 ohm bypass)	100 w (8 ohm bypass)	150 w (8 ohm bypass)
MAX CONTINUOUS OUTPUT ³	110dB	111dB	113dB	111dB
SENSITIVITY ⁴	94dB	95dB	96dB	92dB
NOMINAL IMPEDANCE	8 ohm (8 ohm bypass)	8 ohm (8 ohm bypass)	8 ohm (8 ohm bypass)	6 ohms (4 ohm min @ 92Hz)
TWEETER	1" (2.54cm) Titanium diaphragm compression driver	1" (2.54cm) Titanium diaphragm compression driver	1" (2.54cm) Titanium diaphragm compression driver	
HIGH FREQUENCY HORN	90° x 90° Tractrix® Horn	90° x 90° Tractrix® Horn	90° x 90° Tractrix® Horn	
WOOFER	5.25" (13.3cm) IMG woofer	6.5" (16.5cm) IMG woofer	8" (20.32cm) IMG woofer	8" (20.32cm) IMG woofer
CROSSOVER FREQUENCY	2900Hz 12dB octave lowpass	1900Hz 12dB octave lowpass	1900Hz 12dB octave lowpass	120Hz 12dB octave lowpass
TAP SETTINGS	1.8w, 3.75w, 7.5w, 15w, 30w @ 70V / 3.75w, 7w, 15w, 30w @ 100V	7.5w, 15w, 30w, 60w @ 70V / 3.75w, 7.5w, 15w, 30w, 60w @ 100V	3.75w, 7.5w, 15w, 30w, 60w @ 70V / 3.75w, 7.5w, 15w, 30w, 60w @ 100V	3.75w, 7.5w, 15w, 30w, 60w @ 70V / 3.75w, 7.5w, 15w, 30w, 60w @ 100V
ENCLOSURE TYPE	Bass-reflex via dual front-firing ports	Bass-reflex via dual front-firing ports	Bass-reflex via dual front-firing ports	Bass-reflex via dual front-firing ports
ENCLOSURE MATERIAL	Talc-filled PP	Talc-filled PP	Talc-filled PP	Talc-filled PP
WEIGHT	9 lbs. (4.1kg)	13 lbs. (5.9kg)	18 lbs. (8.16kg)	20 lbs. (9.07kg)
DIMENSIONS	8.13" (20.64cm) H x 12.0" (30.48cm) W x 6.1" (15.5cm) D	9.5" (24.13cm) H x 15.2" (38.56cm) W x 10.88" (27.62cm) D	11.13" (28.26cm) H x 16.38" (41.53cm) W x 12.31" (31.27cm) D	11.13" (28.26cm) H x 16.38" (41.53cm) W x 12.31" (31.27cm) D
FINISHES	White/Black enclosure and grill	White/Black enclosure and grill	White/Black enclosure and grill	White/Black enclosure and grill
WIRE GAUGE ACCOMMODATED	14 AWG	14 AWG	14 AWG	14 AWG

¹ 3M, half space anechoic

² AES standard, continuous pink noise 50Hz - 10k Hz, 6dB peaks

³ Calculated at 1M at power handling power input, 8 ohm mode

⁴ SPL at 1M, half space anechoic with 2.83V input



SPECIFICATIONS

	IC-400-T	IC-525-T	IC-650-T	IC-SW-8T2
FREQUENCY RESPONSE ¹	70-20k Hz +/- 4dB	65-20k Hz +/- 4dB	50-20k Hz +/- 4dB	50Hz-130Hz 4dB
POWER HANDLING ²	50 w (8 ohm bypass)	65 w (8 ohm bypass)	80 w (8 ohm bypass)	150 w (8 ohm bypass)
MAX CONTINUOUS OUTPUT ³	100dB	104dB	106dB	111dB
SENSITIVITY ⁴	86dB	89dB	90dB	92dB
NOMINAL IMPEDANCE	8 ohm (8 ohm bypass)	8 ohm (8 ohm bypass)	8 ohm (8 ohm bypass)	6 ohms
TWEETER	1" (2.54cm) Titanium diaphragm compression driver	1" (2.54cm) Titanium diaphragm compression driver	1" (2.54cm) Titanium diaphragm compression driver	8" (20.32cm) woofer and 8" (20.32) drone
HIGH FREQUENCY HORN	90° x 90° Tractrix® horn	90° x 90° Tractrix® Horn	90° x 90° Tractrix® Horn	
WOOFER	5" (12.7cm) woofer	5.25" (12.7cm) woofer	6.5" (16.51cm) woofer	
TAP SETTINGS	1.9w, 3.8w, 7.5w, 15w @ 70V / 3.8w, 7.5w @ 100V	3.8w, 7.5, 15w, 30w @ 70V / 7.5w, 15w, 30w @ 100V	7.5w, 15w, 30w, 60w @ 70V / 15w, 30w, 60w @ 100V	30w, 60w @ 70V / 60w, 120w @ 100V
ENCLOSURE TYPE	Bass-reflex via Tractrix port	Bass-reflex via Tractrix port	Bass-reflex via Tractrix port	Bandpass via drone
WEIGHT	6.25 lbs. (2.83kg)	8.25 lbs. (3.74kg)	11.25 lbs. (7.14kg)	23 lbs. (10.43kg)
CUTOUT DIMENSIONS	9.13" (23.18cm) diameter	9.15" (23.18cm) diameter	10.13" (25.72cm) diameter	12.5" (31.75cm) diameter
MOUNTING DEPTH	7.31" (18.58cm)	8.31" (21.12cm)	10.63" (27cm)	12.63" (32.06cm)
OVERALL DEPTH	7.5" (19.05cm)	8.5" (21.59cm)	10.94" (27.79cm)	13" (33.02cm)
OVERALL WIDTH	10.75" (27.31cm)	10.75" (27.30cm)	10.75" (27.31cm)	14.2" (36.07cm)
THRU HOLE WIDTH	9" (22.86cm)	9" (22.86cm)	9" (22.86cm)	12.4" (31.50cm)
FINISHES	White/Black	White/Black	White/Black	White
WIRE GAUGE ACCOMMODATED	14 AWG	14 AWG	14 AWG	14 AWG
PRE-CONSTRUCTION MUD RING	1010413	1010413	1010414	061347

¹ 3M, half space anechoic

² AES standard, continuous pink noise 50Hz - 10k Hz, 6dB peaks

³ Calculated at 1M at power handling power input, 8 ohm mode

⁴ SPL at 1M, half space anechoic with 2.83V input

A close-up, black and white photograph of a Klipsch speaker driver, showing the intricate details of the cone and the surrounding frame. The lighting creates strong highlights and shadows, emphasizing the texture and curvature of the speaker components.

Klipsch®

3502 WOODVIEW TRACE, INDIANAPOLIS, IN, USA

KLIPSCH.COM/PRO

1-800-KLIPSCH ©2014 KLIPSCH GROUP, INC. ALL RIGHTS RESERVED. KLIPSCH, KEEPERS OF THE SOUND AND TRACTRIX ARE REGISTERED TRADEMARKS OF KLIPSCH GROUP, INC. A WHOLLY-OWNED SUBSIDIARY OF VOXX INTERNATIONAL CORPORATION.



Klipsch[®]

KEEPERS OF THE SOUND[®]