

## Low-Voltage Enclosure

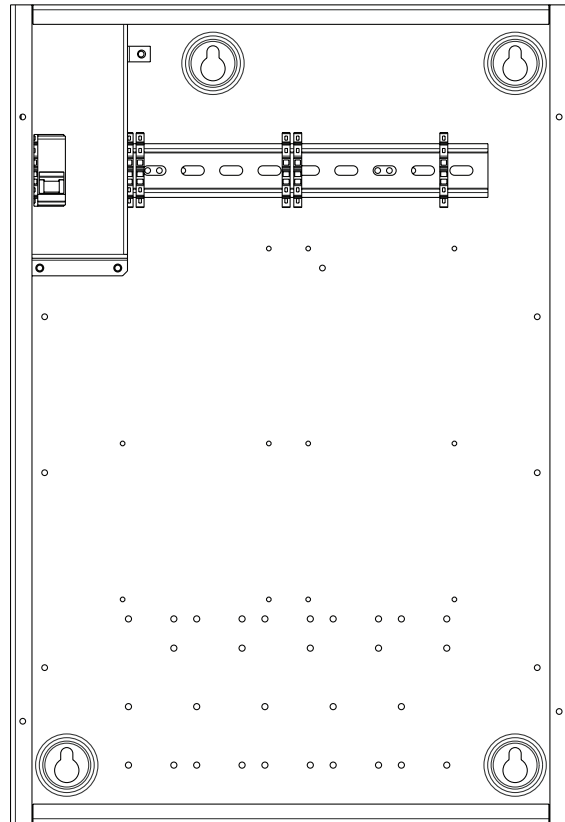
Low-voltage enclosures may be either surface-mounted or flush-mounted in an electrical closet or equipment room. Both the number of enclosures and the types of components within them are customized to fit the size, lighting plan, and design of a home. Low-voltage enclosures can be distributed throughout the home near the rooms they are controlling, to provide maximum flexibility during installation of the low-voltage wiring. Low-voltage enclosures cannot house remote power modules (RPMs).

### 21-inch Low-Voltage Enclosure (Model # HQ-LV21-120)

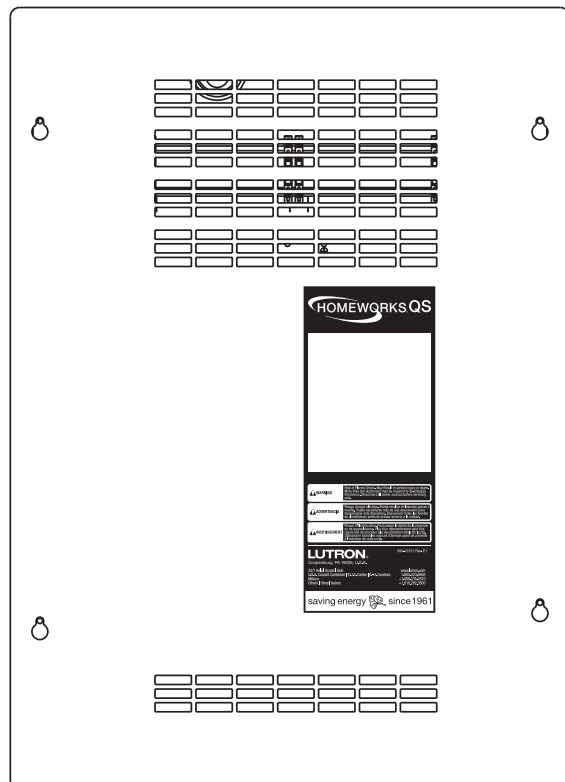
The twenty-one-inch low-voltage enclosure provides a compact housing for mounting up to two *HomeWorks* QS processors or up to two system interfaces and up to five wire landing boards (QS-WLB). The enclosure accepts one 120 V~ feed to power the panel, which is self-contained in an enclosed area, thus allowing access to only the low-voltage connections when the enclosure cover is removed.

### Model Number

HQ-LV21-120 Low-Voltage Enclosure



Low-Voltage Enclosure (HQ-LV21-120)



Low-Voltage Enclosure Cover (HQ-LV21-120)

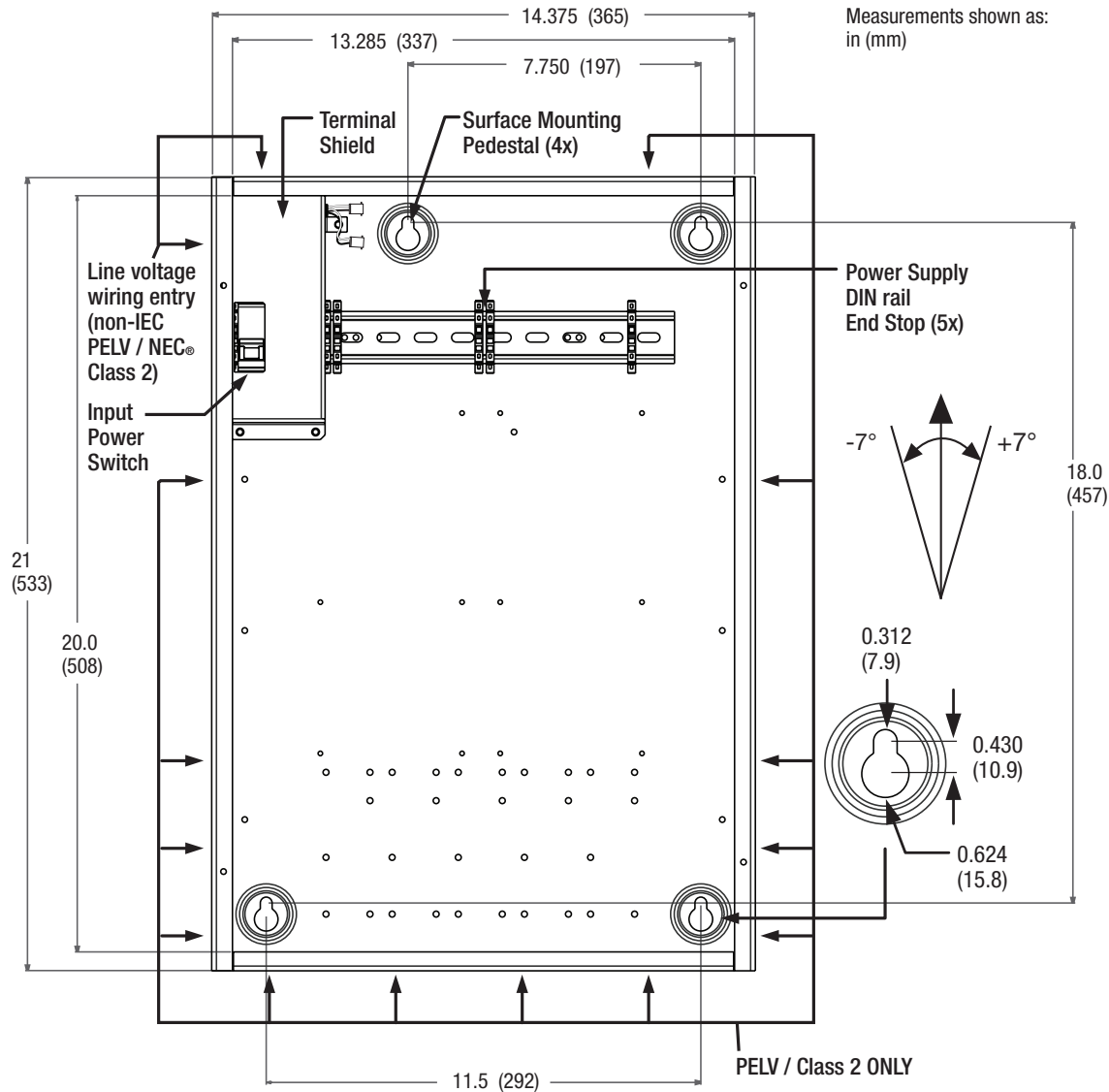
# Low-Voltage Enclosure

## Specifications

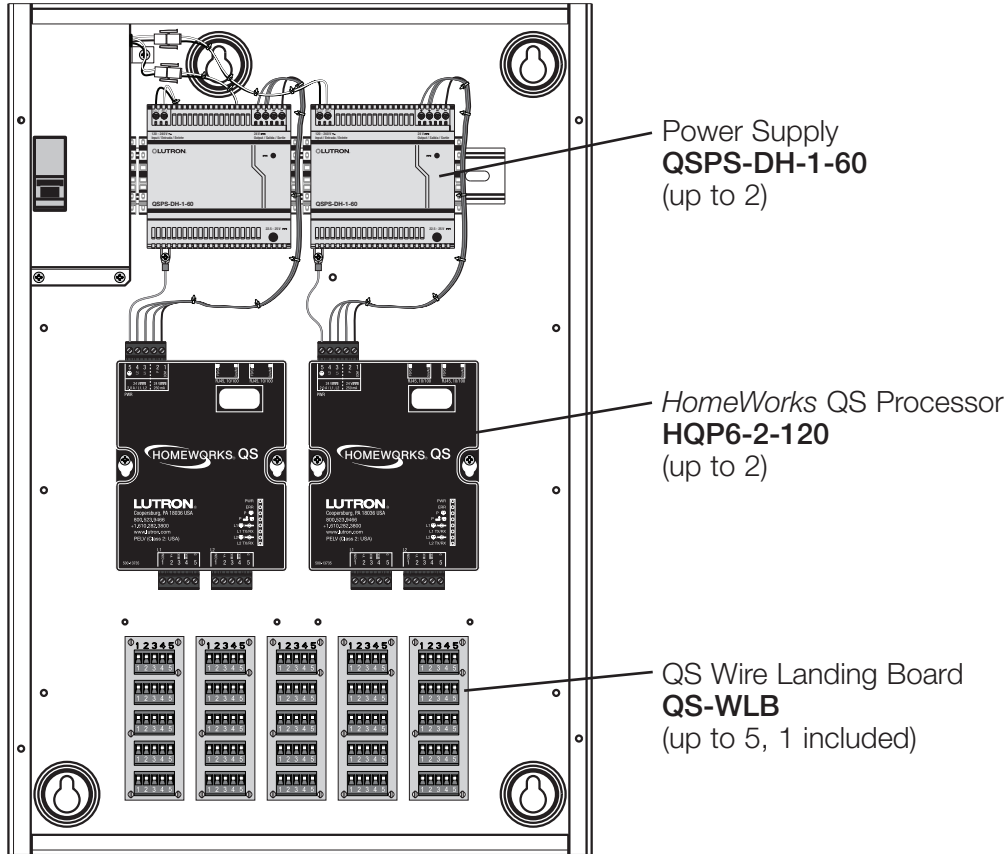
<b>Model Number</b>	HQ-LV21-120
<b>Power</b>	120 V~ Power Input 50/60 Hz 2 A
<b>Regulatory Approvals</b>	UL, CSA, NOM
<b>Environment</b>	Ambient operating temperature: 32 °F to 104 °F (0 °C to 40 °C) Ambient operating humidity: 0-90% humidity, non-condensing. Indoor use only.
<b>Mounting</b>	<p>Enclosure may be surface-mounted or recess-mounted. Enclosure fits between standard 16 in (41 cm) on-center stud framing. Mount the enclosure so that line-voltage wiring will be at least 6 feet (1.8 m) from audio or electronic equipment and wiring.</p> <p><b>Mount Enclosure</b> using one of the following methods (mounting hardware is not provided):</p> <p><b>a. Surface Mount</b> – Use keyholes with bolts sufficient for 100 lb (45 kg) load, 1/4 in (M6) bolts recommended.</p> <p><b>b. Recess Mount</b> – Use screws sufficient for 100 lb (45 kg) through the corners of the enclosure. Mount enclosure fully into the stud bay, with the back flush against the inner wall surface. Enclosure is 4.088 in (104 mm) deep past cover mounting tabs (including pedestal). Enclosure cover dimensions are 21.5 in x 15.386 in (546 mm x 391 mm).</p> <p><b>NOTICE:</b> This equipment is air-cooled. Mount in a location where the vented cover will not be blocked. 12 in (305 mm) of clearance in front of the vents is required.</p> <p><b>NOTICE:</b> Power supply will hum slightly and internal relays will click while in use. Mount in a location where such noise is acceptable.</p>
<b>Dimensions</b>	<p><b>Enclosure:</b> 21 in (533 mm) x 14.375 in (365 mm) x 4.088 in (104 mm)</p> <p><b>Cover:</b> 21.5 in (546 mm) x 15.386 in (391 mm)</p>
<b>Construction</b>	<p><b>Enclosure:</b> 16-gauge powder coated sheet metal.</p> <p><b>Cover:</b> 16-gauge powder coated metal cover. Cover is attached using four philips-head screws.</p>
<b>Capacity</b>	Enclosure can accommodate two processors or system interface devices and five wire landing boards (QS-WLB). Examples: 1 Processor and 1 System Interface or 2 Processors or 2 Interfaces
<b>Line-Voltage Connections</b>	Use copper wire only, supply conductors rated at 167 °F (75 °C). Use supplied wire connections to connect to corresponding power supply harnesses.
<b>Warranty</b>	8 Year Limited Warranty. <a href="http://www.lutron.com/resiinfo">http://www.lutron.com/resiinfo</a>

# Low-Voltage Enclosure

## Dimensions and Mounting



# Low-Voltage Enclosure Configuration



## Power Draw Information

Power Supply	Power Draw Units Supplied
QSPS-DH-1-60	75 PDU

Device	Power Draw Units Required (per device)
Processor HQP6-2-120	8 PDU
QSE-CI-NWK-E	2 PDU
QSE-IO	3 PDU