

HomeWorks® QS RF seeTouch® Designer keypads

HomeWorks® QS RF seeTouch® Designer keypads provide homeowners with a simple and elegant way to operate lights, shades / draperies, motorized screens, thermostats, and many other devices.

HomeWorks® QS RF seeTouch® Designer keypads feature large, easy-to-use buttons, plus a unique backlit engraving option that makes the keypads readable any time of the day or night. seeTouch® keypad buttons are rounded, allowing engraving to be displayed at an upward angle, increasing readability.

Replacement Kits are available in a variety of colors and with custom engraving to clearly identify each button's function. The flexible design of the keypads allow the color, number of buttons, and the configuration of the buttons to be changed by installing a new engraved button kit.

Use Lutron® Designer (Claro® or Satin Colors®) wallplates. Wallplates are sold separately. Lutron® Claro® and Satin Colors® wallplates snap on with no visible means of attachment.



Model Numbers

HQRD-W1B-XX*	1 Button Keypad	HQRD-W5BRL-XX*	5 Button with Raise/Lower Keypad
RKD-W1B-XX*-E	Engraved Replacement Kit	RKD-W5BRL-XX*-E	Engraved Replacement Kit
HQRD-W2BS-XX*	2 Button Keypad	HQRD-W6B-XX*	6 Button Keypad
RKD-W2BS-XX*-E	Engraved Replacement Kit	RKD-W6B-XX*-E	Engraved Replacement Kit
HQRD-W3BS-XX*	3 Button Keypad	HQRD-W6BRL-XX*	6 Button with Raise/Lower Keypad
RKD-W3BS-XX*-E	Engraved Replacement Kit	RKD-W6BRL-XX*-E	Engraved Replacement Kit
HQRD-W3BSRL-XX*	3 Button with Raise/Lower Keypad	HQRD-W7B-XX*	7 Button Keypad
RKD-W3BSRL-XX*-E	Engraved Replacement Kit	RKD-W7B-XX*-E	Engraved Replacement Kit
HQRD-W4BS-XX*	4 Button Keypad	HQRD-W1RLD-XX*	Dual Group with Raise/Lower Keypad
RKD-W4BS-XX*-E	Engraved Replacement Kit	RKD-W1RLD-XX*-E	Engraved Replacement Kit
HQRD-W3S-XX*	3 Scene with Raise/Lower Keypad	HQRD-W2RLD-XX*	Dual Group with Dual Raise/Lower Keypad
RKD-W3S-XX*-E	Engraved Replacement Kit	RKD-W2RLD-XX*-E	Engraved Replacement Kit
HQRD-W4S-XX*	4 Scene with Raise/Lower Keypad	HQRD-W3BD-XX*	Dual Group Keypad
RKD-W4S-XX*-E	Engraved Replacement Kit	RKD-W3BD-XX*-E	Engraved Replacement Kit
HQRD-W5B-XX*	5 Button Keypad		
RKD-W5B-XX*-E	Engraved Replacement Kit		

* "XX" in the model number represents color/finish code. See **Colors and Finishes** at end of document.

HomeWorks® QS RF seeTouch® Designer keypads

Specifications

Model Numbers	<p>Keypads: HQRD-W1B, HQRD-W2BS, HQRD-W3BS, HQRD-W3BSRL, HQRD-W4BS, HQRD-W3S, HQRD-W4S, HQRD-W5B, HQRD-W5BRL, HQRD-W6B, HQRD-W6BRL, HQRD-W7B, HQRD-W1RLD, HQRD-W2RLD, HQRD-W3BD</p> <p>Replacement Kits: RKD-W1B-XX-E, RKD-W2BS-XX-E, RKD-W3BS-XX-E, RKD-W3BSRL-XX-E, RKD-W4BS-XX-E, RKD-W3S-XX-E, RKD-W4S-XX-E, RKD-W5B-XX-E, RKD-W5BRL-XX-E, RKD-W6B-XX-E, RKD-W6BRL-XX-E, RKD-W7B-XX-E, RKD-W1RLD-XX-E, RKD-W2RLD-XX-E, RKD-W3BD-XX-E</p>
Power	120 V~ 50/60 Hz 0.5 A
Typical Power Consumption	0.6 W Test conditions: all backlights on medium-intensity, two LEDs on (two presets active), keypad powered at 120 V~
Regulatory Approvals	UL, CSA, NOM, FCC, IC, COFETEL
Environment	Ambient operating temperature: 32 °F to 104 °F (0 °C to 40 °C), 0% to 90% humidity, non-condensing. Indoor use only.
Communications	HomeWorks® QS RF seeTouch® Designer keypads communicate with the system through Radio Frequency (RF) and must be located within 30 ft (9 m) of a repeater.
ESD Protection	Tested to withstand electrostatic discharge without damage or memory loss, in accordance with IEC 61000-4-2.
Surge Protection	Tested to withstand surge voltages without damage or loss of operation, in accordance with IEEE C62.41-1991 Recommended Practice on Surge Voltages in Low-Voltage AC Power Circuits.
Power Failure	Power failure memory: should power be interrupted, the keypad will return to its previous state when power is restored.
Mounting	Requires a U.S.A. wallbox. 3 1/2 in (89 mm) deep recommended, 2 1/4 in (57 mm) deep minimum.
Wiring	HomeWorks® QS RF seeTouch® Designer keypads require a 120 V~ hot and neutral wire connection.
Warranty	www.lutron.com/TechnicalDocumentLibrary/warranty.pdf

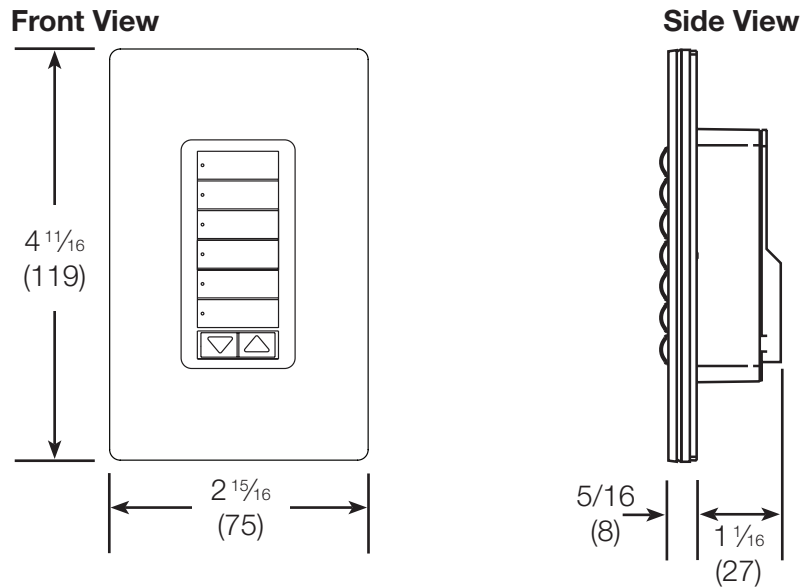
Design Features

- At the press of a single button, lights fade/turn ON or OFF to desired levels and shades/ draperies open or close to desired positions.
- Light levels and shade/drapery positions can be fine-tuned by pressing and holding the raise/lower buttons.
- Programmable to select whole-house or single room preset levels or positions.
- Green LEDs for status and button/engraving back-lighting.
- Adjustable back-light intensity.
- Prepaid engraving included. Redeemable for one engraved Replacement Kit.

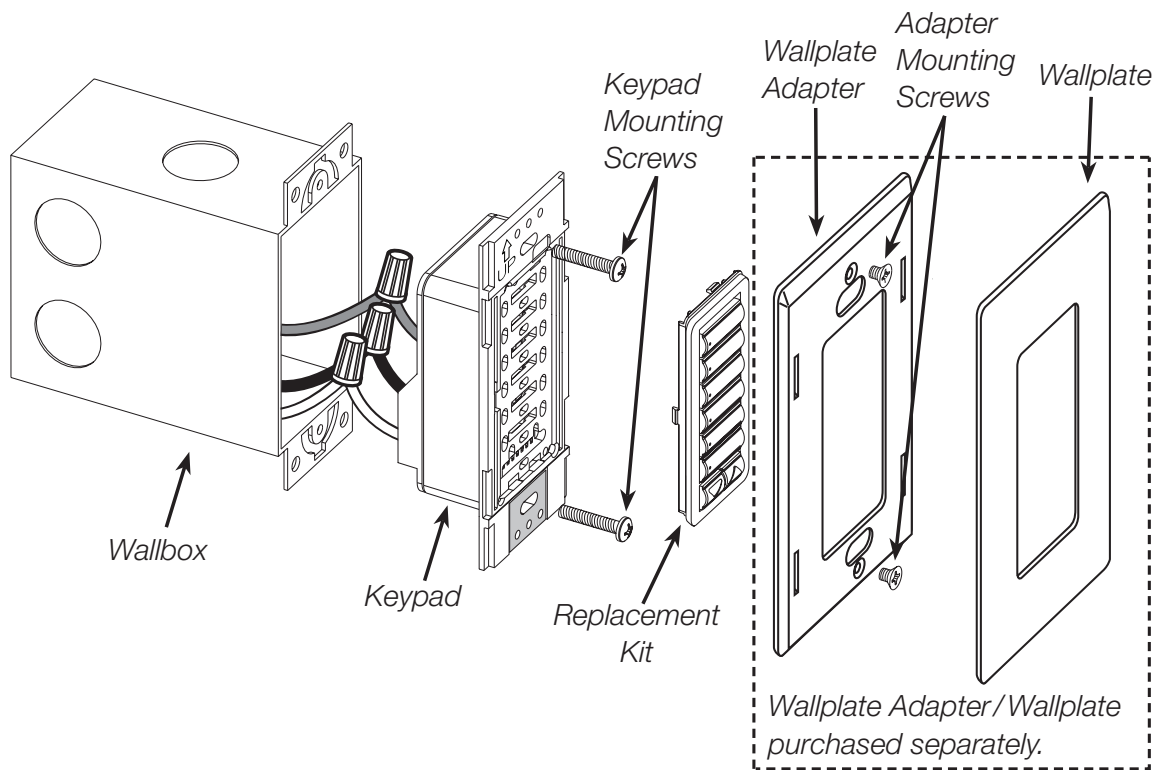
HomeWorks[®] QS RF seeTouch[®] Designer keypads

Dimensions

All dimensions are shown as $\frac{\text{in}}$
(mm)

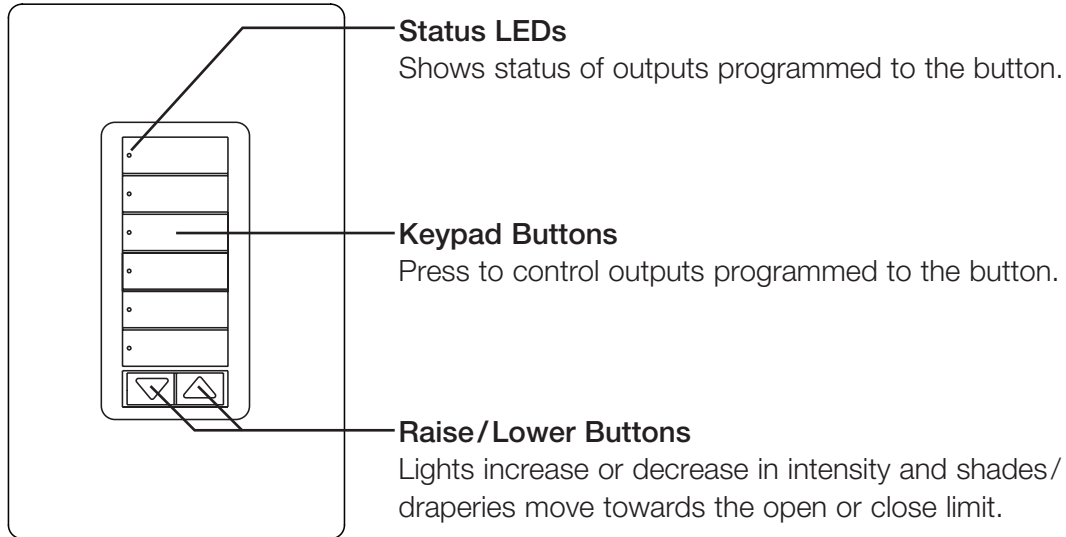


Mounting and Parts Identification

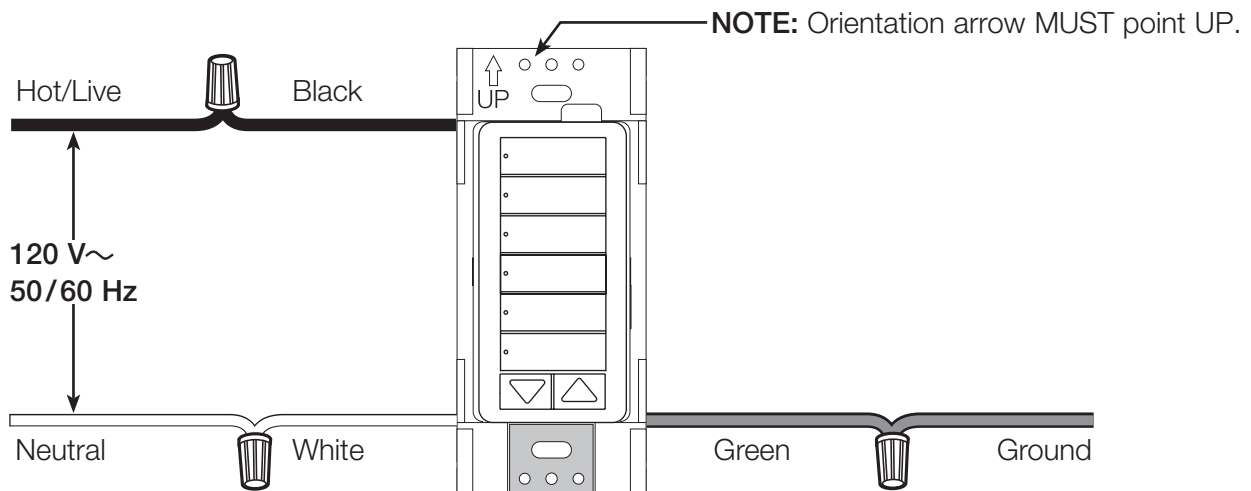


HomeWorks[®] QS RF seeTouch[®] Designer keypads

Operation



Wiring Diagram



HomeWorks[®] QS RF seeTouch[®] Designer keypads

Colors and Finishes

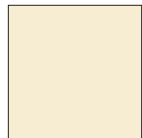
Gloss Finishes



White
WH



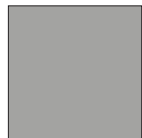
Ivory
IV



Almond
AL



Light Almond
LA



Gray
GR



Brown
BR



Black
BL

Satin Finishes



Hot
HT



Merlot
MR



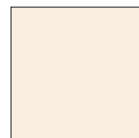
Plum
PL



Turquoise
TQ



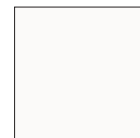
Taupe
TP



Eggshell
ES



Biscuit
BI



Snow
SW



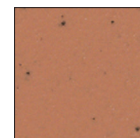
Palladium
PD



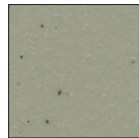
Midnight
MN



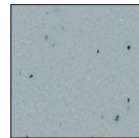
Sienna
SI



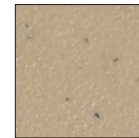
Terracotta
TC



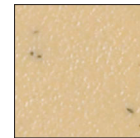
Greenbriar
GB



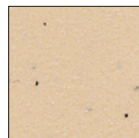
Bluestone
BG



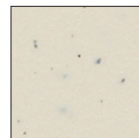
Mocha Stone
MS



Goldstone
GS



Desert Stone
DS



Stone
ST



Limestone
LS

- Due to printing limitations, colors and finishes shown cannot be guaranteed to perfectly match actual product colors.
- Color chip keychains are available for more precise color matching:
Gloss Finishes- DG-CK-1
Satin Finishes - SC-CK-1

Metal Finish (wallplate only)



Stainless Steel
SS

When using Stainless Steel wallplates, it is recommended to order the keypad in Midnight (MN).