

RadioRA 2 Maestro® Local Controls

RadioRA 2 Maestro local controls function much like standard dimmers and switches, but can be controlled as part of a lighting control system. Local lighting controls are useful in locations where single circuits of lighting need to be dimmed or switched.

RadioRA 2 Maestro dimmers incorporate advanced features such as fade on/fade off, long fade off, and rapid full on.

RadioRA 2 Maestro local controls include a Front Accessible Service Switch (FASS™) for safe lamp replacement. RadioRA 2 Maestro local controls install in single-pole or multi-location applications.

Use Lutron® Designer (Claro® or Satin Colors®) wallplates or designer-style wallplates from other manufacturers. Wallplates are sold separately. Lutron Claro and Satin Colors wallplates snap on with no visible means of attachment. RadioRA 2 Maestro local controls support color change kits.



Dimmer



Remote Dimmer



Switch



Remote Switch

Model Numbers

Dimmer

Incandescent/Magnetic Low-voltage

RRD-6D-XX* 600 W/600 VA Dimmer

RRD-10D-XX* 1000 W/1000 VA Dimmer

RRD-10ND-XX* 1000 W/1000 VA Neutral Dimmer

Switch

Lighting and motor loads

RRD-8ANS-XX* 8 A Lighting, 5.8 A Motor Neutral Electronic Switch

Accessory Controls

RD-RD-XX* Remote Dimmer

RD-RS-XX* Remote Switch

*RadioRA 2 Maestro local controls are available in 27 colors. Please see page 7 for color selections.

RadioRA 2 Maestro® Local Controls

Specifications

Model Numbers	RRD-6D-XX, RRD-10D-XX, RRD-10ND-XX, RRD-8ANS-XX, RD-RD-XX, RD-RS-XX
Power	120 V~ 50/60 Hz
Typical Power Consumption	Dimmer/Switch: 0.2 W Test conditions: load is off and nightlight mode is enabled. Remote Dimmer/Switch: 0 W Test conditions: load is off.
Regulatory Approvals	UL, CSA, NOM, FCC, IC, COFETEL
Environment	Ambient operating temperature: 32 °F to 104 °F (0 °C to 40 °C), 0%-90% humidity, non-condensing. Indoor use only.
Communications	Dimmers and switches communicate with the system through Radio Frequency (RF) and must be located within 30 ft (9 m) of a repeater. Remote dimmers/switches are not required to be within a specific range of a repeater.
ESD protection	Tested to withstand electrostatic discharge without damage or memory loss, in accordance with IEC 61000-4-2.
Surge Protection	Tested to withstand surge voltages without damage or loss of operation, in accordance with IEEE C62.41-1991 Recommended Practice on Surge Voltages in Low-Voltage AC Power Circuits.
Power Failure	Power failure memory: should power be interrupted, the control will return to its previous state when power is restored.
Mounting	Requires a U.S. wallbox. 3 1/2 in (89 mm) deep recommended, 2 1/4 in (57 mm) deep minimum.
Wiring	Uses conventional 3-way and 4-way wiring.
Warranty	1 Year Limited Warranty. http://www.lutron.com/resiinfo

Design Features

Dimmer

- On a single-tap, lights fade ON or OFF.
- On a double-tap, lights go to full ON.
- When ON, press and hold the tapswitch to engage the 30 second delayed long fade to OFF.
- Light levels can be fine-tuned by pressing and holding the dimming rocker until the desired light level is reached.
- Two-wire dimmers available.

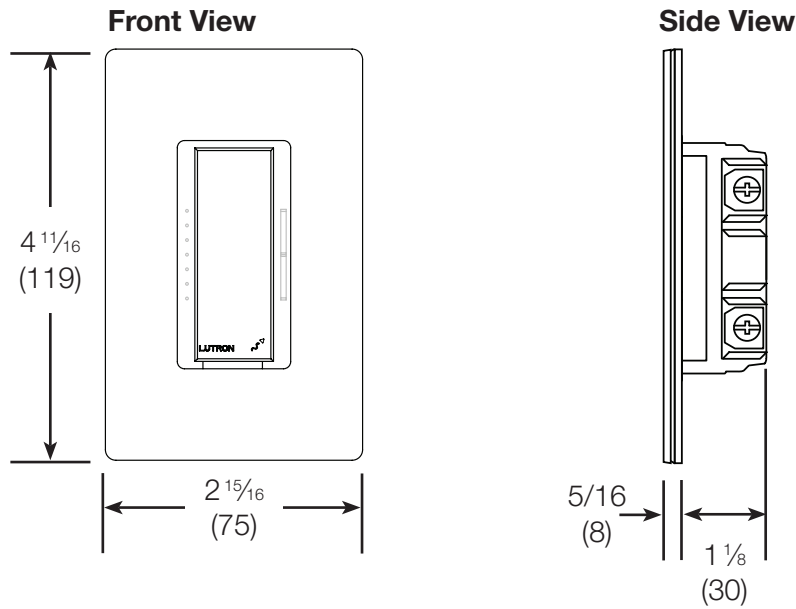
Switch

- On a single-tap, lights or motors turn ON or OFF.
- Requires a neutral connection.

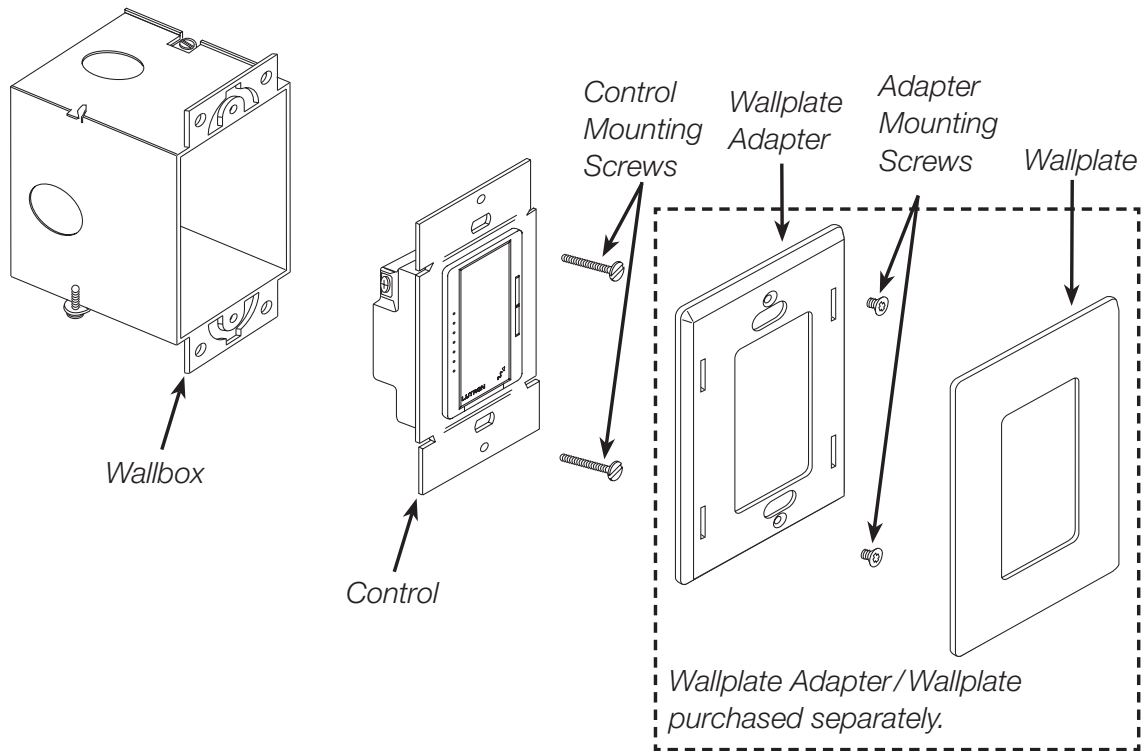
RadioRA 2 Maestro® Local Controls

Dimensions

All dimensions are shown as $\frac{\text{in}}$
(mm)



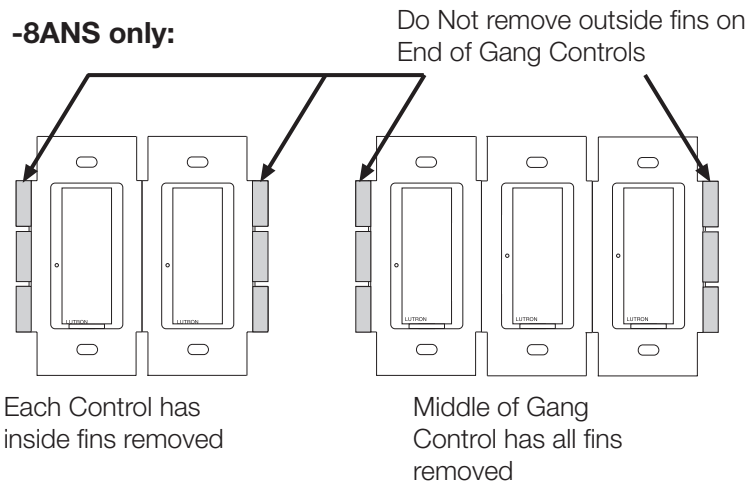
Mounting and Parts Identification



RadioRA 2 Maestro® Local Controls

Ganging and derating

When ganging with other controls in the same wallbox, derating is required. See **Load Type and Capacity** chart. Only -8ANS controls have fins that need to be removed for multigang installations. No other controls have fins, but they must still be derated in multigang installations.



Load type and capacity

Control	Load Type	Minimum Load	Not Ganged	End of Gang	Middle of Gang	Neutral Connection
RRD-6D ¹	Incand.	50 W	600 W	500 W	400 W	NO
	MLV ²	50 W/VA	450 W/ 600 VA	400 W/ 500 VA	300 W/ 400 VA	
RRD-10D ¹	Incand.	50 W	1000 W	800 W	650 W	NO
	MLV ²	50 W/VA	800 W/ 1000 VA	600 W/ 800 VA	500 W/ 650 VA	
RRD-10ND ¹	Incand.	10 W	1000 W	800 W	650 W	YES
	MLV ²	10 W/VA	800 W/ 1000 VA	600 W/ 800 VA	500 W/ 650 VA	
RRD-8ANS ³	Lighting	10 W	8 A	6.5 A	5 A	YES
	Motor	0.083 A	1/4 HP 5.8 A	1/4 HP 5.8 A	1/6 HP 4.4 A	

¹ Dimmer Load Type: -6D, -10D and -10ND are designed for use with permanently installed incandescent, magnetic low-voltage, or tungsten halogen only. Do not install dimmers to control receptacles or motor-operated appliances.

² Low-Voltage Applications: Use -6D, -10D and -10ND with magnetic (core and coil) low-voltage transformers only. Not for use with electronic (solid-state) low-voltage transformers. Operation of a low-voltage circuit with lamps inoperative or removed may result in transformer overheating and premature failure. Lutron strongly recommends the following:

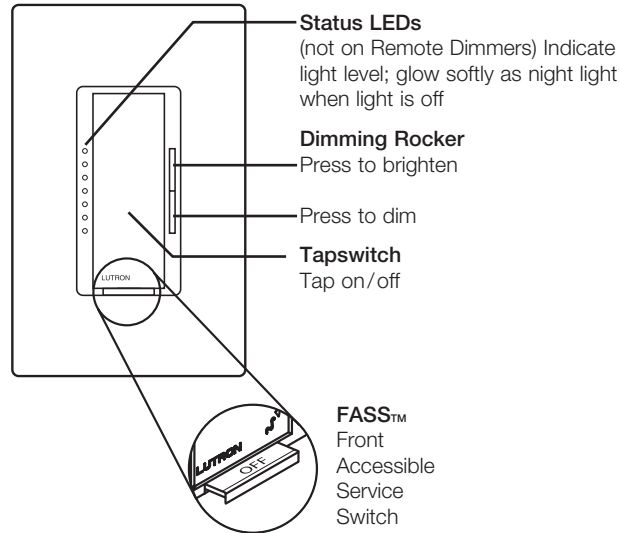
- Do not operate low-voltage circuits without operative lamps in place.
- Replace burned-out lamps as quickly as possible.
- Use transformers that incorporate thermal protection or fused transformer primary windings to prevent transformer failure due to overcurrent.

³ Switch Load Type: -8ANS is designed for use with permanently installed incandescent, magnetic low-voltage, electronic low-voltage, tungsten halogen, or fluorescent lighting loads and with motor loads up to 1/4 HP (5.8 A).

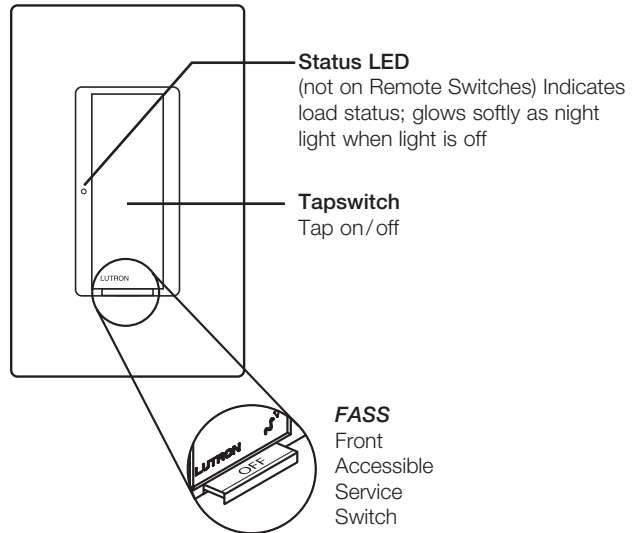
RadioRA 2 Maestro® Local Controls

Operation

Dimmer



Switch



IMPORTANT NOTICE:

FASS - Front Accessible Service Switch

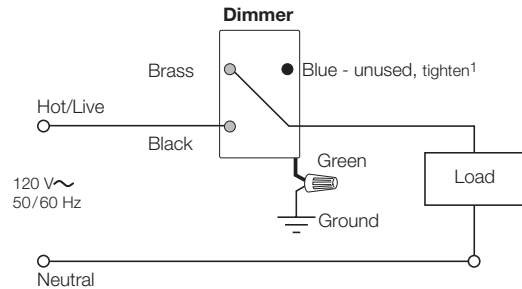
To replace bulb, remove power by pulling the *FASS* switch out fully on all controlling devices. After replacing bulb(s), push the *FASS* switch(es) back in fully to restore power to the control(s).

RadioRA 2 Maestro® Local Controls

Wiring Diagrams

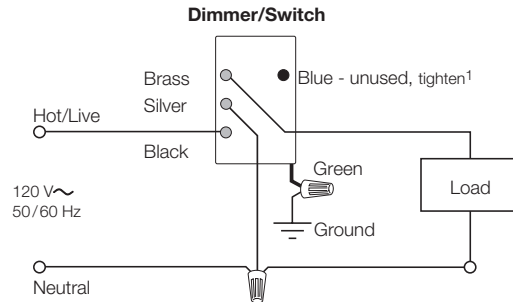
Single Location Installation

-6D, -10D



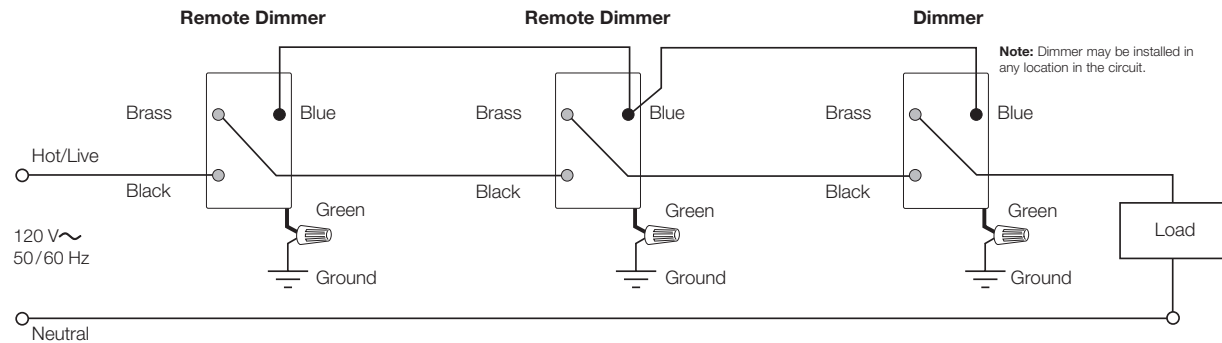
Single Location Installation with Neutral

-10ND, -8ANS



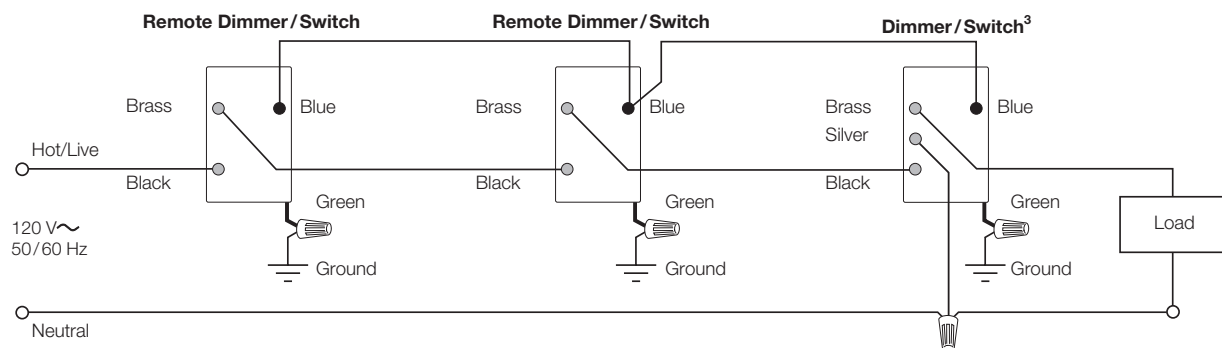
Multi-Location Installation²

-6D, -10D with RD-RD



Multi-Location Installation with Neutral^{2,3}

-10ND with RD-RD; -8ANS with RD-RS



- ¹ When using controls in single location installations, tighten the blue terminal. **Do not** connect the blue terminal to any other wiring or to ground.
- ² Up to 9 RadioRA 2 Remote Dimmers/Switches may be connected to the RadioRA 2 Dimmer/Switch. Total blue terminal wire length may be up to 250 ft (76 m).
- ³ Neutral wire Dimmers/Switches must be connected on the Load side of a multi-location installation.

RadioRA 2 Maestro® Local Controls

Colors and Finishes

Gloss Finishes



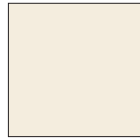
White
WH



Ivory
IV



Almond
AL



Light
Almond
LA



Gray
GR



Brown
BR



Black
BL

Satin Finishes



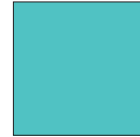
Hot
HT



Merlot
MR



Plum
PL



Turquoise
TQ



Taupe
TP



Eggshell
ES



Biscuit
BI



Snow
SW



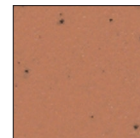
Palladium
PD



Midnight
MN



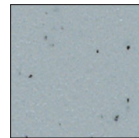
Sienna
SI



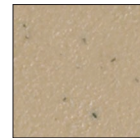
Terracotta
TC



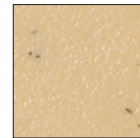
Greenbriar
GB



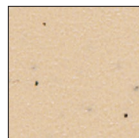
Bluestone
BG



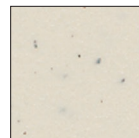
Mocha
Stone
MS



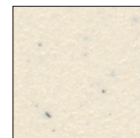
Goldstone
GS



Desert Stone
DS



Stone
ST



Limestone
LS

- Due to printing limitations, colors and finishes shown cannot be guaranteed to perfectly match actual product colors.
- Color chip keychains are available for more precise color matching:
Gloss Finishes- CG-CK-1
Satin Finishes - SC-CK-1

Metal Finish (wallplate only)



Stainless
Steel SS

When using Stainless Steel wallplates, it is recommended to order the controls in Black (BL) or Midnight (MN).