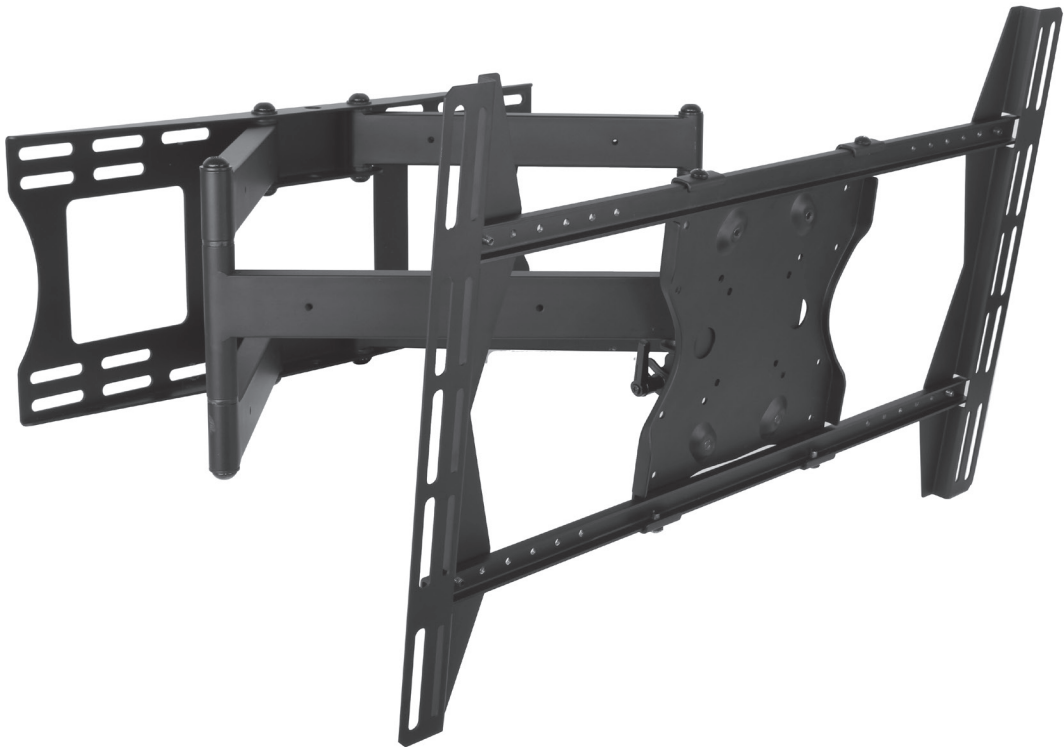




engineered by  
**Snap**  
av

**SM-CS-ART2-L**  
**SM-CS-ART2-XL**  
**Strong™ Contractor Series**  
**Universal Articulating Mount With Dual Arms**



**INSTRUCTION MANUAL**

## WARNINGS:

- Make sure these instructions are read and thoroughly understood before attempting installation. If you are unsure of any part of the installation process, contact a professional installer for assistance.
- The wall or mounting surface must be capable of supporting the combined weight of the mount and the display; otherwise the structure must be reinforced. Installer is responsible for verifying the wall/mounting surface and the anchors used can support the total load of the installation.
- Safety gear and proper tools must be used. Failure to do so can result in property damage and/or serious injury.
- A minimum of two people is required for this installation. Do not attempt to install this mount alone under any circumstance. We highly recommend this product be installed by a qualified professional person.
- Follow all instructions and recommendations regarding adequate ventilation and suitable locations for mounting your display. Consult the owner's manual for your display for more information.

## SPECIFICATIONS:

- Maximum Load: 150 lbs. (68.04 kg)
- Maximum Extension: 30-5/8"
- Wire management
- Pan/Swivel Range: 180°
- Tilt Range: -5° /+ 15°

## BOX CONTENTS:

- Wall Arm Assembly (1)
- Adapter Bracket (2)
- Adapter Panel (1)
- Hardware kit (1)
- Wire Covers (6)
- Template (1)

## TOOLS REQUIRED:

- Power Drill
- 1/4" & 5/16" Drill Bits
- Level
- 1/2" (13mm) Socket Wrench or Shifter
- Hammer
- Stud Finder
- Phillips Screw Driver



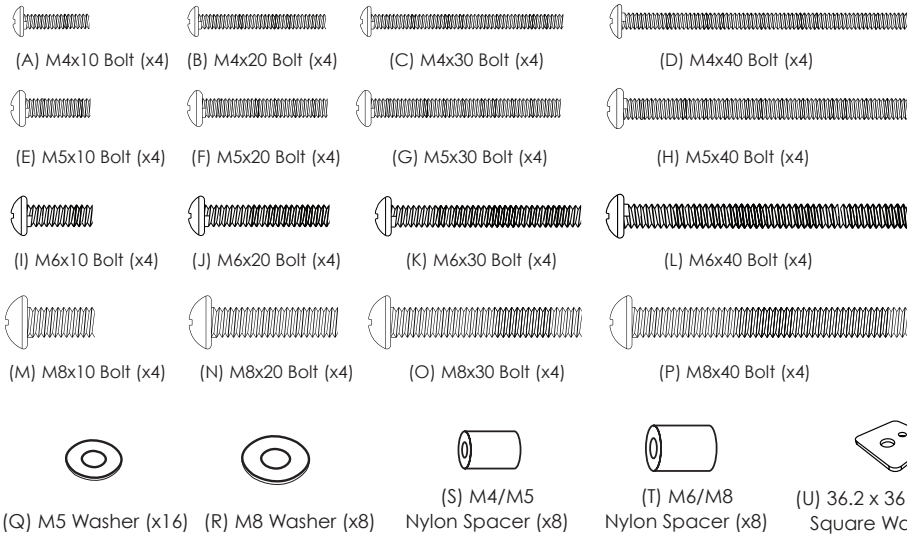
## CAUTION:

This wall mount is intended for use only with the maximum weight of 150 lbs. Use with heavier than the maximum weight indicated may result in instability causing possible injury.

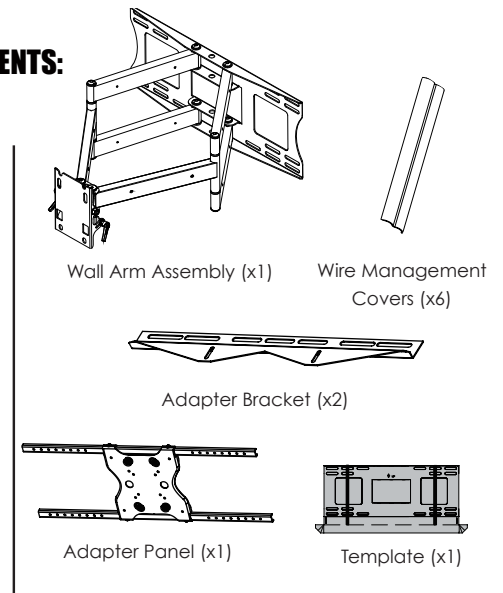


## HARDWARE:

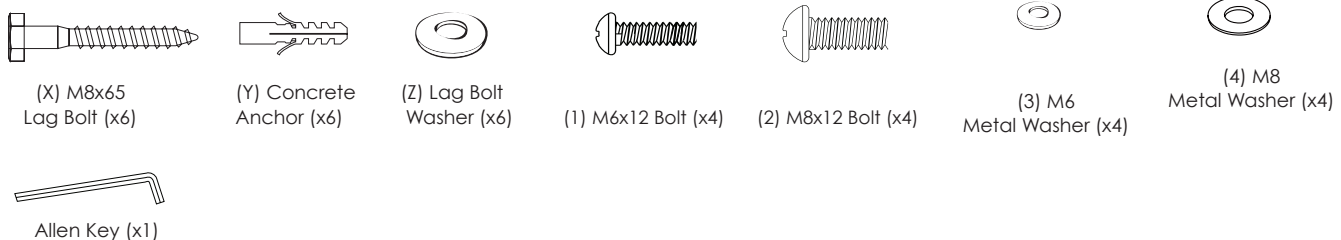
### Bag 1



## PACKAGE CONTENTS:



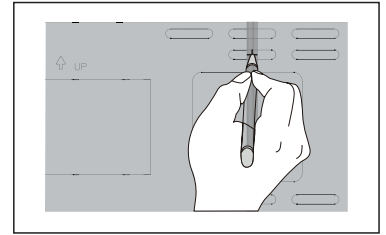
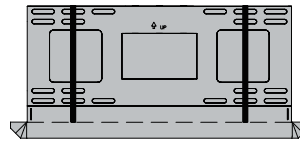
### Bag 2



# INSTALLATION

## Step 1: Use template to mark mounting hole locations for lag bolts

Note: Corners fold up to catch debris, if needed.



## Step 2: Pre-drilling

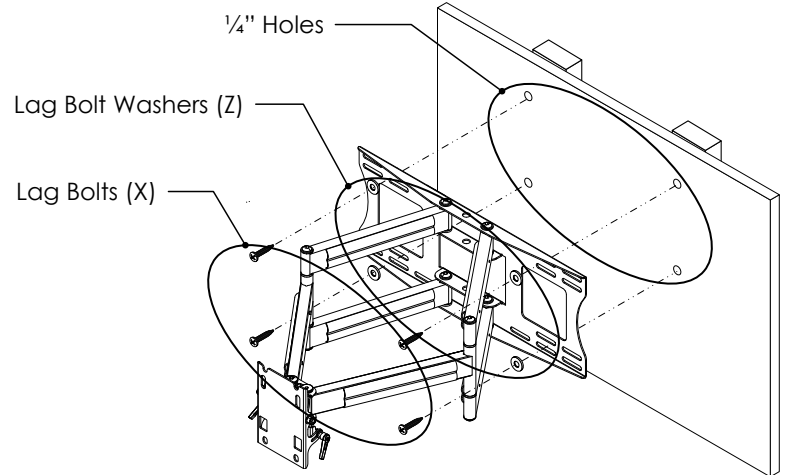
*For Mounting on a Stud Wall*

Pre-drill holes into studs using a 1/4" drill bit.

### WARNING:

Tighten screws so that wall plate is firmly attached, but do not overtighten. Overtightening can damage the screws, greatly reducing their holding strength.

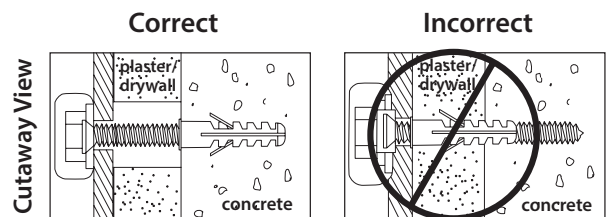
Make sure that mounting screws are anchored into the center of the studs. The use of a stud finder is highly recommended.



*For Mounting on a Concrete Wall*

Pre-drill holes into concrete using 5/16" drill bits.

Insert concrete wall anchors and tap in with hammer, if necessary.

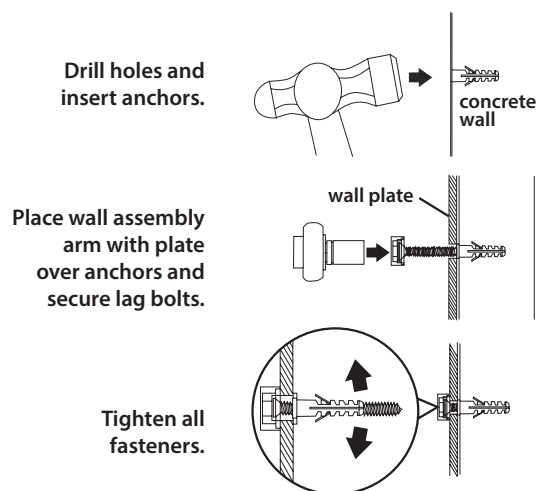


### WARNING:

When installing wall arm assembly on cinder block, verify first that you have a minimum of 1-3/8" of concrete thickness to be used for the concrete anchors. Do not drill into mortar joints! Be sure to mount in a solid part of the block, generally 1" minimum from the side of the block. Cinder block must meet ASTM C-90 specifications. It is suggested that a standard electric drill on slow setting is used to drill the hole instead of a hammer drill to avoid breaking out the back of the hole when entering a void or cavity.

**Concrete must be 2000 psi density minimum. Lighter density concrete may not hold concrete anchor.**

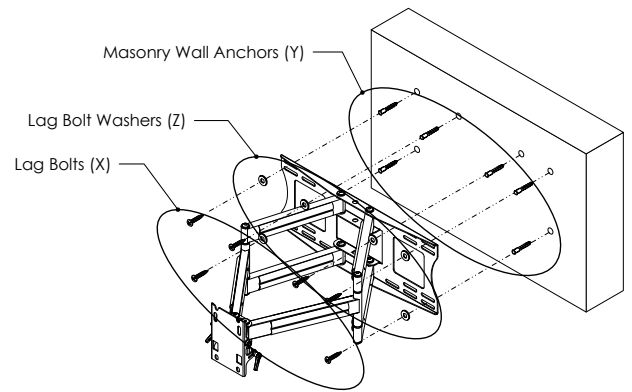
Make sure that the supporting surface will safely support the combined load of the equipment and all attached hardware and components.



### Step 3: Mount the Arm Assembly

#### For Mounting on a Stud Wall or Concrete Wall

Insert lag bolts through the wall plate into the studs or the wall anchors. When installing on concrete, 6 bolts are needed. Insert four through top set of holes; two on the far holes, and two near the center. Insert the remaining two bolts on the bottom set of holes.



### Step 4 : Mounting the Assembled Adapter Plate to Screen

#### Modify the Assembled Adapter Plate

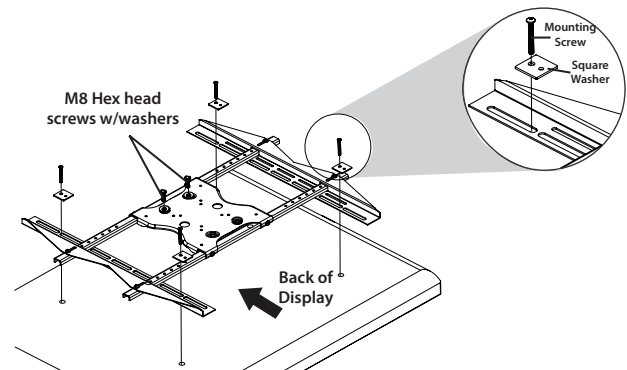
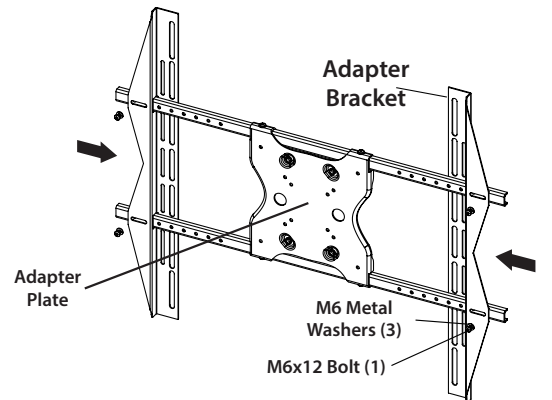
Slide the Adapter Brackets onto Assembled Adapter Plate rods. Place the assembled Adapter Plate on the back of the display with one Adapter Bracket aligned with a set of vertical mounting holes. Then, slide the other Adapter Bracket in or out until it aligns with the second set of vertical mounting holes. The Adapter Plate should be horizontally centered on the back of the flat panel display.

Use four M6x12 (1) screws and four M6 metal washers (3) and tighten Adapter Brackets to Adapter Plate rods with a Phillips Head Screw Driver.

**NOTE: There are eight positions for flexibility. Move the Adapter Brackets to desired location. Adapter Brackets can be flipped around (if required).**

Attach the Adapter Brackets using four mounting screws and four square washers (size will depend on thread pattern on flat panel being installed). Once aligned, tighten all screws down with a Phillips Head Screw Driver.

Insert two M8 Button Head Screw (2) on the top of the Adapter Plate with the Allen Wrench. **DO NOT IMMEDIATELY TIGHTEN DOWN!**

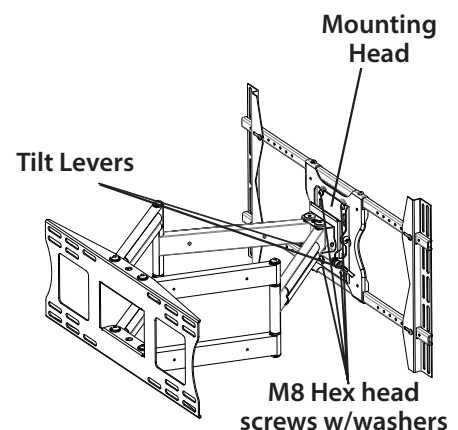


### Step 5: Attaching Screen to Wall Arm Assembly

Lift the display and hook the two M8 Button Head Screws(2) with metal washers(4) in grooves on top of the Mounting Head. Insert two more M8 Button Head Screw(2) with washers(4) in bottom two holes of the Mounting Head, securing it to the Adapter Plate. Then tighten all four screws with the Allen Wrench.

**NOTE: For demonstration purposes, the wall has been omitted from the illustrations.**

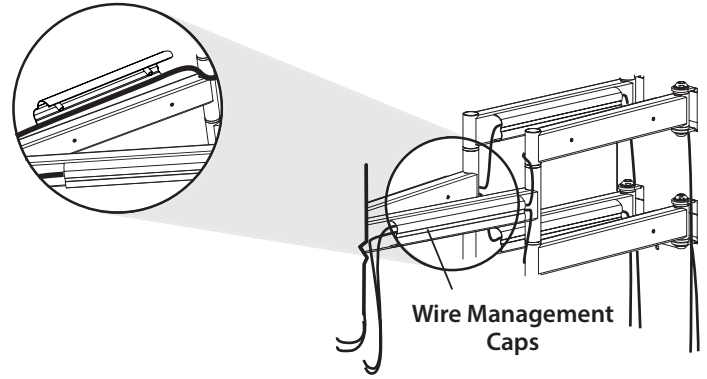
**NOTE: This procedure will require two persons. Ensure that the arm is set to its maximum negative tilt prior to attaching the display.**



## Step 6: Running Cables

Run as shown and install Wire Management Caps.

**NOTE:** Make sure cords have enough slack to allow full movement of the arm.

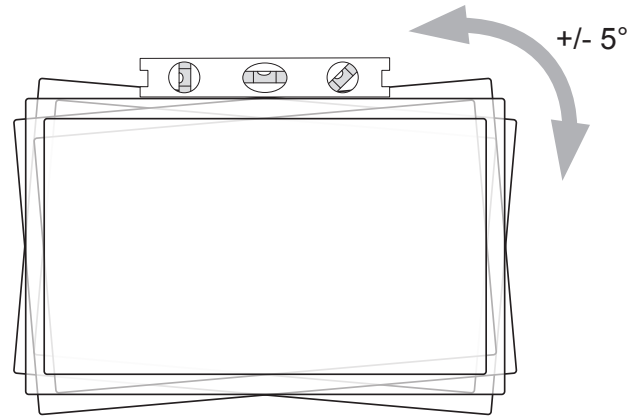


## ADJUSTMENTS:

### Adjust Horizontal Level and Tilt

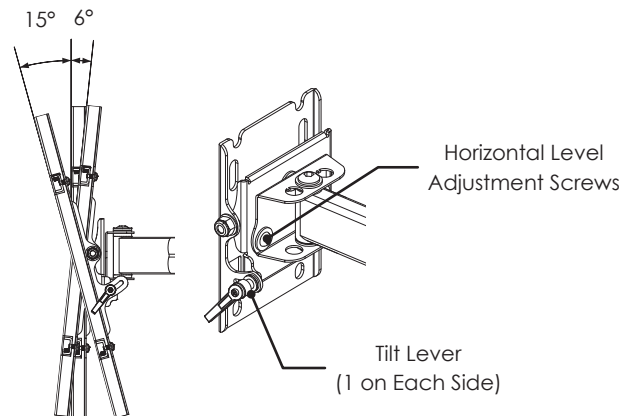
#### Step 7: Tilt Adjustment

- Loosen Tilt Levers on each side of mount head  
(Only enough to allow controlled adjustment)
- Adjust Tilt
- Lock Tilt Levers (Tighten)
- Once Tilt Levers are locked, the position of the levers can be adjusted, without loosening or tightening the unit, by pulling the levers outwards and then repositioning them to a vertical, less obtrusive position.



#### Step 8: Horizontal Adjustment

- To adjust the horizontal angle of the display, first slightly loosen the top two screws on back side of Wall Arm Assembly mounting head using Allen Key. Then firmly hold opposite corners of the display and gently turn it into the desired position. When level, re-tighten screws to lock in the position.



## LIFETIME LIMITED WARRANTY



Strong™ Mounts have a Lifetime Limited Warranty. This warranty includes parts and labor repairs on all components found to be defective in material or workmanship under normal conditions of use. This warranty shall not apply to products which have been abused, modified or disassembled. Products to be repaired under this warranty must be returned to Snap AV or a designated service center with prior notification and an assigned return authorization number (RA).

## CONTACTING TECHNICAL SUPPORT

**Phone:** (866) 838-5052

**Email:** [Techsupport@snapav.com](mailto:Techsupport@snapav.com)





engineered by  
**Snap**  
av