

UNIVERSAL SWIVEL MOUNT FOR SMALL DISPLAYS SM-SWIVEL-S



STRONG
engineered by
Snap

INSTRUCTION MANUAL

SPECIFICATIONS

- Display Size: 13" to 27"
- Maximum Load: 33 lbs (15.0 kg)
- Mounting Pattern: VESA 75x75, 100x100, 200x100
- Tilt Range: +/- 13.8°
- Pan/Swivel Range: 180°
- Horizontal Rotation: 360°
- Extension/Profile: 3.7" to 9.4" (9.5 cm to 24.0 cm)

BOX CONTENTS

- Swivel Wall Mount (x1)
- Wall Plate (x1)
- Instruction Manual (x1)
- Hardware Kit (x1)



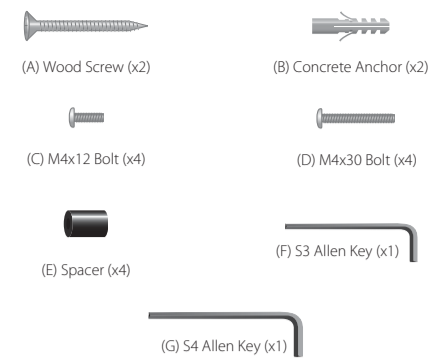
CAUTION: This wall mount is intended for use only with the maximum weight of 33 lbs

For Technical support call 866.838.5052

WARNINGS

- Make sure these instructions are read and thoroughly understood before attempting installation. If you are unsure of any part of the installation process, contact a professional installer for assistance.
- The wall or mounting surface must be capable of supporting the combined weight of the mount and the display; otherwise the structure must be reinforced.
- Safety gear and proper tools must be used. Failure to do so can result in property damage and/or serious injury.
- Follow all instructions and recommendations regarding adequate ventilation and suitable locations for mounting your display. Consult the owner's manual for your display for more information

HARDWARE KIT



TOOLS REQUIRED

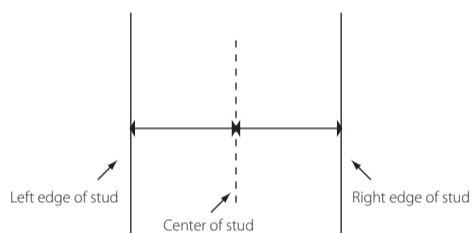
- Phillips Head Screw Driver
- Electric or Portable Drill
- 3/16" (5 mm) Drill Bit and Stud Finder for Drywall Installation
- 5/16" (8 mm) Masonry Bit for Concrete Installation

INSTALLATION

Part 1A – Installing the Wall Plate (Drywall)

IMPORTANT! For safety reasons, this mount must be secured to a wood stud. The stud must be capable of supporting the combined weight of the mount and the display.

- Use a high quality stud finder to locate a single stud where you want to install your mount.
- Mark both edges of the stud to help identify the exact center (see illustration).



Part 1A – Installing the Wall Plate (Drywall) (continued)

- Place the wall plate over the center of the marked stud and level it using the integrated bubble level.
- Mark the two holes for securing the mount and set the wall plate aside.
- Drill a pilot hole at each marked location using an electric or portable drill and 3/16" (5 mm) bit.
- Move the wall plate back into position and secure it using the Wood Screws (A) from the hardware kit. **Do not over-tighten these screws.**



Part 1B – Installing the Wall Plate (Concrete)

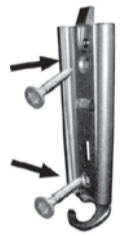
IMPORTANT! For safety reasons, the concrete wall must be capable of supporting the combined weight of the mount and the display.

- Place the wall plate against the wall in the desired location and level it using the integrated bubble level.
- Mark the two holes for securing the mount and set the wall plate aside.
- Drill a 5/16" (8 mm) hole at both marked locations. Remove any excess dust from the holes.
- Insert a Concrete Anchor (P) into each hole so that it is flush with the concrete surface. A hammer can be used to lightly tap the anchors into place if necessary.

NOTE: If the concrete wall is covered by a layer of plaster or drywall, the concrete anchor must pass completely through the layer to rest flush with the concrete surface.

Part 1B – Installing the Wall Plate (Concrete) (continued)

- Move the wall plate back into position and secure it using the Wood Screws (A) from the hardware kit. Do not over-tighten these bolts.



Part 2 – Attaching the Mount to the Display

IMPORTANT! Use extra care during this part of the installation. If possible, avoid placing your display facedown as it may damage the viewing surface.

NOTE: Your mount comes with two different bolt lengths to accommodate a wide variety of display models. Not all of the hardware in the kit will be used.

Part 2 – Attaching the Mount to the Display (continued)

- Determine the correct bolt to use by examining the back of your display:
 - A** If the back of your display is flat and the mounting holes are flush with the surface, you will use one of the M4x12 Bolts (C) from the hardware kit.
 - B** If the back of your display is curved, has a protrusion, or if the mounting holes are recessed, you may need to use one of the M4x30 Bolts (D) and the Spacers (E).
- Attach the mount to the back of your display using the hardware identified in Step 1. Make sure all screws are secure, but do not over-tighten.

NOTE: If the holes of the mount do not line up with the holes on your display, check to make sure that your display is VESA compatible. This mount can only be used with displays that are VESA 75,100, or 200 compatible.

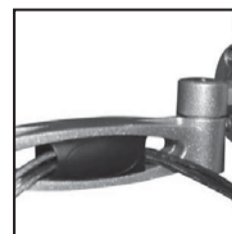
Part 3 – Final Assembly

- To complete the installation, simply slide the mount with your display attached into the wall plate. The plastic tab at the top of the wall plate will click to indicate that the mount is secure.
- To remove the mount from the wall, push in on the plastic tab and carefully slide the mount upwards and out of the wall plate.
- For extra security and stability, tighten the set screw located on the wall plate (see illustration) using the S3 Allen Key (F) provided with the hardware kit. **Remember to loosen the set screw before attempting to remove the mount from the wall.**



Part 3 – Final Assembly (continued)

- To use the integrated cable management feature, first remove the plastic covers located on the arm of the mount (see illustration). Route your cables through the arm and re-attach the plastic covers to hold them in place. Make sure to leave enough slack in the cables so that they are not pulled or pinched when you move the mount. You may also route the cables through the hook located at the bottom of the wall plate.

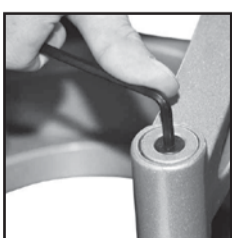


OPERATION AND ADJUSTMENT

- To adjust the tilt angle or rotate your screen, firmly grasp the sides of your display and carefully move it into position. If you find the mount is too difficult to move or is too loose to hold your mount in position, adjust the three screws located directly behind the head of the mount using the S4 Allen Key (G) from the hardware kit (see illustration). Make sure you adjust all three screws evenly.



- Swivel adjustments can be made simply by moving your display into the desired position. If either of the swivel joints are too tight or become too loose to hold the mount in place, they can be adjusted using the S4 Allen Key (G) provided in your hardware kit (see illustration).



Strong™ Mounts have a Lifetime Limited Warranty. This warranty includes parts and labor repairs on all components found to be defective in material or workmanship under normal conditions of use. This warranty shall not apply to products which have been abused, modified or disassembled. Products to be repaired under this warranty must be returned to Snap AV or a designated service center with prior notification and an assigned return authorization number (RA).