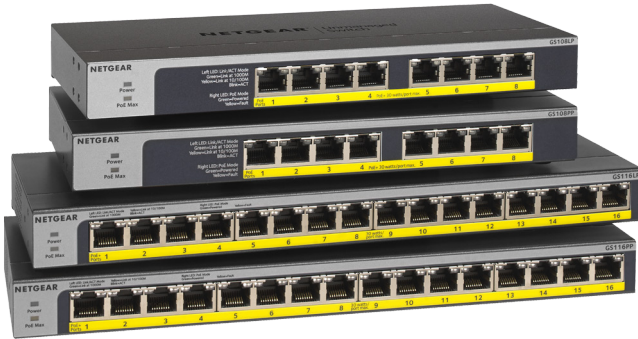


## 5-port, 8-port and 16-port Gigabit Ethernet Unmanaged PoE/PoE+ Switches



### Scalable PoE+ Technology with Flexible Placement

The NETGEAR® Gigabit Unmanaged Switch series helps businesses cost-effectively increase power budget to expand their network.

Featuring the industry's first flexible PoE+ integrated technology, you can easily scale your power capabilities by simply upgrading the power supply—effectively future proofing both your small business network and budget.

All PoE ports fully support PoE/PoE+ and feature Dynamic PoE capability that intelligently optimizes power distribution by detecting each device's actual

requirements and allocating resources as necessary over time, rather than solely based on PoE class reported. Unlike standard PoE that reserves maximum power based only on PoE class reported per port regardless of usage, Dynamic PoE efficiently reallocates unneeded power back to the switch to power up more devices with the same PoE budget. This makes these switches ideal for deploying a wide range of devices like Wireless Access Points, Pan/Tilt/Zoom and fixed IP cameras, VoIP phones, security door locks, and virtually any IoT PoE-powered device, while

redistributing power where it's needed and maximizing your network's capacity without wasting energy.

Available with 5, 8, or 16 Gigabit copper ports in a durable metal desktop case, these compact Ethernet switches offer exceptional placement flexibility. They can be mounted in small cabinets, standard 19" racks, directly on walls, or conveniently on your desk using the included mounting accessories.

## Highlights

### All PoE Ports Support PoE+

Every port delivers up to 30W of PoE+ power, enabling deployment of your most power-intensive devices like PTZ cameras, PoE lighting systems, PD switches, access points, and any other high-demand PoE equipment.

### Flexible PoE Budget

NETGEAR's exclusive FlexPoE technology allows you to easily scale your power capabilities by simply upgrading the power supply as your network requirements change:

- GS108LP/GS108PP: Can be upgraded from 60W to 83W or 123W total PoE budget
- GS116LP/GS116PP: Can be upgraded from 76W to 115W or 183W total PoE budget

### Dynamic PoE Allocation

Intelligent power management detects actual device requirements and redistributes unused power across your network, allowing you to connect more devices with the same power budget while maximizing efficiency.

### Versatile Mounting Options

Adapts to your needs and configuration in any environment, desktop, wall-mount, or rack-mount with included mounting kits.

### Compact, Fanless Design

Small form-factor, fanless design for silent operation. Perfect for noise-sensitive environments.

# 5-port, 8-port and 16-port Gigabit Ethernet Unmanaged PoE/PoE+ Switches

## Hardware at a Glance

Model Name	Form-Factor	10/100/1000 Base-T RJ45 ports	PoE/PoE+ 802.3af/ 802.3at Ports	PoE Budget/PSU	LEDs	FlexPoE Options/ PSU Supported	Fans
GS105P	Desktop & wall mount	5	4	PoE Budget: 63W PSU: 67.5W	Power, PortLink/ Speed/Activity	NA	Fanless
GS105PP	Desktop & wall mount	5	4	PoE Budget: 83W PSU: 90W	Power, PortLink/ Speed/Activity	NA	Fanless
GS108LP	Desktop, wall & rack mount	8	8	PoE Budget: 60W PSU: 67.5W	Power, PortLink/ Speed/Activity	PSU: 67.5W/90W/130W PoE: 60W/83W/123W	Fanless
GS108PP	Desktop, wall & rack mount	8	8	PoE Budget: 123W PSU: 130W	Power, PortLink/ Speed/Activity	PSU: 67.5W/90W/130W PoE: 60W/83W/123W	Fanless
GS116LP	Desktop, wall & rack mount	16	16	PoE Budget: 76W PSU: 90W	Power, PortLink/ Speed/Activity	PSU: 90W/130W/200W PoE: 76W/115W/183W	Fanless
GS116PP	Desktop, wall & rack mount	16	16	PoE Budget: 183W PSU: 200W	Power, PortLink/ Speed/Activity	PSU: 90W/130W/200W PoE: 76W/115W/183W	Fanless



### GS105P/GS105PP

- 5 x Gig Copper Ports
- 4 x 802.3af/802.3at Ports
- Desktop, Wall-mount
- Small Form Factor



### GS105P/GS105PP rear



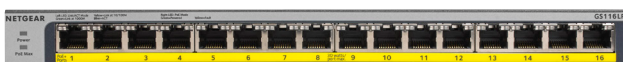
### GS108LP/GS108PP

- 8 x Gig Copper Ports
- 8 x 802.3af/802.3at Ports
- Desktop, Wall-mount and 19-inch Rackmountable
- Small Form Factor



### GS108LP/GS108PP rear

- Interchangeable External Power Supply



### GS116LP/GS116PP

- 16 x Gig Copper Ports
- 16 x 802.3af/802.3at Ports
- Desktop, Wall-mount and 19-inch Rackmountable
- Small Form Factor



### GS116LP/GS116PP rear

- Interchangeable External Power Supply

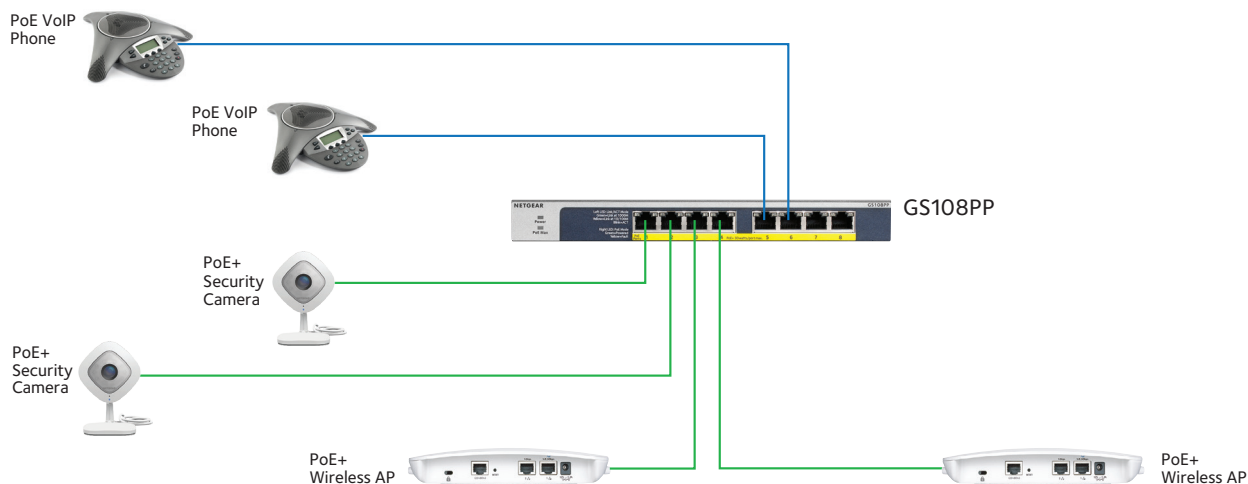
### Accessory Power Adapters

Increase or decrease your PoE budget anytime by simply upgrading your switch Power Supply, without having to purchase a new switch. Future-proof your PoE budget with GS108LP or GS116LP. And if you have power-hungry devices and directly need a high power PoE switch, buy GS108PP or GS116PP. This unique combination from NETGEAR Business makes these switches the most adaptive in the market. The following table describes the Accessory Power Adapters which are sold separately:

Switch Model	Power Adapter Model	Power Adapter Wattage	PoE+ Power Wattage
GS108LP (Comes w/ 67.5W PA)	EPS90W EPS130W	90W 130W	83W 123W
GS108PP (Comes w/ 130W PA)	EPS90W EPS130W	90W 130W	83W 123W
GS116LP (Comes w/ 90W PA)	EPS90W EPS130W EPS200W	90W 130W 200W	76W 115W 183W
GS116PP (Comes w/ 200W PA)	EPS90W EPS130W EPS200W	90W 130W 200W	76W 115W 183W

### Example Application

#### GS108LP/GS108PP in a Business Environment



### Why the NETGEAR PoE/PoE+ Switches are ideal for small business environments

- Upgradable PoE budget with interchangeable power supplies
- Small form factor and silent for quiet operation
- Plug-and-play, automatic connectivity to your router or modem
- Prioritize voice and video traffic
- Limited Lifetime Warranty\*, online support and Next Business Day (NBD) replacement

## 5-port, 8-port and 16-port Gigabit Ethernet Unmanaged PoE/PoE+ Switches

Technical Specifications	GS105P	GS105PP	GS108LP	GS108PP	GS116LP	GS116PP
Gigabit Ethernet RJ-45 Copper ports (10M/100M/1G) - 1000BASE-T	5	5	8	8	16	16
PoE/PoE+ ports	4 PoE+ (63W PoE budget)	4 PoE+ (83W PoE budget)	8 PoE+ (60W PoE budget)	8 PoE+ (123W PoE budget)	16 PoE+ (76W PoE budget)	16 PoE+ (183W PoE budget)
Enclosure	Metal	Metal	Metal	Metal	Metal	Metal
Connector Type	Metal	Metal	Metal	Metal	Metal	Metal
Form Factor	Desktop Wall-Mount	Desktop Wall-Mount	Desktop Rackmount Wall-Mount	Desktop Rackmount Wall-Mount	Desktop Rackmount Wall-Mount	Desktop Rackmount Wall-Mount
Acoustic noise (ANSI-S10.12)	0 (fanless)	0 (fanless)	0 (fanless)	0 (fanless)	0 (fanless)	0 (fanless)
Mean Time Between Failures (MTBF)	4,113,947 hours		2,752,476 hours		2,362,192 hours	
PoE Configuration						
802.3af	Ports 1-4	Ports 1-4	Ports 1-8	Ports 1-8	Ports 1-16	Ports 1-16
802.3at	Ports 1-4	Ports 1-4	Ports 1-8	Ports 1-8	Ports 1-16	Ports 1-16
PoE Max Power Per Port	Up to 15.4W for 802.3af and 30W for 802.3at					
Total PoE Power Budget	63W	83W	60W	123W	76W	183W
Gigabit Ports	5	5	8	8	16	16
Power Consumption						
Power Supply	External Input 54V/1.25A	External Input 54V/1.66A	External Input 54V/1.25A	External Input 54V/2.4A	External Input 54V/1.66A	External Input 54V/3.7A
Power Supply Supported	External Input 54V/1.25A (67.5W)	External Input 54V/1.66A (90W)	External Input 54V 2.4A (130W) Input 54V 1.66A (90W) Input 54V 1.25A (67.5W)		External Input 54V 3.7A (200W) Input 54V 2.4A (130W) Input 54V 1.66A (90W)	
Max power (worst case, all ports used, line-rate traffic) (Watts)	67.5W	90W	67.5W	130W	90W	200W
Min power (link-down standby) (Watts)	0.95W	0.90W	1.23W	1.23W	2.68W	2.68W
Heat Dissipation (max and min) (BTU/hr)	228.38 BTU/ 3.24 BTU	293.33BTU/ 3.078 BTU	230.85 BTU/ 3.69 BTU	444.6 BTU/ 3.69 BTU	270.18 BTU/ 9.18 BTU	680.58 BTU/ 9.14 BTU
Energy Efficient Ethernet (EEE) IEEE 802.3az	Yes	Yes	Yes	Yes	Yes	Yes
Auto power-down	Yes	Yes	Yes	Yes	Yes	Yes
Product Specifications						
Jumbo frame support	Yes	Yes	Yes	Yes	Yes	Yes
Max MAC entries	2K	2K	4K	4K	4K	4K
Buffer Size	128K	128K	192KB	192KB	1MB	1MB
Forwarding modes	Store-and-forward	Store-and-forward	Store-and-forward	Store-and-forward	Store-and-forward	Store-and-forward
Bandwidth	10Gbps	10Gbps	16Gbps	16Gbps	32Gbps	32Gbps

## 5-port, 8-port and 16-port Gigabit Ethernet Unmanaged PoE/PoE+ Switches

Physical Specifications	GS105P	GS105PP	GS108LP	GS108PP	GS116LP	GS116PP
Dimensions (W x D x H)	158 x 101 x 27 mm (6.22 x 4.00 x 1.06 in)		236 x 102 x 27 mm (9.29 x 4.02 x 1.06 in)		286 x 102 x 27 mm (11.26 x 4.02 x 1.06 in)	
Weight	0.40kg (0.88 lb)		0.6 kg (1.32 lb)		0.88 kg (1.94 lb)	
Quality of Service (QoS)						
DSCP	Yes	Yes	Yes	Yes	Yes	Yes
IEEE 802.1p COS	Yes	Yes	Yes	Yes	Yes	Yes
Queue WRR Ratio	1:2:4:8 Weighted Fair Queue (WFQ)			1:3:5:7:8:10:12:15 Weighted Fair Queue (WFQ)		
LEDs						
Per port	Speed, Link, Activity, PoE					
Per device	Power Status, PoE Max					
IEEE Network Protocols						
<ul style="list-style-type: none"><li>• IEEE 802.3 Ethernet</li><li>• IEEE 802.3u 100BASE-TX</li><li>• IEEE 802.3ab 1000BASE-T</li><li>• IEEE 802.1p Class of Service</li><li>• IEEE 802.3az Energy Efficient Ethernet (EEE)<ul style="list-style-type: none"><li>• IEEE 802.3i 10BASE-T Ethernet</li><li>• IEEE 802.3x Flow Control</li></ul></li></ul>						
Environmental Specifications						
Operating						
Operating Temperature	0° to 40°C (32° to 104°F)					
Humidity	90% maximum relative humidity (RH), non-condensing					
Altitude	10,000 ft (3,000 m) maximum					
Storage						
Storage Temperature	-20° to 70°C (- 4° to 158°F)					
Humidity (relative)	95% maximum relative humidity (RH), non-condensing					
Altitude	10,000 ft (3,000 m) maximum					
Electromagnetic Emissions and Immunity Certifications						
Certifications	Residential Class B for FCC part 15, CAN ICES, CE	Residential Class B for FCC part 15, CAN ICES, CE	Commercial Class A for FCC part 15, CAN ICES, CE, RCM, KC, VCCI	Commercial Class A for FCC part 15, CAN ICES, CE, RCM, BSMI, KC, VCCI	Commercial Class A for FCC part 15, CAN ICES, CE, RCM, BSMI, KC, VCCI	Commercial Class A for FCC part 15, CAN ICES, CE, RCM, BSMI, KC, VCCI
Safety Certifications						
Certifications	CB, CE LVD, CSA	CB, CE LVD, CSA	CB, CE LVD, CSA, RCM	CB, CE LVD, CSA, RCM, BSMI	CB, CE LVD, CSA, RCM, BSMI	CB, CE LVD, CSA, RCM, BSMI

## 5-port, 8-port and 16-port Gigabit Ethernet Unmanaged PoE/PoE+ Switches

Warranty and Support	GS105P	GS105PP	GS108LP	GS108PP	GS116LP	GS116PP
Limited Lifetime* Warranty						
Limited Lifetime Online Technical Support*						
Limited Lifetime Next-Business-Day (NBD) Replacement						
ProSUPPORT OnCall 24x7 Service Packs**				Category S2		
				PMB0S12 (1 yr)		
				PMB0S32 (3 yrs)		
				PMB0S52 (5 yrs)		
Package Contents						
All models				NETGEAR Gigabit Ethernet PoE/PoE+ Unmanaged Switch		
				Power adapter (localized to the country of sale)		
				Wall installation kit & rack-mount kit (varies by model)		
				Quick install guide		
Ordering Information						
GS105P-300NAS		North America and Latin America				
GS105P-300EUS		Europe and United Kingdom				
GS105PP-300NAS		North America and Latin America				
GS105PP-300EUS		Europe and United Kingdom				
GS108LP-100NAS		North America and Latin America				
GS108LP-100EUS		Europe and United Kingdom				
GS108LP-100AJS		Asia Pacific and Australia				
GS108PP-100NAS		North America and Latin America				
GS108PP-100EUS		Europe and United Kingdom				
GS108PP-100AJS		Asia Pacific and Australia				
GS116LP-100NAS		North America and Latin America				
GS116LP-100EUS		Europe and United Kingdom				
GS116LP-100AJS		Asia Pacific and Australia				
GS116PP-100NAS		North America and Latin America				
GS116PP-100EUS		Europe and United Kingdom				
GS116PP-100AJS		Asia Pacific and Australia				
Optional Modules and Accessories						
EPS90W		90W External Power Adapter				
EPS130W		130W External Power Adapter				
EPS200W		200W External Power Adapter				

\*This product comes with a limited warranty that is valid only if purchased from a NETGEAR authorized reseller, and covers unmodified hardware, fans and internal power supplies - not software or external power supplies, and requires product registration at <https://www.netgear.com/business/registration> within 90 days of purchase; see <https://www.netgear.com/about/warranty> for details. Intended for indoor use only.

\*\* The NETGEAR OnCall 24x7 contract provides unlimited phone and email technical support for your networking product. For products purchased prior to 06/2014, also includes next business-day hardware replacement.

NETGEAR, the NETGEAR Logo and ProSAFE are trademarks of NETGEAR, Inc. in the United States and/or other countries. Other brand names mentioned herein are for identification purposes only and may be trademarks of their respective holder(s).