



# WIRELESS ACCESS POINT

## Quick Start Guide

AN-100-AP-I-N  
AN-300-AP-I-N





## FCC Warning

Changes or modifications not expressly approved by the party responsible for compliance could void the user's authority to operate the equipment. This device complies with Part 15 of the FCC Rules. Operation is subject to the following two conditions:

- ① This device may not cause harmful interference, and
- ② This device must accept any interference received, including interference that may cause undesired operation.

**NOTE:** This equipment has been tested and found to comply with the limits for a Class A digital device, pursuant to part 15 of the FCC Rules. These limits are designed to provide reasonable protection against harmful interference when the equipment is operated in a commercial environment. This equipment generates, uses, and can radiate radio frequency energy and, if not installed and used in accordance with the instruction manual, may cause harmful interference to radio communications. Operations of this equipment in a residential area is likely to cause harmful interference in which case the user will be required to correct the interference at his own expense.

## CE Warning

This is a Class A product. In a domestic environment, this product may cause radio interference, in which case the user may be required to take adequate measures.



# Welcome to Araknis Networks™

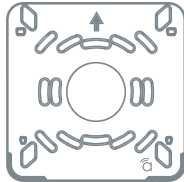
Thank you for choosing an Araknis™ Wireless Access Point (WAP). With sleek, unobtrusive housings, extensive features, unique easy setup, and convenient PoE power, these products are ideal for use in both residential and commercial applications.



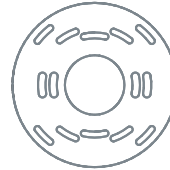
## Step 1: Unbox



AN-100/300-AP-I-N (WAP)



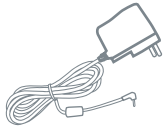
Mounting Bracket



Tile Ceiling Backing Plate



Quick Start Guide



DC Power Supply



LAN Cable



Tile Ceiling Mounting  
Hardware

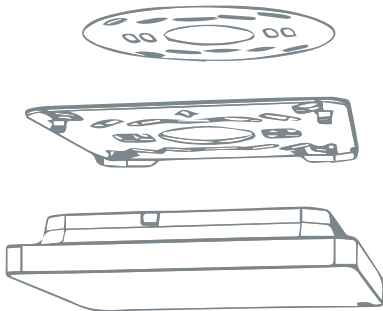


Drywall Mounting  
Hardware

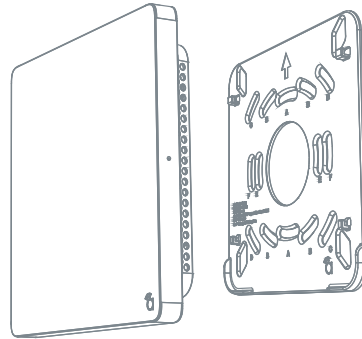


## Step 2: Install

### Ⓐ Ceiling Mount



### Ⓑ Wall Mount



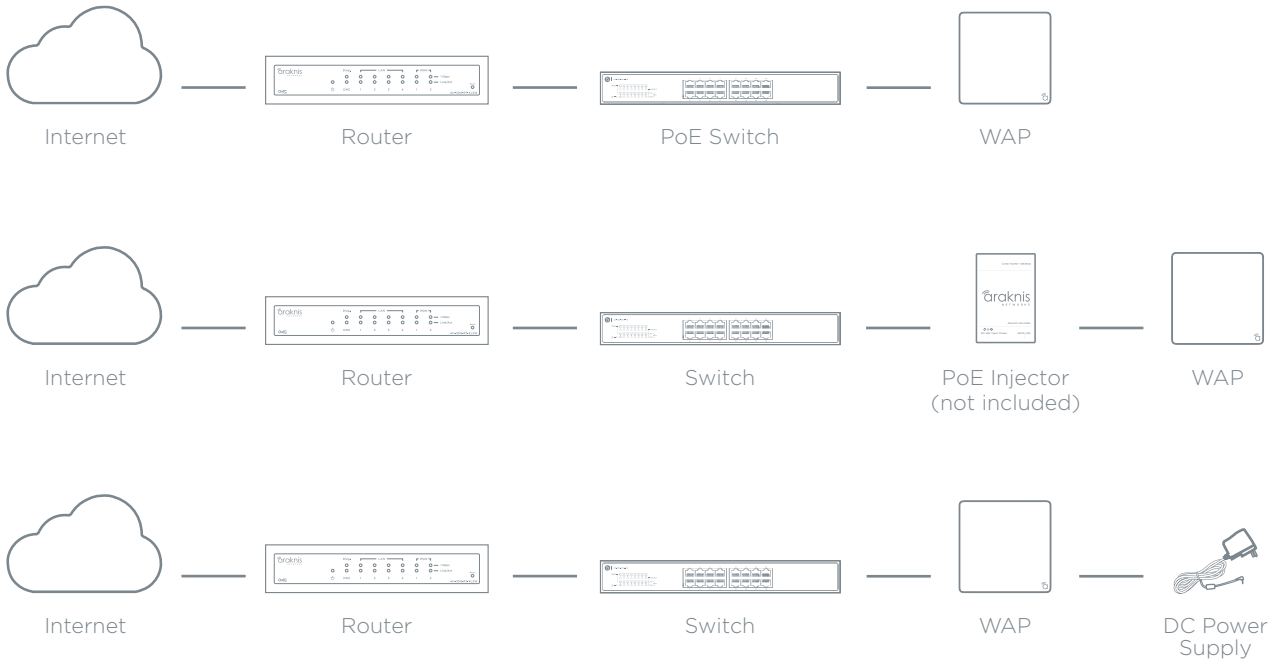
### Ⓒ Shelf Mount



**NOTE:** Use the ceiling backing plate on top of acoustic ceiling tiles to prevent the mounting nuts from pulling through.

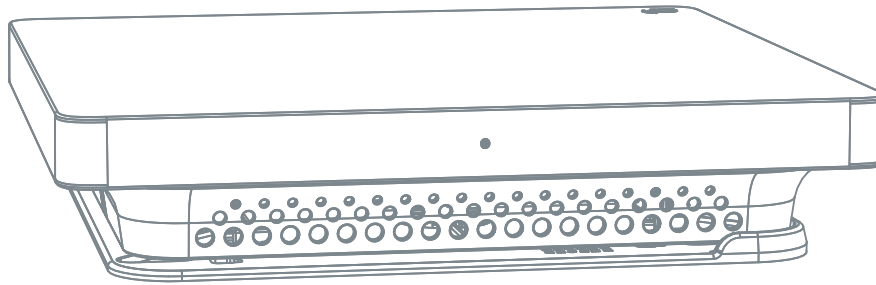


## Step 3: Connect





## Step 4: Verify



### LED Status:

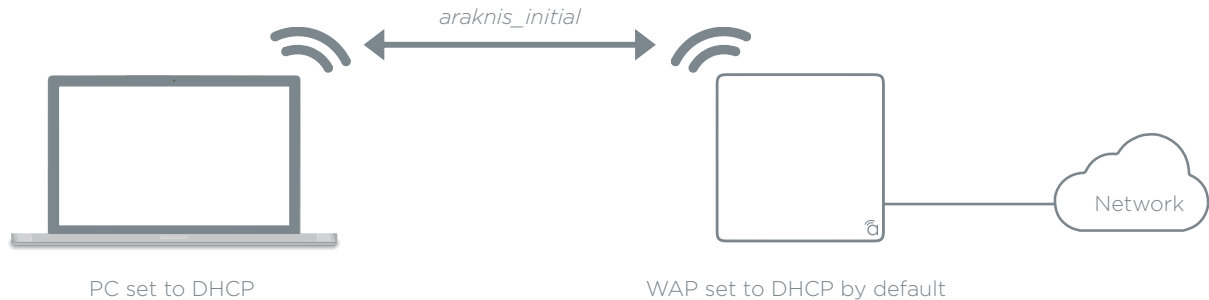
- Blinking: WAP is not working correctly. Refer to the full manual or contact Araknis technical support.
- Solid: WAP is operating correctly.



## Step 5: Connect to Wireless (EZ Setup)

On your wireless network-enabled computer:

- (A) Make sure the wireless network card is set to obtain an IP address automatically (DHCP mode).
- (B) Connect your computer to the wireless network named "araknis\_initial".



**NOTE:** Disconnect all network cables from your computer before using wireless to connect to the WAP.





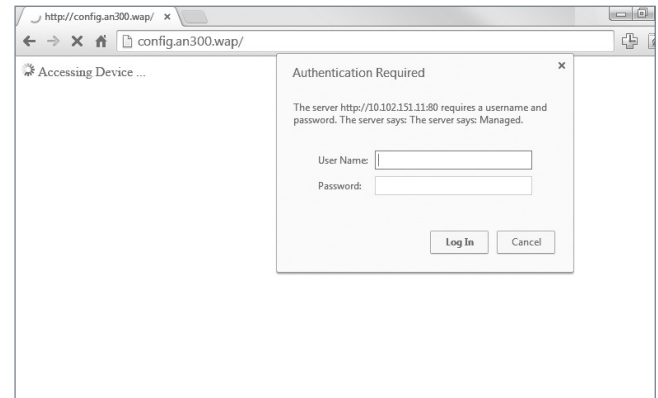
## Step 6: Log Into Web Interface

- A Open a web browser and navigate to the WAP interface using the correct "config" address:

AN-100-AP-I-N	http://config.an100.wap/
AN-300-AP-I-N	http://config.an300.wap/

- B Log in using the default credentials:

Username	araknis
Password	araknis



**NOTE:** If you can't connect to the WAP using this method, or need to configure the device before connecting it to the network, try these options for accessing your device:

- DHCP IP address – Page 11
- Default IP Address – Page 12
- OvrC – Page 15



## Pro Tip: Save and Apply Changes

After making changes to settings on a menu page, left-click the “Save” button on the menu to hold the new settings in the Apply Changes field.

IP Settings	
IP Address	192.168.1.101
Subnet Mask	255.255.255.0
Default Gateway	192.168.1.1
Primary DNS	192.168.1.1
Secondary DNS	192.168.1.1
DHCP	<input type="checkbox"/> Enable

Interface Settings	
Speed	Auto
Duplex	Full

Save Cancel

After all desired changes have been made, left-click “Apply Changes” to review the new settings. Left-click “Apply” to make the changes or “Revert” to cancel the changes.

Unsaved

Unsaved (changed)

```
Apply: 192.168.1.101 -> 192.168.1.1  
Interface: 100 -> 1000  
Interface: 100 -> Full  
Interface: 100 -> Auto  
Interface: 100 -> 192.168.1.1
```

Apply Revert

**NOTE:** Settings will take effect after the progress bar completes 100%.

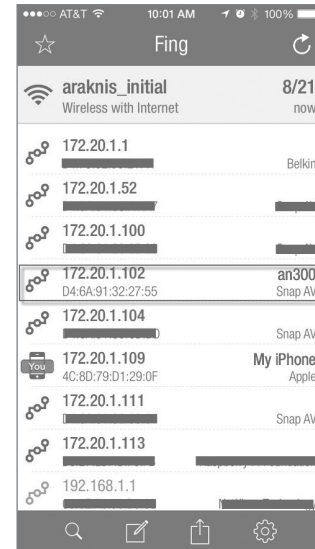


## Other Access Methods: DHCP IP Address

The WAP is configured to DHCP by default so that the DHCP server can assign an IP address when the WAP is connected to the network (the DHCP server is usually the router). This address can be used for accessing the web interface.

Use one of these methods to find the IP address of the WAP:

- Check the client table on your router
- Use a network scanner (e.g. Fing) to sniff the network. The Araknis WAP manufacturer field will display “Snap AV”
- See the highlighted field in the “Fing” screenshot to the right for an example of an Araknis device being identified.





## Other Access Methods: Default IP Address

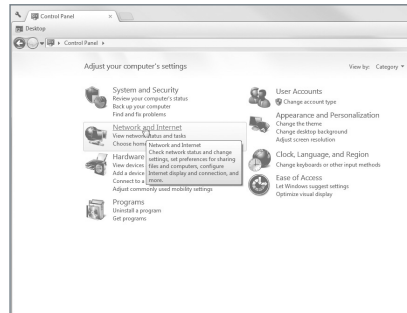
If the WAP is not issued an IP address on the network, or needs to be accessed while not connected to a network, you can configure your computer's network connection to allow access using the default IP address, **"192.168.20.253"**.

*Windows 7 screenshots shown for reference.*

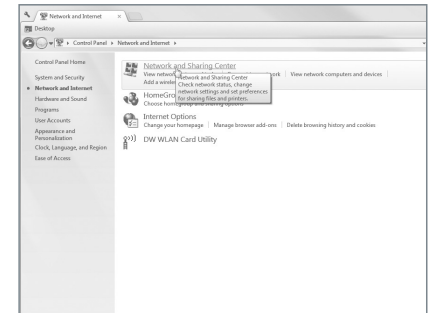
**(A)** Connect your PC to the WAP using a network patch cable.



**(B)** On your PC, open the Control Panel and left-click "Network and Internet".



**(C)** Left-click "Network and Sharing Center".

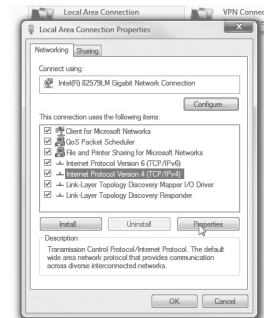
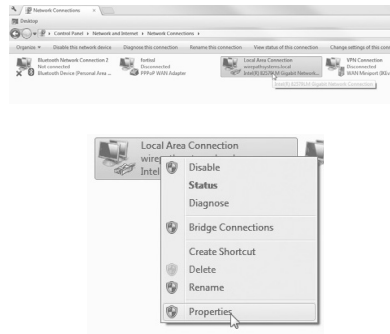
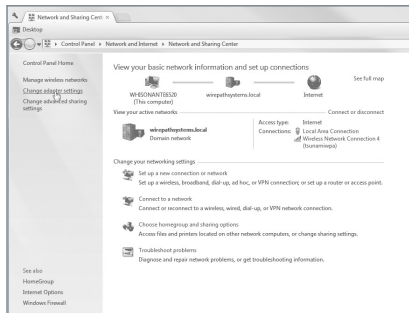




# Other Access Methods: Default IP Address

Windows 7 screenshots shown for reference.

- (D) In the left bar, left-click “Change adapter settings”.
- (E) Right-click the icon for the wired network connection and left-click “Properties”.
- (F) Left-click to highlight “Internet Protocol Version 4 (TCP/IPv4)”, then left-click “Properties”.





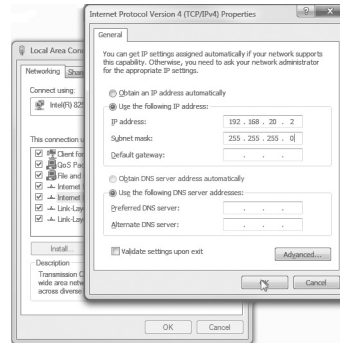
# Other Access Methods: Default IP Address

Windows 7 screenshots shown for reference.

- G In the “General” tab, left-click “Use the following IP address:” and enter the IP address and subnet mask.

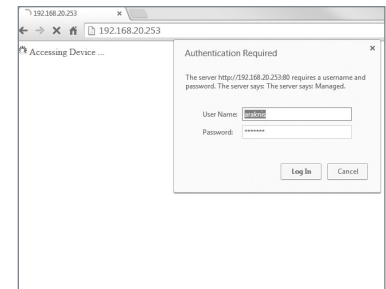
IP Address	192.168.20.2
Subnet Mask	255.255.255.0

- H Left-click “OK” to close Internet Protocol Version 4 (TCP/IPv4) Properties, then left-click “OK” to close wireless network connection properties.



- I Open a web browser and navigate to “<http://192.168.20.253/>”. Log in using the default credentials:

Username	araknis
Password	araknis

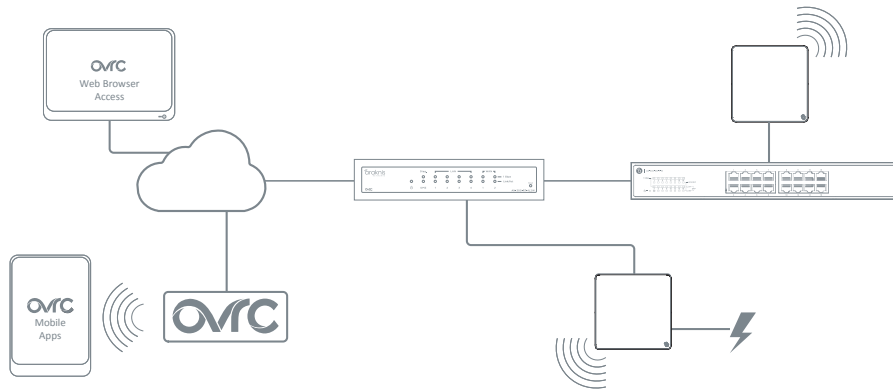




## Other Access Methods: OvrC

OvrC gives you remote device management, real-time notifications, and intuitive customer management, right from your computer or mobile device. Setup is plug-and-play, with no port forwarding or DDNS address required. To add this device to your OvrC account:

- (A) Connect the WAP to the Internet
- (B) Log Into OvrC ([www.ovrc.com](http://www.ovrc.com))
- (C) Add the Device (MAC address and Service Tag numbers needed for authentication)



# Contacting Technical Support

Ⓟ (866) 838-5052

Ⓜ techsupport@araknisnetworks.com

## 2-Year Limited Warranty

Araknis Networks® products have a 2-Year Limited Warranty. This warranty includes parts and labor repairs on all components found to be defective in material or workmanship under normal conditions of use. This warranty shall not apply to products that have been abused, modified, or disassembled. Products to be repaired under this warranty must be returned to SnapAV or a designated service center with prior notification and an assigned return authorization (RA) number.



© 2015 Araknis Networks®

150112-1601