



# Installation Instructions

## Model SB-TS46 Tabletop Stand

For 46- and 55-inch series models

### Tabletop Stand Installation

(Note, the Tabletop Stand is an optional accessory. To order, contact your Authorized SunBriteTV Dealer or SunBriteTV customer service.)

Figure 1



Tabletop Stand Mounting Holes on TV



**WARNING:** To prevent personal injury and/or damage to the TV or personal property, use at least two strong people to install or move the TV.

Tools Needed: Phillips screwdriver

#### Notes:

- a. Do not attach the Tabletop Stand if you plan to install the TV on a wall mount or ceiling mount.
- b. The Tabletop Stand can be installed either before or after the detachable speaker module is installed. For purpose of demonstration, we are installing the Tabletop Stand without the speaker module.

For demonstration purposes, this manual is showing how to install the right-half of the Tabletop Stand. Because you will be working from the back of the TV, the Tabletop Stand will appear on the left.

1. Prepare a flat work surface, free of any debris or items which may scratch the front surface of the TV.

2. Lay the TV face-down on the work surface with the bottom of the unit closest to you

**WARNING: Use at least two people when transporting the TV.**

3. Position the TV so that the bottom edge overhangs the table by about two inches.

4. The TV is shipped with three Tabletop Stand Mounting Screws on the TV, two on the back of the TV, and one on the bottom. Remove the screws to expose Tabletop Stand Mounting Holes (Figure 1). **WARNING: Always replace tabletop mounting screws. Failure to do so will allow water to seep inside your TV. This can cause serious injury and damage your TV.**

5. The Tabletop Stand has adjacent Mounting Holes, two on the back and one on the bottom (Figure 2).

6. Remove the Tabletop Stand Mounting Screws.

7. Place the Tabletop Stand on the TV so that the Tabletop Stand Mounting Holes align with the TV Mounting Holes, and screw in the Tabletop Stand Mounting Screws to attach the Table Mount to the TV. Secure tightly (Figures 3 and 4). See figure 5, 6 and 7 for images of installed Tabletop Stand.

Figure 2

Tabletop Stand

Back Bottom



Tabletop Stand Mounting Holes

Figure 3

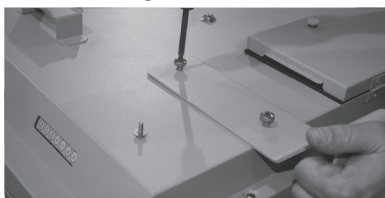


Figure 5

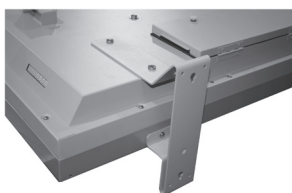


Figure 4

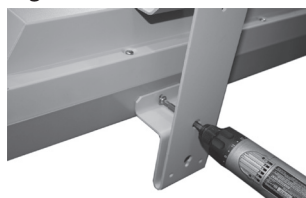


Figure 6



Figure 7



Front and back view of installed Tabletop Stand